



EUROPEAN ANTENNAS

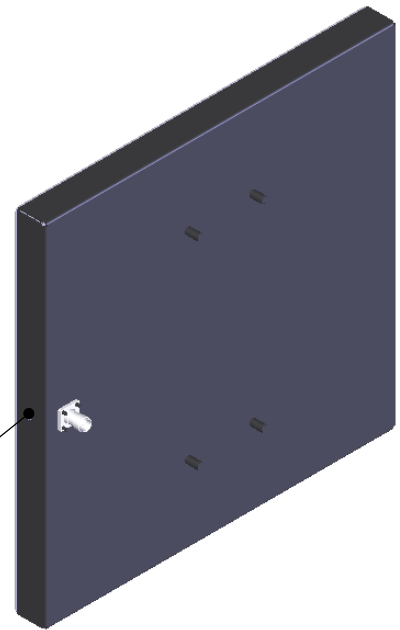
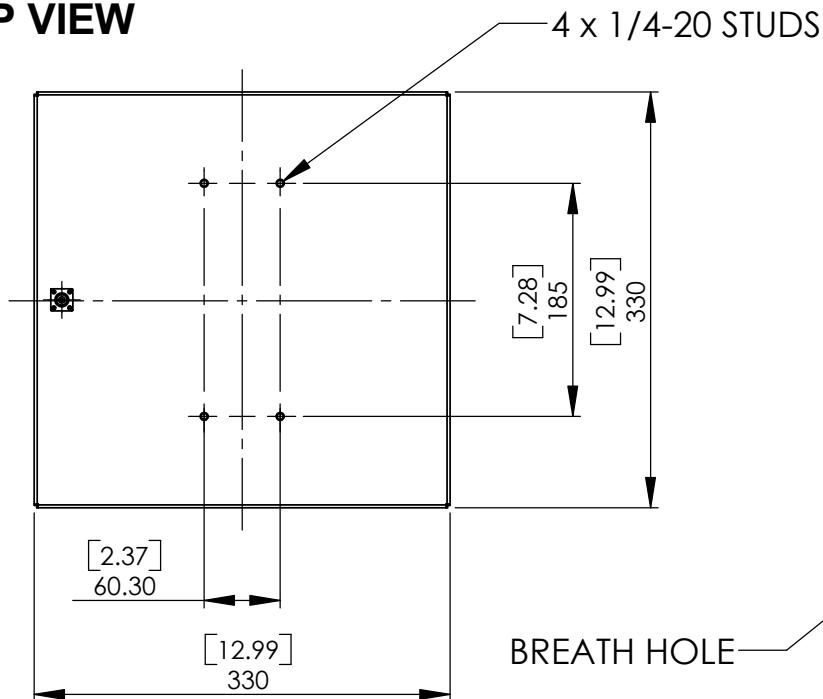
Excellence through design
Creative in concept

FLAT PANEL ANTENNA

MODEL: FPA17-2.2V/1371

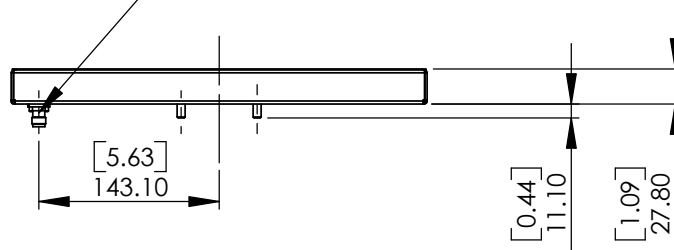
FREQUENCY:	2.1 - 2.3 GHz	GAIN:	16.9 dBi Typical
POLARISATION:	Linear (Vertical)	BEAMWIDTH:	24° (Az.) x 23° (El.)
CROSS POLAR:	>20dB Typical	VSWR:	1.67:1 Max, <1.5 : 1 Typical
POWER RATING:	25 W	FRONT TO BACK:	>30 dB
TEMPERATURE:	-40° to +60°C	MASS:	1 Kg/2.2 lbs
FINISH:	Matt Black	WIND LOADING:	18 Kg/39 lbs @ 100 mph

TOP VIEW



PICTORIAL VIEW

TNC(F) CONNECTOR



REAR VIEW

DIMENSIONS: mm (inches)	H
GA: 1371 - 1	Issued: 251006

EUROPEAN ANTENNAS LTD.

LAMBDA HOUSE, CHEVELEY
NEWMARKET, SUFFOLK, CB8 9RG,
UNITED KINGDOM

Tel: +44 (0)1638 731888
Fax: +44 (0)1638 731999

E-Mail: sales@european-antennas.co.uk
Website: www.european-antennas.co.uk