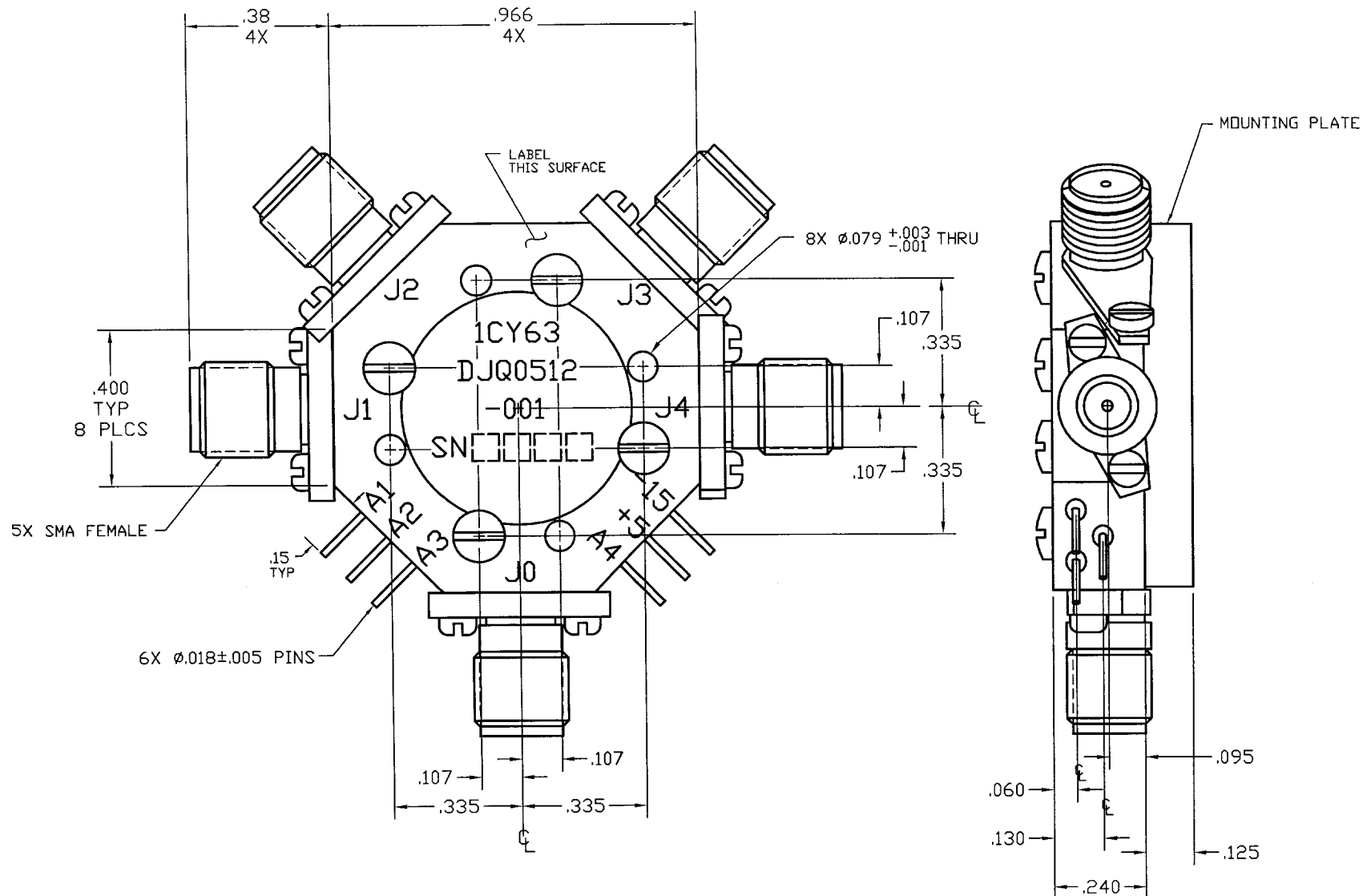


COMPUTER GENERATED DRAWING
MANUAL CHANGES NOT AUTHORIZED


REVISIONS

REV.	DESCRIPTION	DATE	RELEASED BY
NC	INITIAL RELEASE	10-16-95	BM
A	REV PER ECN: 6822, 9830	5-10-98	R.T.S



SPECIFICATIONS:

FREQUENCY:	0.5 - 12.0 GHz		
INSERTION LOSS:	0.5-4.0 GHz	1.5 dB	MAX
	4.0-12.0 GHz	2.1 dB	MAX
VSWR:	2.0:1 MAX		
ISOLATION:	60 dB MIN		
SWITCHING SPEED:	75nSEC		
CONTROL:			
	TTL LOW - INSERTION LOSS		
	TTL HI - ISOLATION		
TEMPERATURE:			
OPERATING:	-54° TO +100° C		
STORAGE:	-54° TO +100° C		
BIAS CONDITIONS:	+5V @ 100 mA MAX		
	-15V @ 50 mA MAX		

ITEM		QTY REQ'D	FSCM NO.	PART OR IDENTIFICATION NO.	NOMENCLATURE OR DESCRIPTION			MATERIAL SPECIFICATION						
PARTS LIST														
UNLESS OTHERWISE SPECIFIED DIMENSIONS ARE IN INCHES TOLERANCES ARE: FRACTIONS DECIMALS ANGLES ± .XX± .02 ± .XXX± .010				CONTRACT NO.		<div> SIERRA MICROWAVE TECHNOLOGY</div> TITLE: OUTLINE FOR DJQ0512-001								
				APPROVALS					DATE					
				DRAWN: J JAMES					10-16-95					
				CHECKED:										
				DESIGN ENG. B MESKOOB					10-16-95					
MATERIAL:				MAT. & PROCESSES		SIZE B			FSCM NO.		DWG NO.		REV	
				Q.A.					1CY63		605-0276-001		A	
603-0004-001		DJQ0512-001												
LIST OF MAT'L		USED ON												
APPLICATION				DO NOT SCALE DRAWING		BRDR SCALE		SHEET		OF				