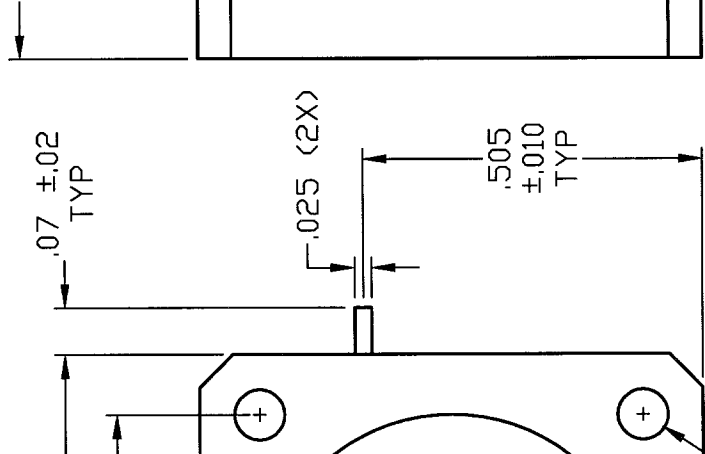
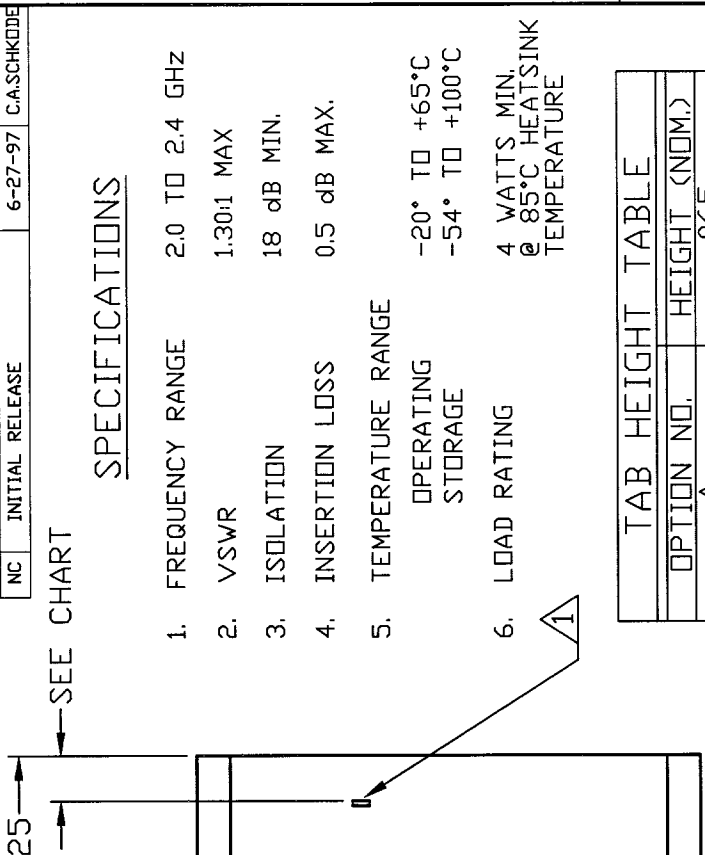


COMPUTER GENERATED DRAWING MANUAL CHANGES NOT AUTHORIZED		REVISIONS	
REV.	DESCRIPTION	DATE	APPROVED
NC	INITIAL RELEASE	6-27-97	C.A.SCHKODE



**SPECIFICATIONS**

1. FREQUENCY RANGE 2.0 TO 2.4 GHz
2. VSWR 1.30:1 MAX
3. ISOLATION 18 dB MIN.
4. INSERTION LOSS 0.5 dB MAX.
5. TEMPERATURE RANGE  
OPERATING -20° TO +65°C  
STORAGE -54° TO +100°C
6. LOAD RATING 4 WATTS MIN.  
@ 85°C HEATSINK TEMPERATURE

**TAB HEIGHT TABLE**

OPTION NO.	HEIGHT (NOM.)
A	.065
B	.075
C	.090
D	.100
E	.120

QTY REQ'D	FSCM NO.	PART OR IDENTIFICATION NO.	NUMERICALS OR DESCRIPTION	MATERIAL SPECIFICATION
			PARTS LIST	
UNLESS OTHERWISE SPECIFIED DIMENSIONS ARE IN INCHES FRACTIONS DECIMALS ANGLES .XXX .01 ± .XXX ± .005		CONTRACT NO.		
MATERIAL		APPROVALS	DATE	
FINISH		DESIGN ENG.		
		MAT. & PROCESSES		
		G.L.		
203-0144-001 SDI2024-X		TITLE: OUTLINE FOR SDI2024-X		
LIST OF MAT'L USED ON		SIZE	FSCM NO.	DWG NO.
		B	1CY63	205-3035-001
APPLICATION		REV		NC
		SHEET OF		

2. CASE: STAINLESS STEEL NICKEL PLATED.  
1. TABS ARE .005±.001 THK. Be Cu, GOLD PLATED.
- NOTES:**

DO NOT SCALE DRAWING