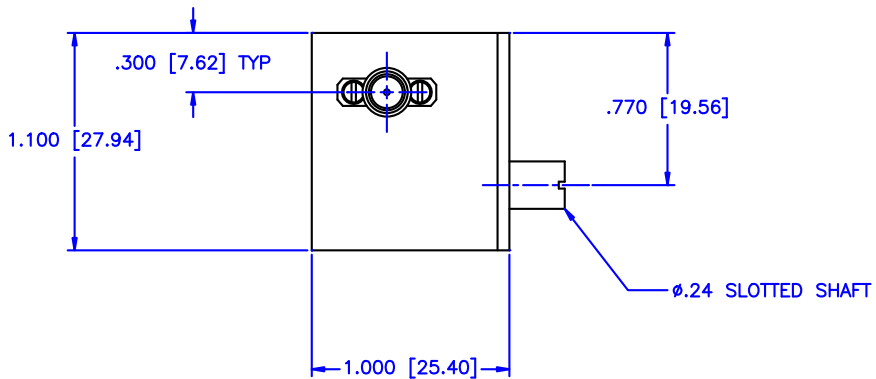
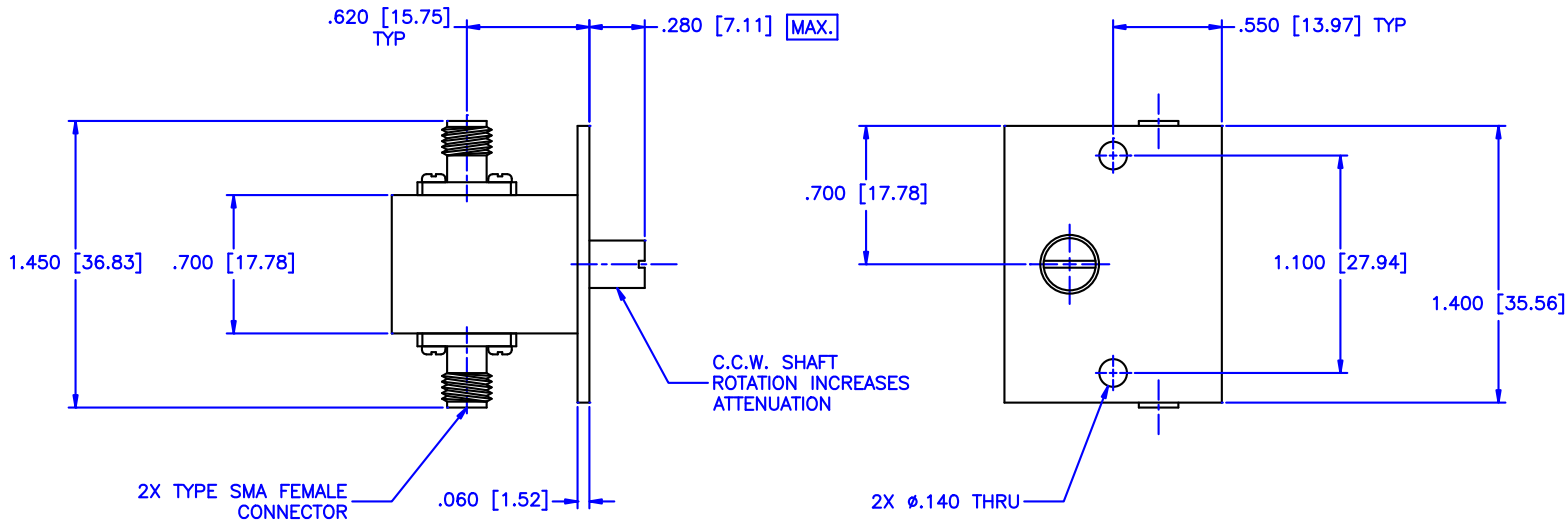


REVISIONS				
ZONE	REV	DESCRIPTION	DATE	APPROVED



Specifications:

- Frequency Range: DC-500 MHz
- Attenuation Range: 0 to 15 dB
- Insertion Loss: 0.5 Max.
- VSWR: 1.80:1
- RF Power Average: 0.5 Watts
- Temperature range: -24°C to +70°C

- * Aluminum body, stainless steel connectors
- * Corrosion resistant 316 stainless steel epoxy coating IAW MIL-F-14072

MATERIAL:			MICROWAVE COMMUNICATIONS LABORATORIES INC. 7255 30TH AVE. N. SAINT PETERSBURG, FL 33710 TEL: (727) 344-6254 FAX: (727) 381-6116 http://WWW.MCLI.COM		SCALE:	N/A
					SHEET:	N/A
UNLESS OTHERWISE SPECIFIED: TOLERANCES IN (INCHES) OR [mm] (MILLIMETERS) FRACTIONS: ± 1/64 DECIMALS: ±.01 ±.005 ANGLE: ±1/2°		DRAWING TITLE:		VARIABLE ATTENUATOR		
DRAWN: Paiboon Luekhamhan		DATE: 05-01-2008		PART NO. CVA30-15		
APPROVED: T. Nguyen		DATE: 05-01-2008		CAGE CODE: OD2L5	SIZE: A	REV: N/A
		PROPRIETARY NOTICE: THE INFORMATION IN THIS DRAWING IS PROPRIETARY AND SHALL NOT BE USED OR DISCLOSED WITHOUT WRITTEN PERMISSION FROM MICROWAVE COMMUNICATIONS LABORATORIES INC. (MCLI)		DWG NO. 83842		
		THIRD ANGLE PROJECTION		DO NOT SCALE THE DRAWING		