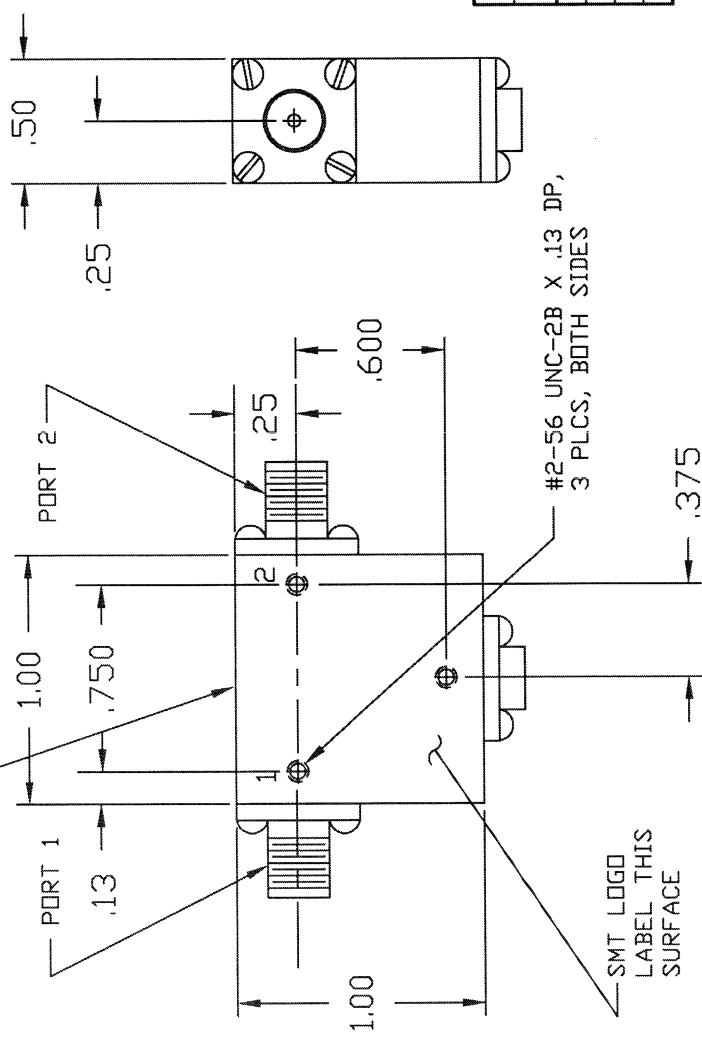


COMPUTER GENERATED DRAWING MANUAL CHANGES NOT AUTHORIZED		REVISIONS	
REV.	DESCRIPTION	DATE	RELEASED BY
NC	INITIAL RELEASE	7-29-91	T.R.
A	REV PER ECN# 2840	8-28-91	T.R.
B	REV PER ECN# 5515	12-30-98	M.T.



SPECIFICATIONS

- FREQUENCY RANGE _____ 1.4 TO 1.6 GHz
- VSWR _____ 1.25:1 MAX
- ISOLATION _____ 20 dB MIN
- INSERTION LOSS _____ 0.4 dB MAX
- TEMPERATURE
 OPERATING _____ -54° TO +85° C
 STORAGE _____ -54° TO +85° C

CONNECTOR ORIENTATION			
DASH NO.	PORT 1	PORT 2	PORT 3
NONE	SMA FEMALE	SMA FEMALE	TERMINATION
-1	SMA MALE	SMA FEMALE	TERMINATION
-2	SMA FEMALE	SMA MALE	TERMINATION
-3	SMA MALE	SMA MALE	TERMINATION

* PART SHOWN IS SMI1416-ND DASH NO.

ITEM	QTY	FRSN	FRCD	FR NO.	PLCT OR IDENTIFICATION NO.	QUANTITY OR DESCRIPTION	VALUABLE SPECIFICATION
PARTS LIST							
UNLABLE LOT NUMBER, REVISED FOR PRODUCTION AND PRODUCTION DATE.				CONTRACT NO.			
FRACTURES INDICATED ANGLE 90, 122 & 135				TITLE:			
MATERIAL				SMT SIERRA MICROWAVE TECHNOLOGY			
FINISH				OUTLINE FOR SMI1416-X			
DATE OF MATL. USED ON				SIZE FSL# NO. DWG NO. 205-1059-001			
APPLICATION				REV B ICY63			
204-0565-001 SMI1416-1, -2				SHEET			
204-0202-001 SMI1416-3				OF			
204-0175-001 SMI1416							

DO NOT SCALE DRAWING