

Low Pass Filter

SXLP-8.4+

50Ω DC to 8.4 MHz

Maximum Ratings

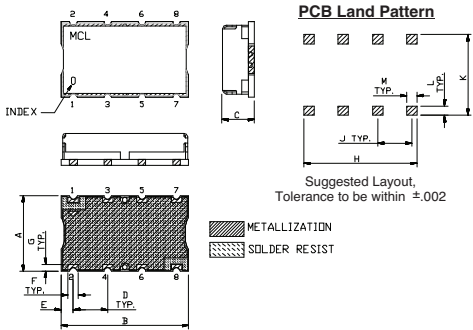
Operating Temperature	-40°C to 85°C
Storage Temperature	-55°C to 100°C
RF Power Input	0.5W Max.

Permanent damage may occur if any of these limits are exceeded.

Pin Connections

INPUT	1
OUTPUT	8
GROUND	2, 3, 4, 5, 6, 7

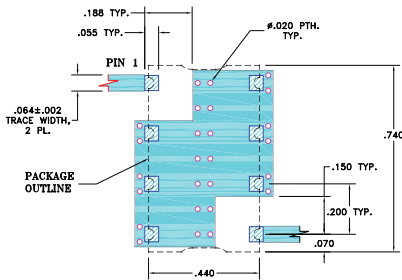
Outline Drawing



Outline Dimensions (inch/mm)

A	B	C	D	E	F	
.44	.74	.27	.200	.07	.060	
11.18	18.80	6.86	5.08	1.78	1.52	
G	H	J	K	L	M	wt.
.040	.660	.200	.470	.055	.060	grams
1.02	16.76	5.08	11.94	1.40	1.52	3.0

Demo Board MCL P/N: TB-368 Suggested PCB Layout (PL-230)



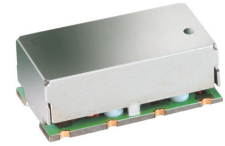
- NOTE:
- TRACE WIDTH IS SHOWN FOR FR4 WITH DIELECTRIC THICKNESS: .025"±.002". COPPER: 1/2 OZ. EACH SIDE. FOR OTHER MATERIALS TRACE WIDTH MAY NEED TO BE MODIFIED.
 - BOTTOM SIDE OF THE PCB IS CONTINUOUS GROUND PLANE.
- DENOTES PCB COPPER LAYOUT WITH SMOBC (SOLDER MASK OVER BARE COPPER)
 - DENOTES COPPER LAND PATTERN FREE OF SOLDER MASK

Features

- high rejection
- sharp cut-off
- shielded package
- aqueous washable
- low cost

Applications

- defense communications
- receivers / transmitters
- harmonic rejection



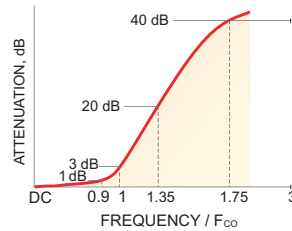
CASE STYLE: HF1139
PRICE: \$ 8.95 ea. QTY (1-9)

+RoHS Compliant
The +Suffix identifies RoHS Compliance. See our web site for RoHS Compliance methodologies and qualifications

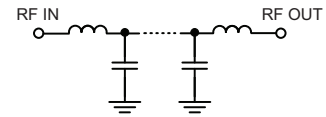
Low Pass Filter Electrical Specifications (T_{AMB} = 25°C)

PASSBAND (MHz)	f _{co} , MHz Nom.	STOPBAND (MHz)		VSWR (:1)	
		(Loss > 20dB)	(Loss > 40dB)	Passband Typ.	Stopband Typ.
DC - 8.4	9.4	11.6 - 13	13 - 400	1.25	18

Typical Frequency Response

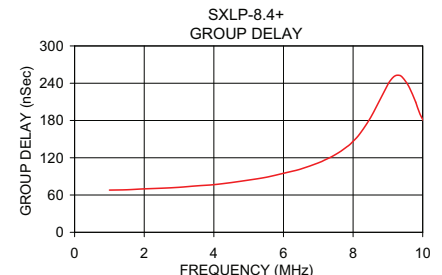
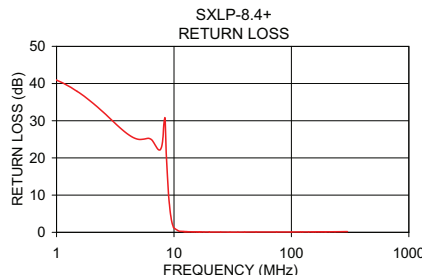
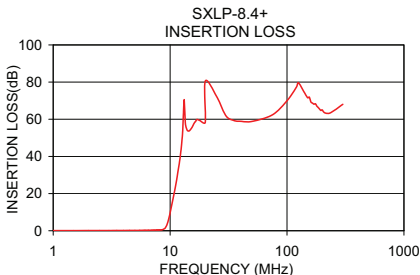


Functional Schematic



Typical Performance Data at 25°C

Frequency (MHz)	Insertion Loss (dB)		Return loss (dB)	Frequency (MHz)	Group Delay (nSec)
	\bar{x}	σ			
0.5	0.08	0.00	43.92	0.5	66.20
1.0	0.08	0.01	40.89	1.5	68.51
5.0	0.18	0.02	24.99	2.0	69.97
8.4	0.48	0.01	30.66	2.5	70.93
9.0	1.17	0.10	10.04	3.0	72.45
9.4	3.25	0.23	4.32	3.5	74.75
10.0	9.71	0.30	1.18	4.0	76.71
11.6	31.17	0.26	0.26	4.5	80.03
13.0	62.31	1.80	0.17	5.0	84.05
15.0	55.18	2.12	0.11	5.5	88.57
20.0	59.65	7.30	0.08	6.2	97.57
50.0	58.73	0.34	0.08	6.5	101.85
75.0	62.37	0.58	0.08	7.0	111.74
100.0	68.95	1.08	0.09	7.2	116.73
120.0	76.07	2.22	0.10	7.6	128.85
150.0	71.23	0.82	0.11	7.7	132.53
200.0	64.48	0.72	0.14	8.0	146.47
235.0	62.91	0.70	0.15	8.4	175.22
300.0	67.91	0.63	0.18	9.4	250.50
330.0	49.96	0.93	0.21	9.6	234.82
400.0	61.70	0.55	0.24	10.0	181.83



For detailed performance specs & shopping online see web site

P.O. Box 350166, Brooklyn, New York 11235-0003 (718) 934-4500 Fax (718) 332-4661 The Design Engineers Search Engine Provides ACTUAL Data Instantly at minicircuits.com

Notes: 1. Performance and quality attributes and conditions not expressly stated in this specification sheet are intended to be excluded and do not form a part of this specification sheet. 2. Electrical specifications and performance data contained herein are based on Mini-Circuits' applicable established test performance criteria and measurement instructions. 3. The parts covered by this specification sheet are subject to Mini-Circuits standard limited warranty and terms and conditions (collectively, "Standard Terms"); Purchasers of this part are entitled to the rights and benefits contained therein. For a full statement of the Standard Terms and the exclusive rights and remedies thereunder, please visit Mini-Circuits' website at www.minicircuits.com/MCLStore/terms.jsp.

REV. OR
M112220
EDR-8648/1U
SXLP-8.4+
URJ/RAV
121015
Page 1 of 1