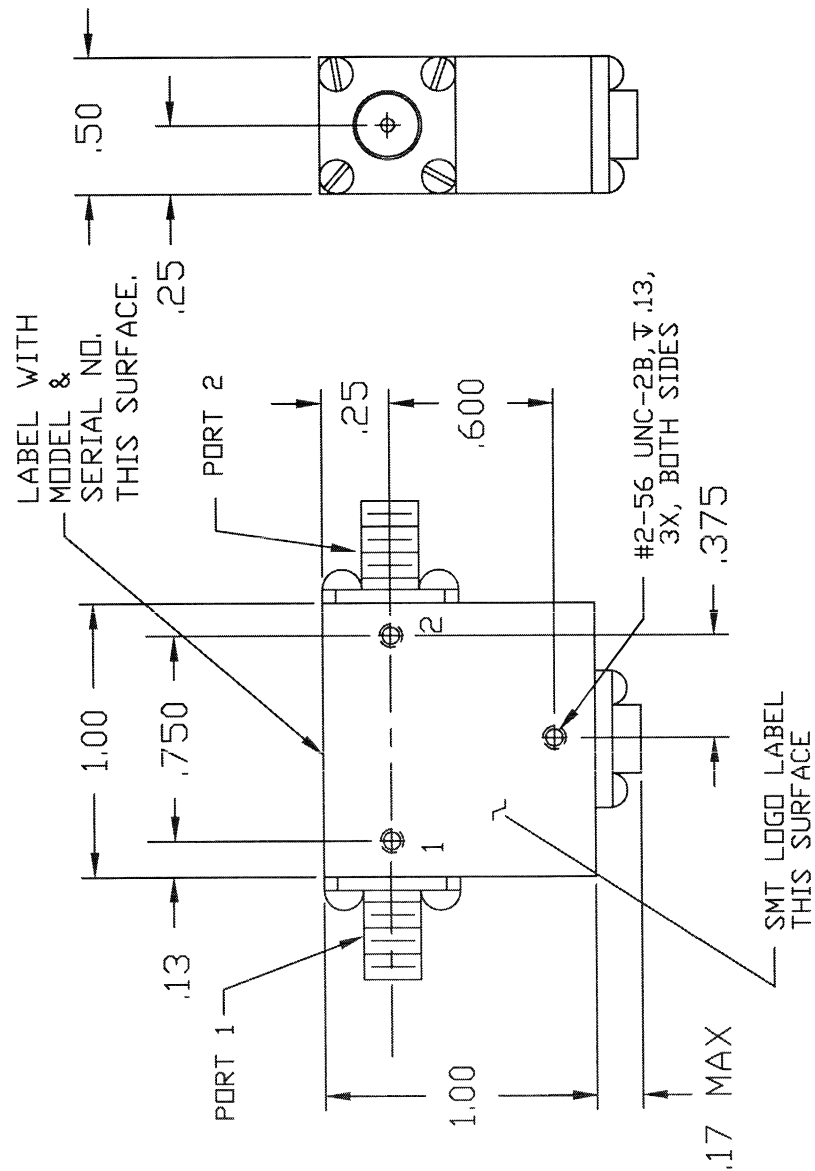


COMPUTER GENERATED DRAWING
MANUAL CHANGES NOT AUTHORIZED

REVISIONS	
REV.	DESCRIPTION
NC	INITIAL RELEASE
A	REV PER BLANKET ECN: 5515

DATE	APPROVED
10-23-89	T.R.



SPECIFICATIONS

- FREQUENCY RANGE: 3.4 TO 4.2 GHz
- VSWR: 1.25:1 MAX
- ISOLATION: 20 dB MIN
- INSERTION LOSS: 0.4 dB MAX
- TEMPERATURE OPERATING: -20°C TO +65°C
STORAGE: -55°C TO +100°C

CONNECTOR ORIENTATION		
DASH NO.	PORT 1	PORT 2
NONE	SMA FEMALE	SMA FEMALE
-1	SMA MALE	SMA FEMALE
-2	SMA FEMALE	SMA MALE
-3	SMA MALE	SMA MALE

PART SHOWN IS SMI3442 - NO DASH NO.

ITEM	QTY	PSOM	PART OR	REVISIONS	MATERIAL
	REQ'D	NO.	IDENTIFICATION NO.	OR DESCRIPTION	SPECIFICATION
PARTS LIST					
CONTRACT NO.					
APPROVALS					
DATE					
DRAWN BY: B. ALEXANDER					
10-6-89					
CHECKED BY: T. RODRIGUEZ					
10-22-89					
MATERIAL					
SIERRA MICROWAVE TECHNOLOGY					
TITLE:					
OUTLINE FOR SMI3442-X					
SIZE					
PSOM NO.					
DWG NO.					
REV					
A					
DO NOT SCALE DRAWING					
APPLICATION					

204-0358-001	SMI3442-3	
204-0197-001	SMI3442-1, -2	
204-0144-001	SMI3442	
LIST OF MAT'L.	USED ON	