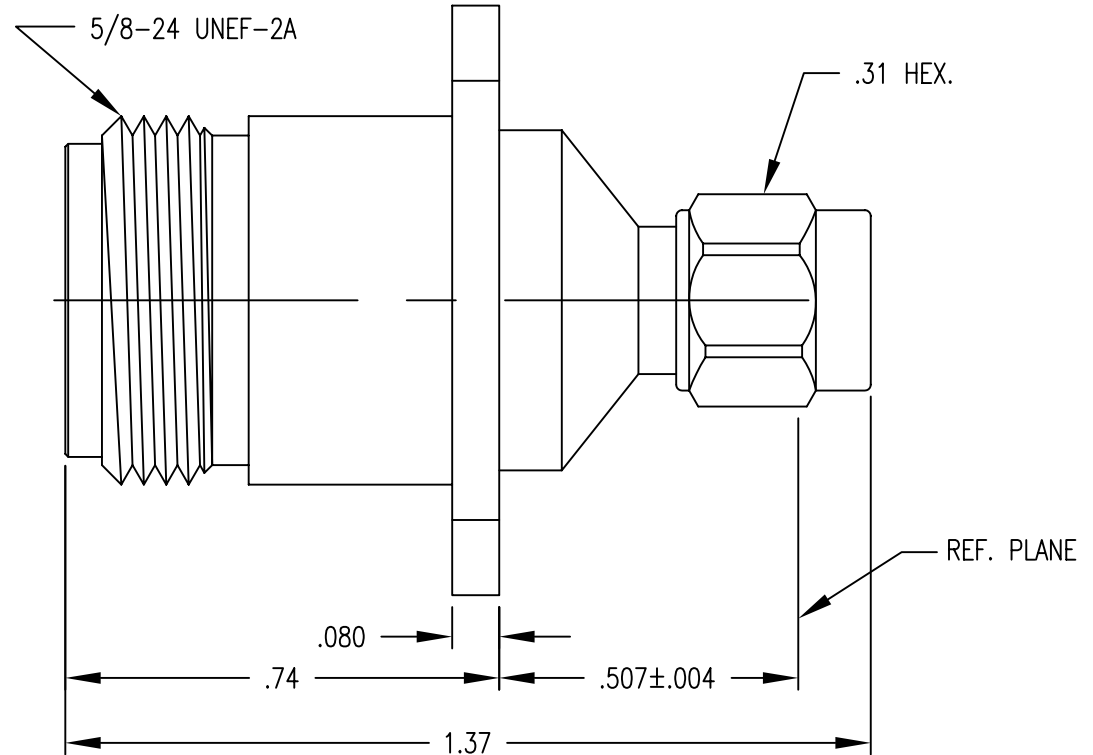
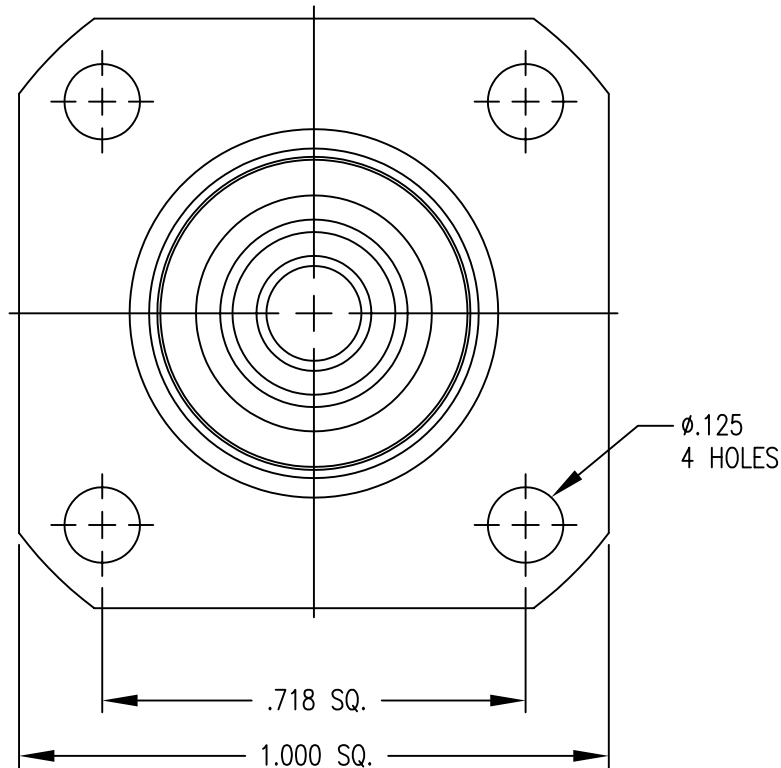


- 1.0 PERFORMANCE
- 1.1 FREQUENCY RANGE: DC-18 GHz
- 1.1 VSWR: (1.05, 3 GHz), (1.15, 12.4 GHz), (1.40, 18 GHz)
- 1.2 VOLTAGE RANGE: 500V RMS (sea level)
- 1.3 NOMINAL IMPEDANCE: 50 OHMS
- 1.4 DWV: 1500V RMS @ 60Hz (sea level)
- 1.5 TEMPERATURE RANGE: -65°C TO +165°C
- 2.0 MATERIALS
- 2.1 DIELECTRIC: TEFLON, ASTM-D-1710
- 2.2 CENTER CONTACT: BERYLLIUM COPPER, ASTM-B-16

- 2.3 LOCKING RING: BERYLLIUM COPPER, ASTM-B-194
- 2.4 ALL OTHER METAL PARTS: BRASS, ASTM-B-16
- 2.5 GASKET: SILICON RUBBER, ZZ-R-765, GR. 50, RED
- 3.0 FINISHES
- 3.1 CENTER CONTACT: GOLD PLATED
- 3.2 ALL OTHER METAL PARTS: NICKEL PLATED
- 4.0 MECHANICAL
- 4.1 INTERFACES PER MIL-STD-348

DWG NO. OL-0910-69-1	REV. C
-------------------------	-----------




C	VSWR: (1.10, 3 GHz), (1.17, 6 GHz), (1.32, 11 GHz)	5/10/05	FSH	FSH
B	ADD VSWR PERFORMANCE	2/25/03	FSH	FSH
A	ORIGINAL	9/19/02	 	
Rev.	Revisions	Date	Dwn.	Appd.
	RECOM. STOCK SIZE	FT/M PCS	QTY REQD	

PROPRIETARY
THIS DRAWING CONTAINS CONFIDENTIAL INFORMATION PROPRIETARY TO SAN*TRON INC. IT MUST NOT BE REPRODUCED OR DISCLOSED TO OTHERS OR USED IN ANY OTHER WAY, IN WHOLE OR PART EXCEPT AS AUTHORIZED IN WRITING BY SAN*TRON INCORPORATED.

REMOVE ALL BURRS AND SHARP EDGES .005 MAX.
UNLESS OTHERWISE STATED ALL DIMENSIONS ARE IN INCHES AND APPLY AFTER PLATING

UNSPECIFIED TOL.	DWN	JMB	9/19/02
.XX ± .020	CHKD	SJS	12/02/02
.XXX ± .005	APPR	FSH	9/19/02
ANG. ± 1/2°			

CONCENTRICITY .004 TIR
ALL MACHINED SURFACES \checkmark 63



SAN • TRON, INC.

4 NEWBURYPORT TPK, IPSWICH, MA 01938

TITLE ADAPTER, STRAIGHT, PANEL MOUNT, SMA (M) TO N (F)

MATERIAL: SEE NOTE 2.0	FINISH: SEE NOTE 3.0
FSCM NO. 50896	DWG NO. OL-0910-69-1
SCALE 4:1	REV. C