

# Low Pass Filter

## VLFX-300

50Ω DC to 300 MHz (40 dB Isolation up to 20 GHz)

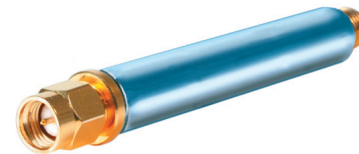
### Maximum Ratings

Operating Temperature	-55°C to 100°C
Storage Temperature	-55°C to 100°C
RF Power Input*	10W max. at 25°C

\*Passband rating, derate linearly to 3.5W at 100°C ambient. Permanent damage may occur if any of these limits are exceeded.

### Features

- very good isolation, 40 dB up to 20 GHz
- 21 sections
- excellent power handling, 10W
- temperature stable LTCC internal structure
- re-entry frequency > 20 GHz
- rugged unibody construction
- protected by US patent 6,943,646



CASE STYLE: FF1118

Connectors	Model	Price	Qty.
SMA	VLFX-300	\$39.95 ea.	(1-9)

**+RoHS Compliant**

The +Suffix identifies RoHS Compliance. See our web site for RoHS Compliance methodologies and qualifications

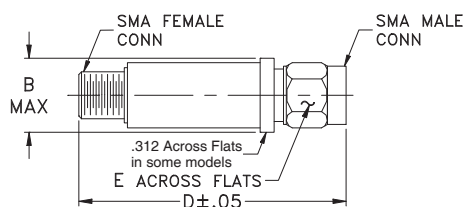
### Applications

- harmonic rejection
- transmitters/receivers
- lab use
- test instrumentation

### Low Pass Filter Electrical Specifications @ 25°C

MODEL NO.	PASSBAND (MHz) (Loss < 1.2dB Max.)	Fco, MHz Nom (Loss 3 dB Typ)	STOPBAND (MHz) (Loss, dB)		VSWR (:1)		NO. OF SECTIONS
			F20 Min.	F40 Typ.	Stopband Typ.	Passband Typ.	
VLFX-300	DC-300	450	580	650-20000	10	1.15	21

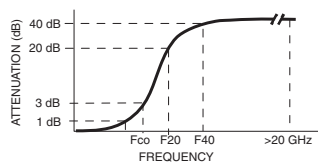
### Outline Drawing



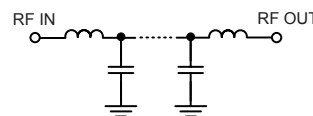
### Outline Dimensions (inch mm)

B	D	E	wt. grams
.410	2.67	.312	17.0
10.41	67.82	7.92	

### Typical Frequency Response

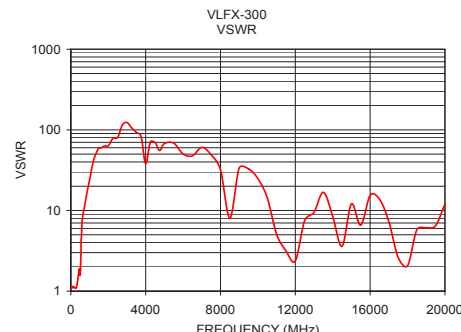
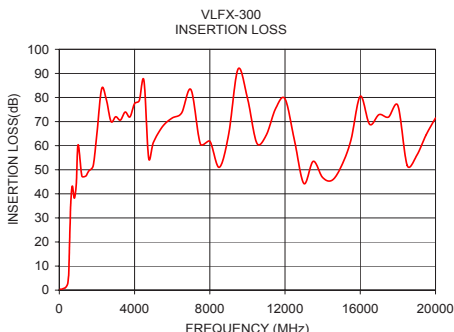


### Functional Schematic



### Typical Performance Data @ 25°C

Frequency (MHz)	Insertion Loss (dB)	VSWR (:1)
50	0.38	1.16
100	0.39	1.09
200	0.64	1.11
300	0.95	1.11
350	1.21	1.28
400	1.79	1.58
450	2.85	1.88
500	6.46	1.56
580	29.41	5.57
650	41.12	8.93
800	38.18	13.79
900	44.02	18.40
1000	60.37	23.84
2500	79.10	80.35
5000	61.32	67.53
7500	60.77	49.08
10000	79.72	24.86
12500	62.16	7.48
15000	51.60	12.04
20000	71.48	12.03



For detailed performance specs & shopping online see web site

P.O. Box 350166, Brooklyn, New York 11235-0003 (718) 934-4500 Fax (718) 332-4661 The Design Engineers Search Engine

Provides ACTUAL Data Instantly at [minicircuits.com](http://minicircuits.com)

Notes: 1. Performance and quality attributes and conditions not expressly stated in this specification sheet are intended to be excluded and do not form a part of this specification sheet. 2. Electrical specifications and performance data contained herein are based on Mini-Circuit's applicable established test performance criteria and measurement instructions. 3. The parts covered by this specification sheet are subject to Mini-Circuits standard limited warranty and terms and conditions (collectively, "Standard Terms"); Purchasers of this part are entitled to the rights and benefits contained therein. For a full statement of the Standard Terms and the exclusive rights and remedies thereunder, please visit Mini-Circuits' website at [www.minicircuits.com/MCLStore/terms.jsp](http://www.minicircuits.com/MCLStore/terms.jsp).