

2.92/F - 2.92/F BULKHEAD ADAPTER 40 GHZ

SM3226

SPECIFICATIONS

ELECTRICAL

50 OHMS
VSWR 1.25:1 MAX @ 40 GHZ
FREQUENCY: 0-40 GHZ
MODE FREE TO 46 GHZ

MECHANICAL

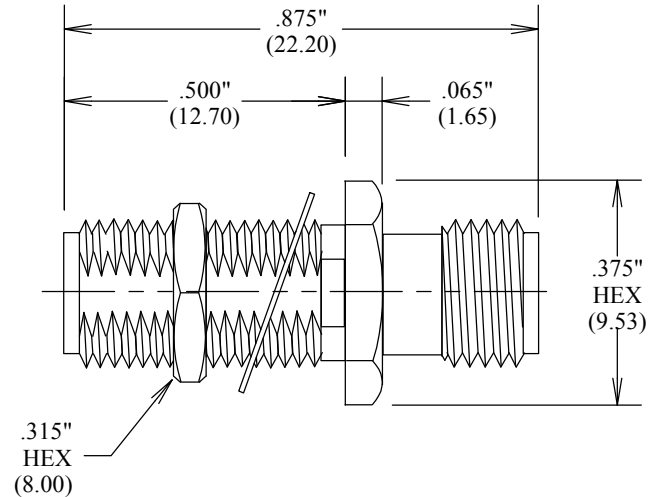
500 CYCLES MIN
4.0 IN-OUNCES MIN CONTACT TORQUE
8-10 IN LBS COUNTING NUT MATING TORQUE

MATERIALS

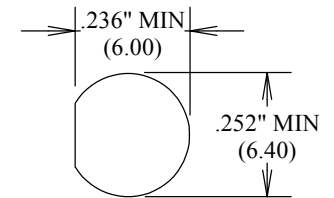
BODY: Au PLATED STAINLESS STEEL
CONTACTS: BeCu
PLATING CONTACTS: Au PER MIL-G-45204
INSULATOR: TEFLON

ENVIRONMENTAL

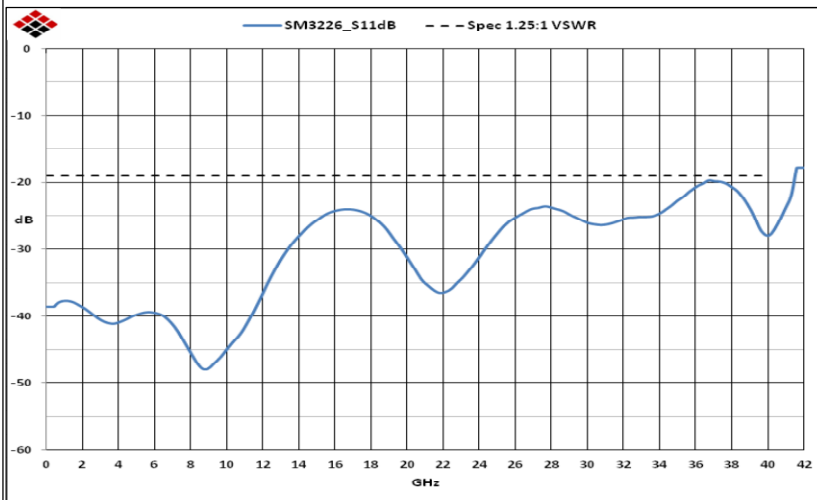
-55°C TO +100°C
ROHS COMPLIANT



RECOMMENDED PANEL CUTOUT



LOCKWASHER & GASKET SUPPLIED



ALL DIMENSIONS IN inches(MM) Typical

FAIRVIEW MICROWAVE INC.

ALLEN, TX 75013 WWW.FAIRVIEWMICROWAVE.COM

TITLE

2.92/F - 2.92/F BULKHEAD ADAPTER 40 GHZ

SIZE

A

CAGE CODE

3FKR5

DWG NO

SM3226

REV

A

SCALE

SHEET