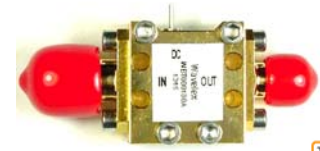


Key Features

- Wide band, 20 MHz ~ 13.8 GHz
- Low insertion loss, 0.30 dB typ.
- 1.22:1 VSWR
- 220 mA DC current handling
- 2 W CW power handling
- Precision machined housing
- RoHS compliant

Applications

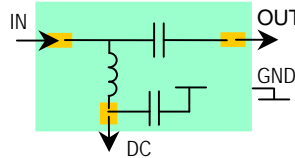
- Up to 13.8 GHz Band
- Satellite communications
- Broadcast
- RF bench test
- Mobile base station applications



Absolute Maximum Ratings

Input Power, CW	33 dBm
DC Current	220 mA
Storage Temperature	-40°C to +85°C

Functional Block Diagram



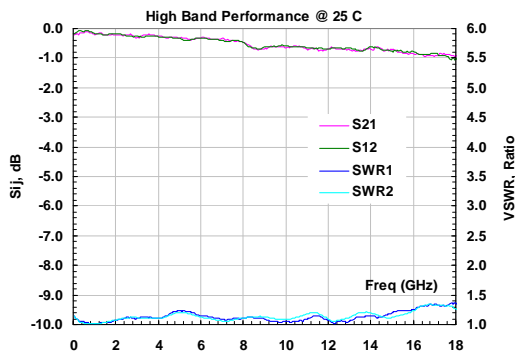
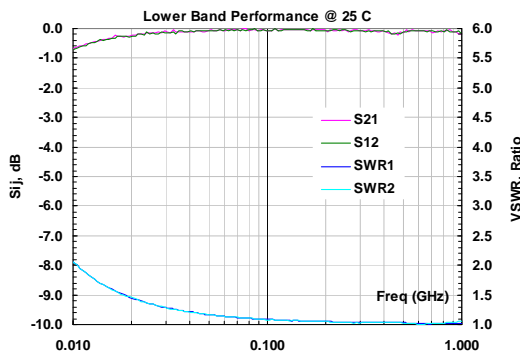
Ordering Information

Model	WBT000120A
-------	------------

Specifications (Tested at +25°C)

Item	Symbol	Test Constraints	Min	Typ	Max	Unit
Frequency Range	BW	50 Ohm Impedance	0.02		13.8	GHz
Insertion Loss	S ₂₁	0.02 – 13.8 GHz		0.3	0.8	dB
VSWR	SWR _i	0.02 – 13.8 GHz		1.22:1	1.4:1	Ratio
Isolation, RF to DC port		0.02 – 13.8 GHz		40		dB
Maximum Power Handling	P _{MAX}	0.02 – 13.8 GHz, CW			33	dBm
Maximum DC Voltage	V _{DCMAX}				50	V
Maximum DC Current	I _{DCMAX}				220	mA
Operating Temp	T _o		-40		+85	°C

Typical Performance



Outline

Units: INCH
[mm]

