

Passband 1: 450 to 960 MHz

Diplexer (BP/HP)

Passband 1 Isolation: 90 dB

Passband 2: 1300 to 4000 MHz

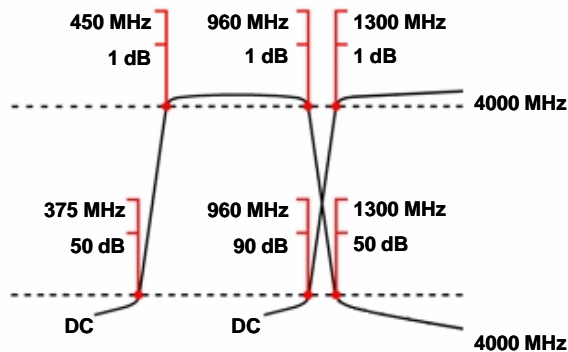
WDJ16+9-450-960/1300-4000-90/50

Passband 2 Isolation: 50 dB

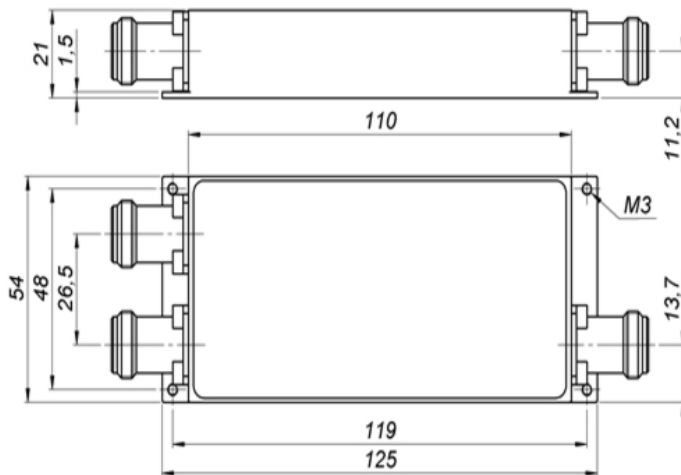
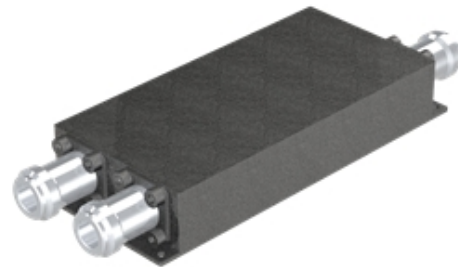
Specifications

	Band 1 (Bandpass)	Band 2 (Highpass)
Passbands:	450 to 960 MHz	1300 to 4000 MHz
Passband Insertion Loss:	1 dB max.	1 dB max.
Passband Return Loss:	15 dB min.	15 dB min.
Stopbands:	DC-375 & 1300-4000 MHz	DC-960 MHz
Stopband Attenuation:	50 & 50 dB min.	90 dB min.
Operating Temperature:	15 °C to 45 °C	
Power Handling:	max. 100 W CW into a 2:1 VSWR (Please see our warranty in this regard)	
Dimensions (L x W x H):	110 x 54 x 21 mm (plus connectors and flanges)	
Approx. Weight:	0.4 kg	
Mounting Provision:	7.5 mm flanges on both ends	
Connector Common:	- Please choose -	
Connector Band 1:	- Please choose -	
Connector Band 2:	- Please choose -	

Typical Performance



16+9 Section LC Design



©2015 Wainwright Instruments. All rights reserved.

Euro Prices

(USD Prices will be quoted for US-based customers only)

1 - 4 pcs:	€ 1825
5 - 9 pcs:	€ 1643
10 - 24 pcs:	€ 1478

Delivery Terms

FCA Andechs (free carrier) according to **Incoterms 2010**
 In Deutschland liefern wir frachtfrei gemäß CPT **Incoterms 2010** (unversichert).
 Regarding payment terms and warranty see [Terms and Conditions](#).
Delivery time: normally 3 to 4 weeks - depending on quantity ordered and on our work load.

Customer is responsible for observing all applicable export laws in regard to filter application and location of end user



Wainwright Instruments GmbH
 www.wainwright-filters.com

Tel: +49 8152 918230
 Fax: +49 8152 918255
 info@wainwright-filters.com