



# EUROPEAN ANTENNAS

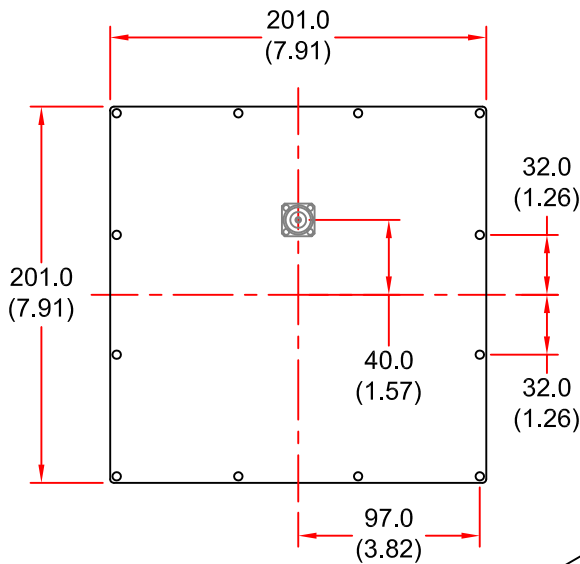
Excellence through design  
Creative in concept



## FLAT PANEL ANTENNA

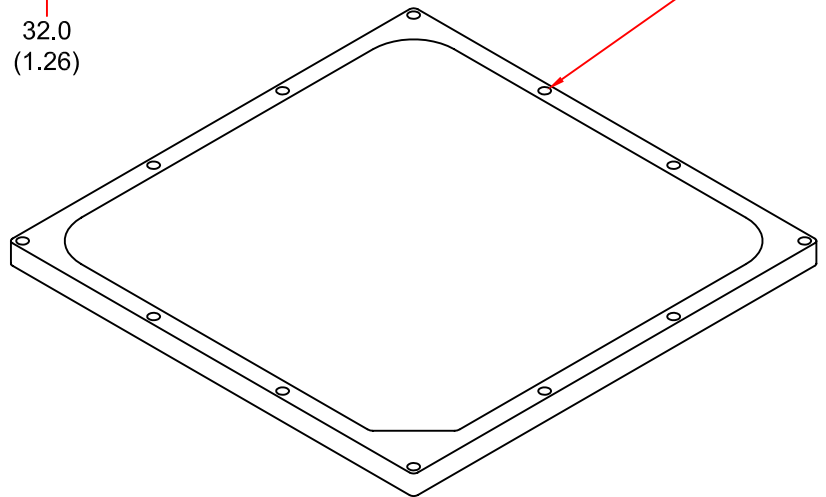
MODEL: FPA18-48R/751

FREQUENCY:	4.6 - 5.0 GHz	GAIN:	17 dBiC Nominal
POLARISATION:	Right Hand Circular	BEAMWIDTH:	20° (Azimuth) x 20° (Elevation)
AXIAL RATIO:	3 dB Typical	VSWR:	1.5:1 Typical
POWER RATING:	10 W	FRONT TO BACK:	35 dB Minimum
TEMPERATURE:	-20°C to +50°C	MASS:	680 g / 1.49 lbs
RADOME:	Glass Fibre / Gloss White	WIND LOADING:	14.42 Kg / 6.55 lbs @ 100 mph

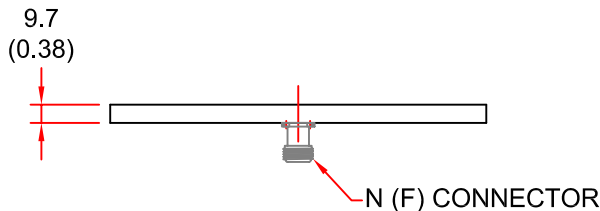


REAR VIEW

MOUNTING VIA 12 OFF  
Ø4.5 HOLES  
OR 2 x 'U'-BOLTS FOR  
50mm TUBE  
(INCLUDED)



ISOMETRIC VIEW



SIDE VIEW

DIMENSIONS: mm (inches)

GA 751-1 Issued 130900

EUROPEAN ANTENNAS LTD.

LAMBDA HOUSE, CHEVELEY,  
NEWMARKET, SUFFOLK, CB8 9RG,  
UNITED KINGDOM.

TEL: +44 (0)1638 731888

FAX: +44 (0)1638 731999

E-Mail: sales@european-antennas.co.uk

Website: www.european-antennas.co.uk