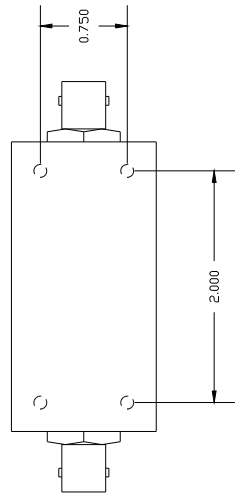
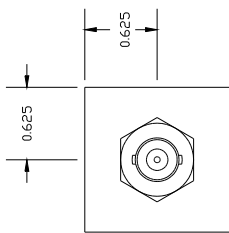
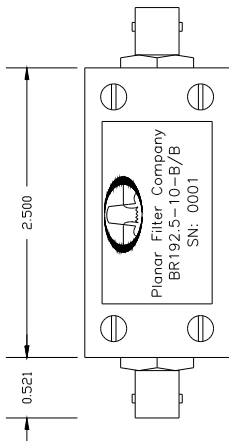
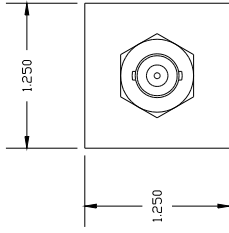


REVISIONS		
ZONE	REV.	DATE
	-	8/18/99

ORIGINAL RELEASE

SPECIFICATIONS:

- BANDREJECT FILTER
- CENTER OF NOTCH: 192.5 MHz
- PASSBAND: 30 TO 1000 MHz
- 3dB BANDWIDTH: 9 MHz
- REJECTION: @ 188.5 MHz <-30dB
- REJECTION: @ 196.5 MHz <-30dB
- PASSBAND RIPPLE: 0.25 dB
- INPUT VSWR: 2.1:1
- INPUT/OUTPUT IMPEDANCE: 50 OHMS
- INSERTION LOSS: <1.5 dB
- INPUT POWER: 5 WATTS
- SIZE: 2.500(L) x 1.250(W) x 1.250(H) EXCLUDING CONNECTORS
- WEIGHT: 3.7 OZ. TYP.



ALL DIMENSIONS ARE IN INCHES
 TOLERANCES:
 X.XX ±0.010
 X.XXX ±0.005

PART NO.		TITLE	
APPROVALS	DATE	PLANAR FILTER COMPANY 7311G GROVE RD., FREDERICK, MARYLAND	
DRAWN F. HOYDS	9/21/99	OUTLINE DRAWING BR192.5-10-B/B	
CHECKED		SIZE A	FSCM NO. OZZX8
ISSUED		DWG NO. HOUSING	REV. -
		SCALE N/A	SHEET 1 OF 1

NOTE: THE ABOVE SPECIFICATIONS ARE SUBJECT TO CHANGE OR REVISION