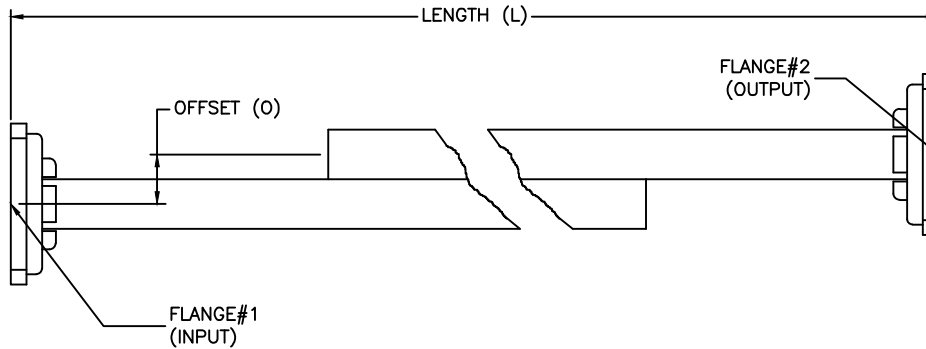


REVISIONS				
ZONE	REV	DESCRIPTION	DATE	APPROVED

SPECIFICATIONS

Electrical
 Std. Attenuation values: 10, 20, 30, 40, 50dB
 Nominal Attenuation accuracy: +/- 0.50dB (+/- 0.75dB for WR42, WR34, WR28)
 Freq. Sensitivity: +/- 0.60 dB (+/- 0.75dB for WR42, WR34, WR28)

Mechanical
 Size: See Tables
 Std. Body: Aluminum
 Finish: Hi-Temp Black



PART NUMBER (WR)	FREQ. (GHz)	VSWR	WATTS	LENGTH	OFFSET
AWP430-M-dB-FF	1.7-2.6	1.15:1	1,200	54.0"	2.230"
AWP340-M-dB-FF	2.2-3.3	1.15:1	1,200	42"	1.780"
AWP284-M-dB-FF	2.6-3.95	1.15:1	1,200	33"	1.420"
AWP229-M-dB-FF	3.3-4.9	1.15:1	1,000	27"	1.209"
AWP187-M-dB-FF	3.95-5.85	1.15:1	750	24"	0.936"
AWP159-M-dB-FF	4.9-7.05	1.15:1	625	24"	0.859"
AWP137-M-dB-FF	5.85-8.2	1.15:1	500	22.5"	0.686"
AWP112-M-dB-FF	7.05-10	1.15:1	425	16"	0.561"
AWP90-M-dB-FF	8.2-12.4	1.15:1	225	14.5"	0.450"
AWP75-M-dB-FF	10-15	1.15:1	200	13.5"	0.425"
AWP62-M-dB-FF	12.4-18	1.15:1	100	11.5"	0.351"
AWP51-M-dB-FF	15-22	1.15:1	100	11.5"	0.295"
AWP42-M-dB-FF	18-26.5	1.15:1	100	9.5"	0.210"
AWP34-M-dB-FF	22-33	1.15:1	75	9.5"	0.210"
AWP28-M-dB-FF	26.5-40	1.15:1	75	9"	0.180"

ORDERING INFORMATION/PART NUMBERS: AWP430-A-50-2-2

AWP = HIGH POWER SERIES
 430 = WR430 (From WR28 to WR430)

M = MATERIAL (A,B)
 A = ALUMINUM
 B = BRASS

FLANGE#2: 1=CPRG, 2=CPRF, 6=COVER, 7=CHOKE, 8=COVER GROOVE
 FLANGE#1: 1=CPRG, 2=CPRF, 6=COVER, 7=CHOKE, 8=COVER GROOVE

dB = ATTENUATION VALUES (STD)
 STD: 10dB, 20dB, 30dB, 40dB, 50dB

MATERIAL:			MICROWAVE COMMUNICATIONS LABORATORIES INC. 7255 30TH AVE. N. SAINT PETERSBURG, FL 33710 TEL: (727) 344-6254 FAX: (727) 381-6116 http://www.MCLI.COM		SCALE: N/A
UNLESS OTHERWISE SPECIFIED: TOLERANCES IN (INCHES) OR [mm] (MILLIMETERS) FRACTIONS: ± 1/64 DECIMALS: ±.01 ±.005 ANGLE: ±1/2°			DRAWING TITLE: WAVEGUIDE ATTENUATOR, HIGH POWER FIXED PRECISION		SHEET: N/A
DRAWN: Paiboon Luekhamhan		DATE: 02-11-2011		PART NO.: AWP28-M-dB-FF to AWP430-M-dB-FF	
APPROVED: T. Nguyen		DATE: 02-11-2011		CAGE CODE: OD2L5	SIZE: C
				REV: N/A	DWG NO.: 85501
DO NOT SCALE THE DRAWING					