

Passband 1: DC to 2168 MHz

Diplexer (LP/HP)

Passband 1 Isolation: 30 dB

Passband 2: 3420 to 8000 MHz

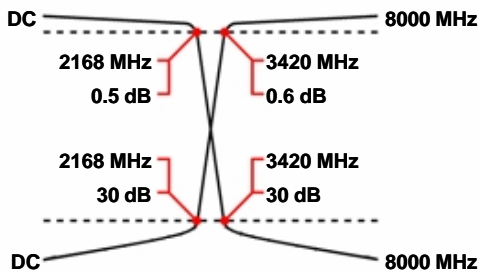
WDK5+4-DC-2168/3420-8000-30

Passband 2 Isolation: 30 dB

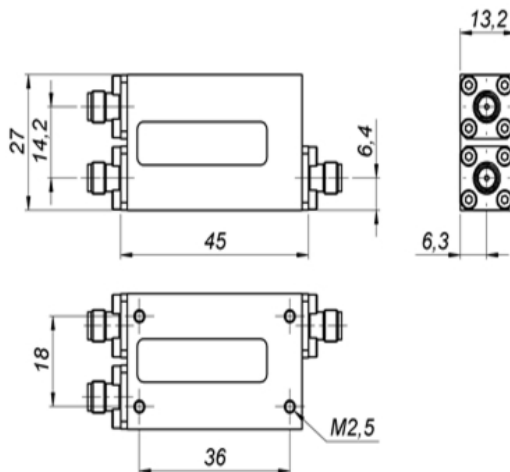
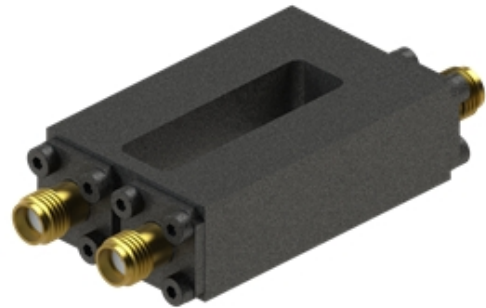
Specifications

	Band 1 (Lowpass)	Band 2 (Highpass)
Passbands:	DC to 2168 MHz	3420 to 8000 MHz
Passband Insertion Loss:	0.5 dB max.	0.6 dB max.
Passband Return Loss:	15 dB min.	15 dB min.
Stopbands:	3420-8000 MHz	DC-2168 MHz
Stopband Attenuation:	30 dB min.	30 dB min.
Operating Temperature:	15 °C to 45 °C	
Power Handling:	max. 10 W CW into a 2:1 VSWR (Please see our <u>warranty</u> in this regard)	
Dimensions (L x W x H):	45 x 27 x 13.2 mm (plus connectors)	
Approx. Weight:	0.07 kg	
Mounting Provision:	4 x M2.5 threaded holes in base	
Connector Common:	- Please choose -	
Connector Band 1:	- Please choose -	
Connector Band 2:	- Please choose -	

Typical Performance



5+4 Section LC Design



©2015 Wainwright Instruments. All rights reserved.

Euro Prices

(USD Prices will be quoted for US-based customers only)

1 - 4 pcs:	€ 1180
5 - 9 pcs:	€ 1062
10 - 24 pcs:	€ 956

Delivery Terms

FCA Andechs (free carrier) according to **Incoterms 2010**
 In Deutschland liefern wir frachtfrei gemäß CPT **Incoterms 2010** (unversichert).
 Regarding payment terms and warranty see [Terms and Conditions](#).
Delivery time: normally 3 to 4 weeks - depending on quantity ordered and on our work load.

Customer is responsible for observing all applicable export laws in regard to filter application and location of end user



Wainwright Instruments GmbH
 www.wainwright-filters.com

Tel: +49 8152 918230
 Fax: +49 8152 918255
 info@wainwright-filters.com