

- 1.0 PERFORMANCE
 1.1 FREQ RANGE: DC - 18 GHz
 1.2 NOMINAL IMPEDANCE: 50 OHMS
 1.3 DWV: 1500Vrms, 60 Hz
 1.4 TEMP RANGE: -65/+165°C
 1.5 PIM < -158 dBc (M1)

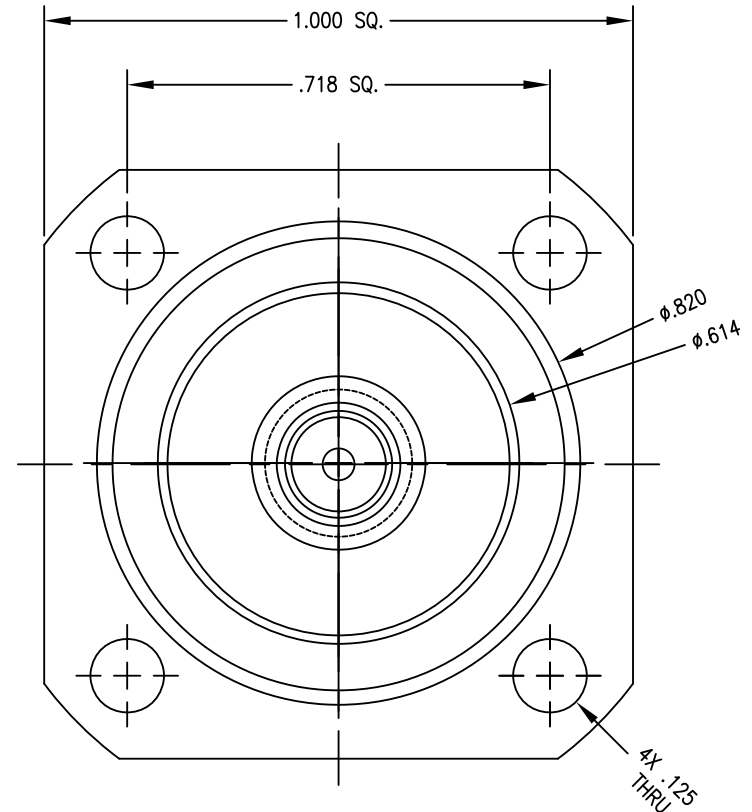
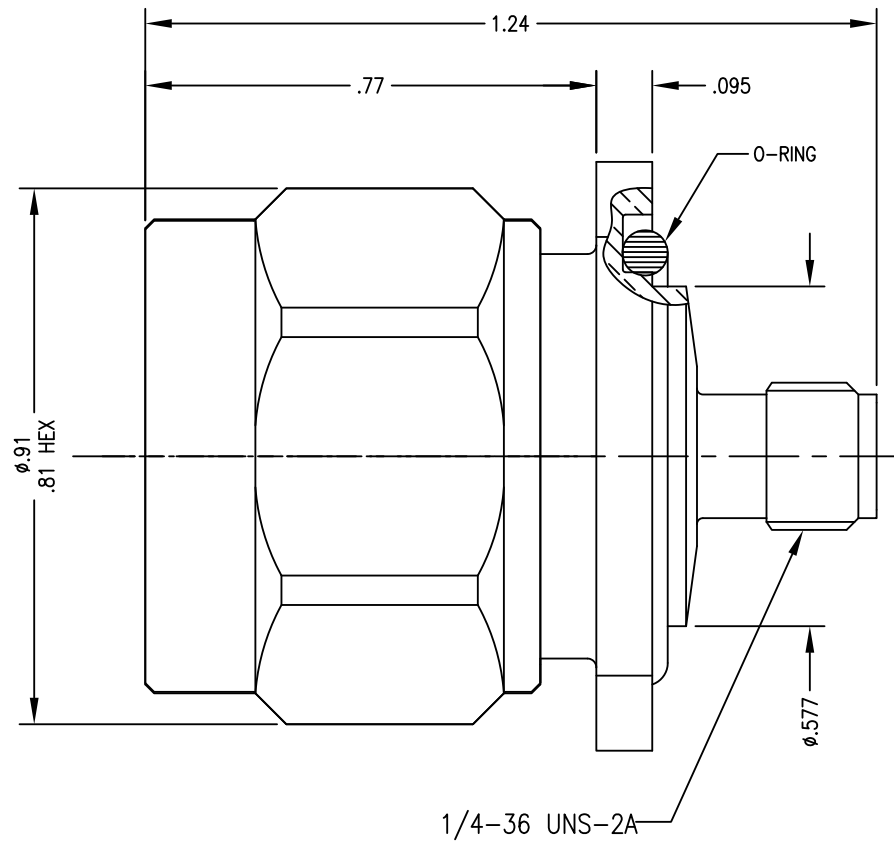
- 2.0 MATERIALS: RoHS
 2.1 DIELECTRIC: PTFE
 2.2 CONTACT: BeCu
 2.3 LOCKING RING: BRONZE
 2.4 OTHER METAL PARTS: BRASS
 2.5 GASKET: Si RUBBER
 3.0 FINISHES: SEE TABLE

- 4.0 MECHANICAL
 4.1 INTERFACE PER MIL-STD-348
 4.2 CONTACT RETENTION: 6 LBS AXIAL
 4.3 OUTER CONTACT:
 STD: SLOTTED
 M1: SOLID

DWG NO. OL-0910-102-1			REV. C
PART NUMBER	BODY	CONTACT	C-NUT
* 0910-102-AS	ALBALOY	SILVER	ALBALOY
0910-102-SSA	SILVER	SILVER	ALBALOY
0910-102-SS	SILVER	SILVER	SILVER
* 0910-102 M1-AS	ALBALOY	SILVER	ALBALOY
0910-102 M1-SSA	SILVER	SILVER	ALBALOY

PLATE PER STI 7.3.1-8
 * SUGGESTED PREFERENCE

DO NOT SCALE DRAWING



Rev.	Revisions	Disp.	Date	Dwn.	Appd.
C	COMBINE STD & M1 INTO SINGLE DWG / .77 WAS .71	MIX	4/22/13	FSH	FSH
B	ADD PIM PERFORMANCE	MIX	5/2/12	FSH	FSH
A	ORIGINAL	NEW	9/11/08		


Ref.: SK-	REMOVE ALL BURRS AND SHARP EDGES .005 MAX.	INTERPRET PER ASME Y14.5M-1994
-----------	--	--------------------------------

THIS DRAWING CONTAINS CONFIDENTIAL INFORMATION PROPRIETARY TO SAN-TRON, INC. IT MUST NOT BE REPRODUCED OR DISCLOSED TO OTHERS OR USED IN ANY OTHER WAY, IN WHOLE OR PART EXCEPT AS AUTHORIZED IN WRITING BY SAN-TRON, INC.

UNLESS OTHERWISE SPECIFIED:
 ALL DIMENSIONS ARE IN INCHES.
 ALL DIMENSIONS ARE AFTER PLATING.
 .XXX = ±.005 ALL MACHINED SURFACES $\sqrt{64}$ MAX.
 .XX = ±.01 ANG. ±1/2° FRACTIONAL = ±1/64
 ◎.004 MAX. TIR. ⊥ AXIS .001

THIRD ANGLE PROJECTION

DWN	JTH	9/11/08
CHKD	SJS	9/11/08
APPR	FSH	9/11/08



SAN-TRON, INC.
 4 NEWBURYPORT TPK. IPSWICH MA USA 01938
 TEL: 978-356-1585 FAX: 978-356-1573
 WWW.SANTRON.COM E MAIL: SANTRON@SANTRON.COM

TITLE ADAPTER, STRAIGHT, PANEL MTD W/ O-RING N (M) TO SMA (F)

MATERIAL: SEE NOTES FINISH: SEE TABLE

CAGE CODE: 50896 DWG NO. OL-0910-102-1 REV. C

SCALE X:X