

## HyperLink Wireless 900 MHz 11 dBi Horizontally Polarized 120° Degree Sector Panel Antenna Model: HG911HSP-120

### Applications and Features

- Applications:**
- 900MHz ISM Band
  - Wireless LAN systems
  - Wireless Video Links
  - Non Line of Sight (NLOS)
  - 900MHz Cellular
  - Base Station Equipment
  - 900MHz Service Provider "cell" sites

- Features:**
- Superior performance Horizontal Polarized
  - All weather operation
  - 120° beam-width
  - 15° Down-Tilt Mounting Bracket
  - Includes Mast Mounting Hardware
  - Integral N-Female Connector
  - RoHS Compliant



### Description

#### Superior Performance

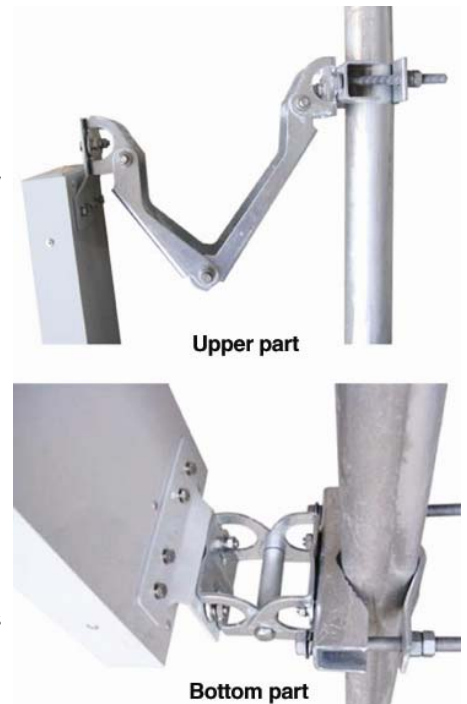
The HyperGain® HG911HSP-120 Sector Panel Antenna provides 11 dBi gain, Horizontally Polarized, with a wide 120° beam-width. It is a professional quality "cell site" antenna designed primarily for service providers in the 900MHz band. It is ideally suited for 900MHz ISM and GSM bands. Typical applications include 900MHz Wireless LAN, SCADA, Wireless Video Links and 900MHz Cellular.

#### Rugged and Weatherproof

This antenna features a heavy-duty plastic radome for all-weather operation. The mounting system adjusts from 0 to 15 degrees down tilt.

#### Ideal for 900 MHz Wireless Service Provider "Cell" Sites

This sector antenna is an ideal choice for Wireless Service Internet Provider "cell" sites since the cell size can be easily determined by adjusting the down-tilt angle. The 120° beam-width is ideal for covering large service areas.



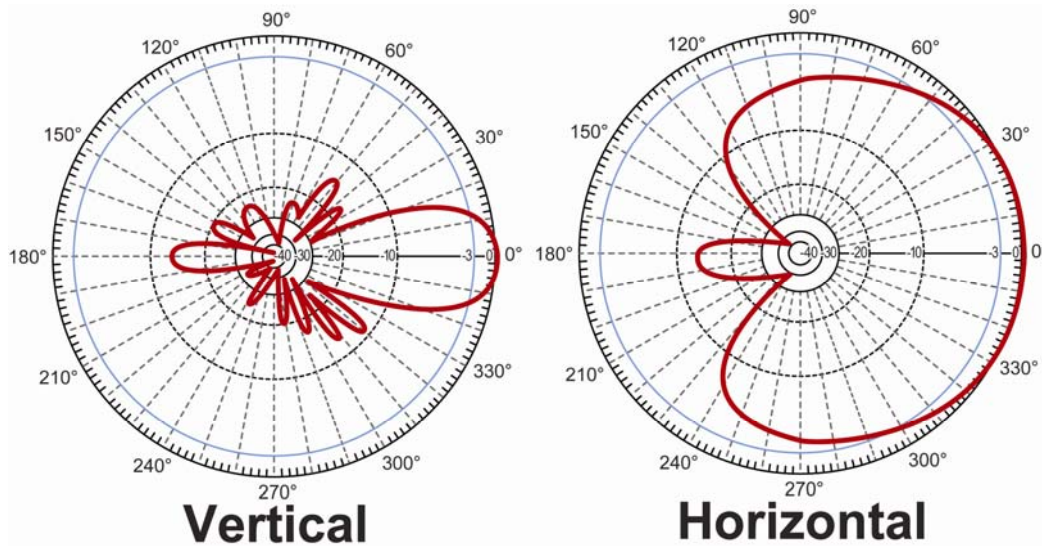
**Specifications**

<b>Frequency</b>	900-930 MHz
<b>Gain</b>	11 dBi
<b>Horizontal Beam Width</b>	120 degrees
<b>Vertical Beam Width</b>	26 degrees
<b>Impedance</b>	50 Ohm
<b>Max. Input Power</b>	250 Watts
<b>VSWR</b>	< 2.0:1 avg.
<b>Connector</b>	7/16 DIN
<b>Lightning Protection</b>	DC Short
<b>Weight</b>	14.32 lbs. ( 6.5 Kg)
<b>Dimensions</b>	50.6 x 7.9 x 2.8 inches (1285 x 200 x 70 mm)
<b>Radome Material</b>	UV-Inhibited Polymer
<b>Operating Temperature</b>	-40° C to 65° C (-40° F to 149° F)
<b>Mounting</b>	2" (40 mm) to 3.1" (90 mm) O.D. pipe max.
<b>Polarization</b>	Horizontal
<b>Down tilt (mech)</b>	0 to 15 degrees (adjustable)
<b>RoHS Compliant</b>	Yes

**Wind Loading Data: Rated to 210km/h**

Wind Speed (MPH)	Loading
100	147 lb.
125	227 lb.

**RF Antenna Gain Patterns**



**Guaranteed Quality**

This product is backed by L-Com's Limited Warranty