

# Surface Mount Low Pass Filter

## SCLF-5+ SCLF-5

50Ω DC to 5 MHz



### Maximum Ratings

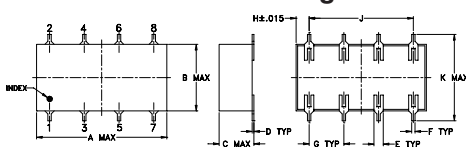
Operating Temperature	-40°C to 85°C
Storage Temperature	-55°C to 100°C
RF Power Input	0.5W max.

Permanent damage may occur if any of these limits are exceeded.

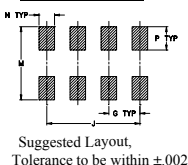
### Pin Connections

INPUT	1
OUTPUT	8
GROUND	2,3,4,5,6,7

### Outline Drawing



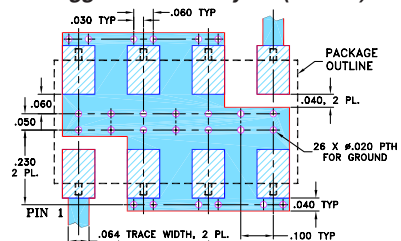
### PCB Land Pattern



### Outline Dimensions (inch/mm)

A	B	C	D	E	F	G
0.75	0.38	0.28	0.01	0.05	0.02	0.2
19.05	9.65	7.11	0.25	1.27	0.51	5.08
H	J	K	M	N	P	wt
0.075	0.6	0.45	0.47	0.1	0.15	grams
1.91	15.24	11.43	11.94	2.54	3.81	1.60

### Demo Board MCL P/N: TB-187+ Suggested PCB Layout (PL-049)



- NOTES: 1. TRACE WIDTH IS SHOWN FOR ROGERS RO4350B WITH DIELECTRIC THICKNESS .030" ± .002"; COPPER: 1/2 OZ. EACH SIDE. FOR OTHER MATERIALS TRACE WIDTH MAY NEED TO BE MODIFIED.  
2. BOTTOM SIDE OF THE PCB IS CONTINUOUS GROUND PLANE.
- DENOTES PCB COPPER LAYOUT WITH SMOBC (SOLDER MASK OVER BARE COPPER)
  - DENOTES COPPER LAND PATTERN FREE OF SOLDER MASK

### Features

- wide selection of cut-off frequencies
- excellent rejection
- custom models available

### Applications

- defense communications
- receivers/transmitters
- harmonic rejection of VCOs

### Electrical Specifications

Parameter	F#	Frequency (MHz)	Min.	Typ.	Max.	Unit	
Pass Band	Insertion Loss	DC-F1	DC-5	—	—	1.0	dB
	Freq. Cut-Off	F2	5.8	—	3.0	—	dB
	VSWR	DC-F1	DC-5	—	1.7	—	:1
Stop Band	Rejection Loss	F3-F4	8-10	20	—	—	dB
		F4-F5	10-200	40	—	—	dB
	VSWR	F3-F5	8-200	—	18	—	:1

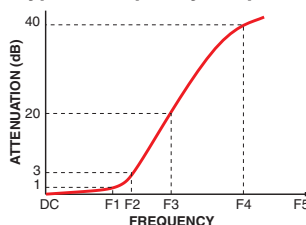
CASE STYLE: YY161

PRICE: \$14.95 ea. QTY (1-9)

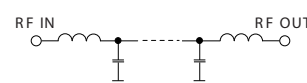
+ RoHS compliant in accordance with EU Directive (2002/95/EC)

The +Suffix identifies RoHS Compliance. See our web site for RoHS Compliance methodologies and qualifications.

### Typical Frequency Response

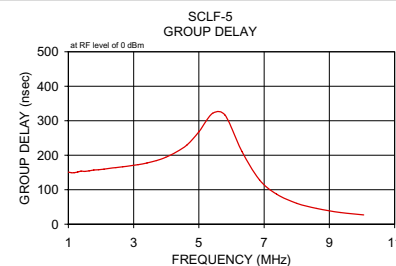
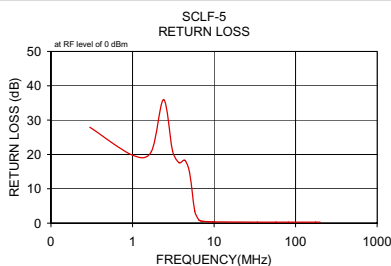
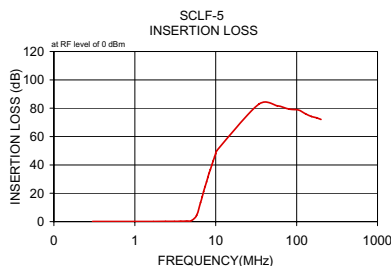


### Electrical Schematic



### Typical Performance Data

Frequency (MHz)	Insertion Loss (dB)	Return Loss (dB)	Frequency (MHz)	Group Delay (nsec)
	$\bar{x}$	$\sigma$		
0.30	0.05	0.00	1.00	150.94
1.00	0.11	0.01	1.09	149.44
1.70	0.13	0.01	20.83	149.56
2.40	0.15	0.00	35.97	151.58
3.10	0.24	0.02	20.96	139.73
3.70	0.34	0.04	17.62	153.16
4.40	0.44	0.02	18.29	154.81
5.00	0.71	0.05	14.82	157.02
5.80	4.39	0.64	3.50	157.96
6.50	13.41	0.69	0.92	159.54
6.80	17.44	0.61	0.69	161.84
7.10	21.22	0.55	0.59	163.94
7.40	24.76	0.52	0.53	166.34
7.70	28.06	0.49	0.49	169.53
8.00	31.17	0.48	0.46	172.46
8.30	34.08	0.47	0.44	177.65
8.60	36.83	0.46	0.42	184.69
9.00	40.28	0.44	0.40	193.77
9.30	42.71	0.42	0.39	209.32
9.70	45.76	0.39	0.38	230.37
10.00	47.94	0.39	0.38	267.85
10.30	50.00	0.45	5.42	321.82
34.00	82.82	4.44	5.80	316.39
57.70	81.71	2.14	6.32	210.99
81.40	79.29	0.47	6.86	128.64
105.20	78.72	1.24	7.38	87.23
128.90	76.10	1.22	8.00	60.47
152.60	74.23	1.04	8.61	45.55
176.30	73.30	0.56	9.34	33.91
200.00	72.10	0.48	10.05	26.94



P.O. Box 350166, Brooklyn, New York 11235-0003 (718) 934-4500 Fax (718) 332-4661 The Design Engineers Search Engine Provides ACTUAL Data Instantly at [minicircuits.com](http://minicircuits.com)

IF/RF MICROWAVE COMPONENTS

Notes: 1. Performance and quality attributes and conditions not expressly stated in this specification sheet are intended to be excluded and do not form a part of this specification sheet. 2. Electrical specifications and performance data contained herein are based on Mini-Circuits' applicable established test performance criteria and measurement instructions. 3. The parts covered by this specification sheet are subject to Mini-Circuits standard limited warranty and terms and conditions (collectively, "Standard Terms"); Purchasers of this part are entitled to the rights and benefits contained therein. For a full statement of the Standard Terms and the exclusive rights and remedies thereunder, please visit Mini-Circuits' website at [www.minicircuits.com/MCLStore/terms.jsp](http://www.minicircuits.com/MCLStore/terms.jsp).

REV. D  
M111708  
SCLF-5  
100114