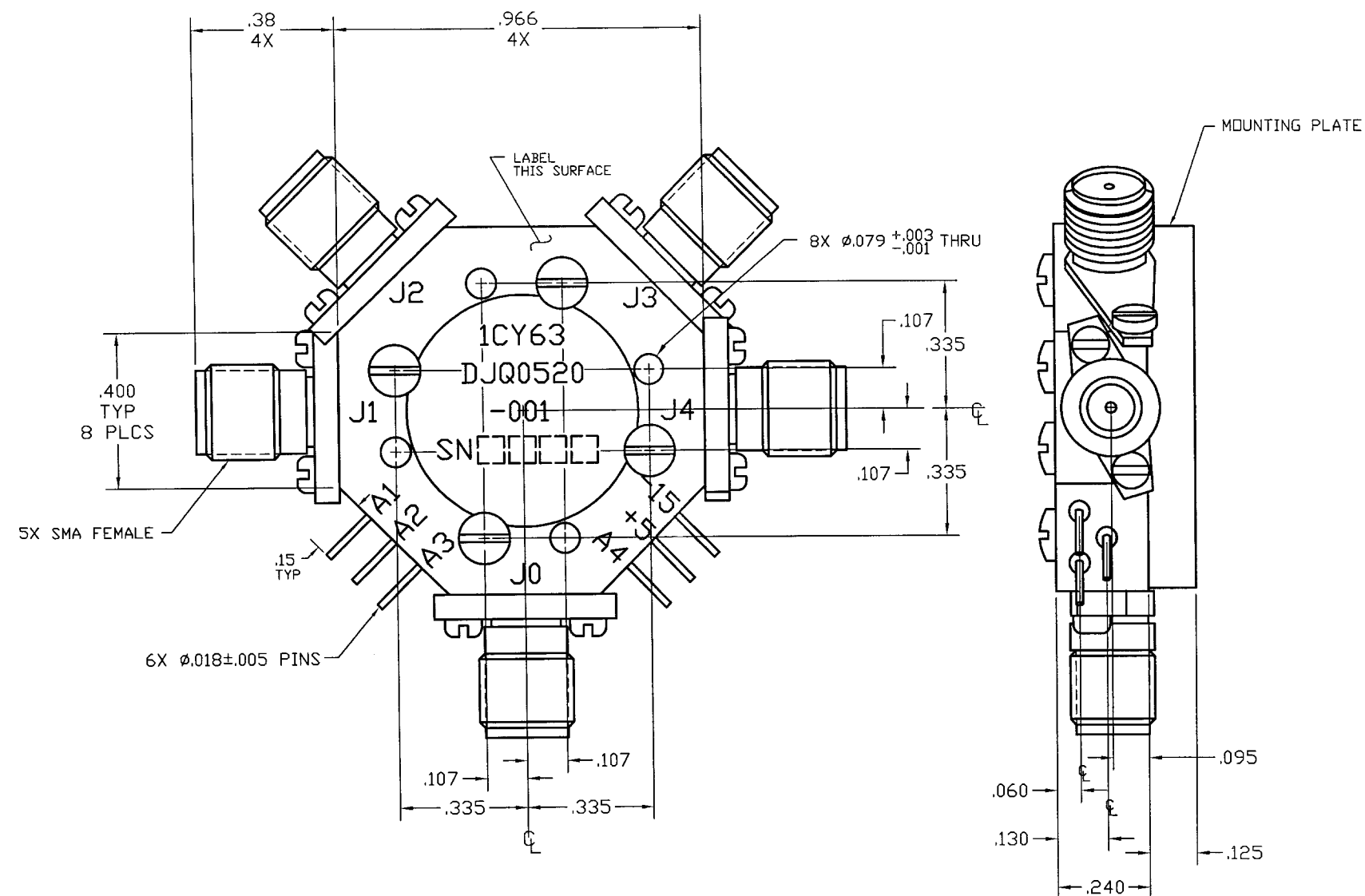


COMPUTER GENERATED DRAWING
MANUAL CHANGES NOT AUTHORIZED


REVISIONS

REV.	DESCRIPTION	DATE	RELEASED BY
NC	INITIAL RELEASE	2-10-95	TR
A	REV PER ECN: 6822, 9830	5-10-05	R. TS



SPECIFICATIONS:

FREQUENCY:	0.5 - 20.0 GHz		
INSERTION LOSS:	0.5-4.0 GHz	1.5 dB	MAX
	4.0-12.0 GHz	2.1 dB	MAX
	12.0-18.0 GHz	2.8 dB	MAX
	18.0-20.0 GHz	3.3 dB	MAX
VSWR:	2.0:1 MAX		
ISOLATION:	0.5-12.0 GHz	60 dB	MIN
	12.0-18.0 GHz	55 dB	MIN
	18.0-20.0 GHz	50 dB	MIN
SWITCHING SPEED:	75nSEC		
CONTROL:			
	TTL LOW - INSERTION LOSS		
	TTL HI - ISOLATION		
TEMPERATURE:			
OPERATING:	-54° TO +100° C		
STORAGE:	-54° TO +100° C		
BIAS CONDITIONS:	+5V @ 100 mA MAX		
	-15V @ 50 mA MAX		

ITEM		QTY REQ'D	FSCM NO.	PART OR IDENTIFICATION NO.	NOMENCLATURE OR DESCRIPTION		MATERIAL SPECIFICATION				
PARTS LIST											
<div>UNLESS OTHERWISE SPECIFIED DIMENSIONS ARE IN INCHES TOLERANCES ARE: FRACTIONS DECIMALS ANGLES ± .XX± .02 ± .XXX± .010</div>				CONTRACT NO.		<div> SIERRA MICROWAVE TECHNOLOGY</div> <div>TITLE: OUTLINE FOR DJQ0520-001</div>					
				APPROVALS						DATE	
				MATERIAL:						DRAWN: D STALEY	2-08-95
										CHECKED:	
										DESIGN ENG. T RODRIGUEZ	2-10-95
<div>FINISH:</div>				MAT. & PROCESSES		<div>SIZE B</div> <div>FSCM NO. 1CY63</div> <div>DWG NO. 605-0045-001</div> <div>REV A</div>					
				Q.A.							
603-0004-001		DJQ0520-001									
LIST OF MAT'L		USED ON									
APPLICATION				DO NOT SCALE DRAWING		BRDR SCALE		SHEET OF			