

## HyperLink Wireless Brand 5.8 GHz 23 dBi High Performance Die Cast Aluminum Reflector Grid Antenna - Model: HG5822EG

### Features

- Superior Performance
- UV Stable Light Gray Powder Coat Finish
- All Weather Operation
- Light weight cast aluminum construction
- Two piece design

### Applications

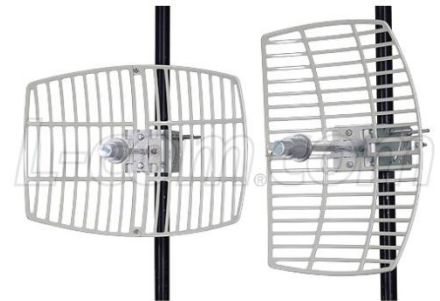
- 5.8 GHz 802.11a/n Wireless LAN Systems
- 5.8 GHz UNII and ISM Applications
- Long-Range Directional Applications
- Point to Point, Point to Multi-point Systems
- Wireless Bridges and Backhaul Applications



### Description

#### Superior Performance

The HyperLink HG5822EG High-Performance Reflector Grid Wi-Fi Antenna is ideal for long-range highly directional 5.8 GHz 802.11a/n applications. These antennas are ideal for point to point systems, point to multi-point and wireless bridges. Its compact design makes it nearly invisible in most installations, and it can be installed for either vertical or horizontal polarization.



#### Rugged and Weatherproof

The antennas' construction features a die cast aluminum reflector grid for superior strength and light weight. The 2-piece reflector grid is simple to assemble and significantly reduces shipping costs. The grid surface is UV powder coated for durability and aesthetics. The open-frame grid design minimizes wind loading.



This antenna is supplied with a tilt and swivel mast mount kit. This allows installation at various degrees of incline for easy alignment. They can be adjusted up or down from 0° to 60°.

**Specifications**

**Mechanical Specifications**

<b>Connector</b>	N Female
<b>Weight</b>	2.51 lbs (1.14kg)
<b>Grid Dimensions</b>	11.81" x 15.75" (400mm x 600mm)
<b>Mounting Mast Diameter</b>	1.58" x 1.97" (40-50MM)

**Electrical Specifications**

<b>Frequency</b>	5725-5850 MHz
<b>Gain</b>	23 dBi
<b>Horizontal Beamwidth</b>	10°
<b>Vertical Beamwidth</b>	12°
<b>Polarization</b>	Vertical or Horizontal
<b>Impedance</b>	50 Ohm
<b>F/B Ratio</b>	25dB
<b>Max. Input Power</b>	100 Watts
<b>VSWR</b>	< 1.5
<b>Lightning Protection</b>	DC Short

**Wind Loading Data**

Wind Speed (MPH)	Loading
100	10.0 lb.
120	15.6 lb.

**RF Antenna Patterns**

