

Features

- Frequency Range: 200~450MHz
- High Gain: 75.0dB(typ)
- Output Limiting Level:12.0dBm(Typical)
- Standard Hermetic Package
- Operating Temperature Range: -55°C~+85°C

Electrical (50 Ω, V_{CC}=+15V, -55°C ≤ T_A ≤ +85°C)

Parameter	Symbol	Unit	Guaranteed	Typical
Frequency range	f _L ~f _H	MHz	200~450	200~450
Gain	G _p	dB	70.0	75.0
Gain Flatness	ΔG _p	dB	±0.5	±0.3
Noise figure	F _n	dB	7.0 ^Δ	5.0
Output Limiting level	P _o	dBm	10.0	12.0
VSWR	VSWR	—	2.0:1	1.3:1
Phase Variation	ΔPH	°	±5	±3
Limiting	—	dB	-60~12	-62~12
Supply current	I _{CC}	mA	300	240

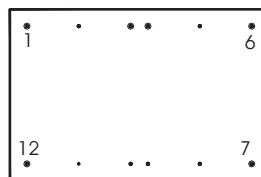
Note: “ Δ ” T_A=24 ± 1°C.

Maximum Ratings

Power supply: +16.0V_{DC}

RF input: +20dBm

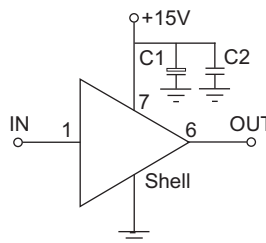
Storage Temp: +150°C



HD-28A-1

Application Notes

1. Typical application shown as right, C₁=3.3~22 μF, C₂=1000~3300pF.
2. pin function:
1.input 6.output 7.power supply
other:GND



Typical Curves

