

Features

- Frequency Range: 20~3600MHz
- Active Bias Design Supply Temperature Compensation
- Standard Hermetic Package
- Operating Temperature Range: -55°C~+85°C

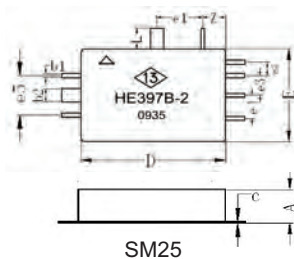
Electrical (50Ω, V_{CC}=+5V, T_A=-55°C~+85°C)

Parameter	Symbol	Unit	Guaranteed	Typical
Frequency Range	f _L ~f _H	MHz	20~3600	20~3600
Gain	G _p	dB	≥20.0	22.0
Gain Flatness	ΔG _p	dB	≤±1.0	±0.5
Noise Figure	F _n	dB	≤3.0 Δ	2.5
Input VSWR	VSWR _i	--	≤2.0:1 Δ	1.7:1
Output VSWR	VSWR _o	--	≤2.0:1 Δ	1.7:1
For 1dB Compression	P ₋₁ *	dBm	≥15.0* Δ	16.5
Supply Current	I _{CC}	mA	--	85

Note: "*" f=2000 MHz. "Δ" T_A=24±1°C.

Maximum Ratings

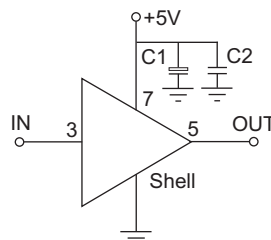
- Power supply: +7V_{DC}
- RF input: +10dBm
- Storage Temp: +125°C



Symbol	Value		
	Min	Nominal	Max
A	4.9	—	5.4
b1	0.3	—	0.6
b2	1.3	—	1.7
c	0.1	—	0.4
D	19.7	—	20.3
e1	—	6.0	—
e2	—	2.0	—
e3	—	3.0	—
e4	—	3.5	—
e5	—	6.0	—
E	13.6	—	14.2
L	1.0	—	—
Z	3.7	—	4.3

Application Notes

1. Typical application shown as right, C₁=3.3~22 μF, C₂=3300~6800pF.
2. ESD observe handling precautions.
3. See assembly section for outline and mounting information.



Typical Curves

