

# SMA-M R ANGLE RG316 CRIMP CONNECTOR

SC6052

## SPECIFICATIONS

### ELECTRICAL:

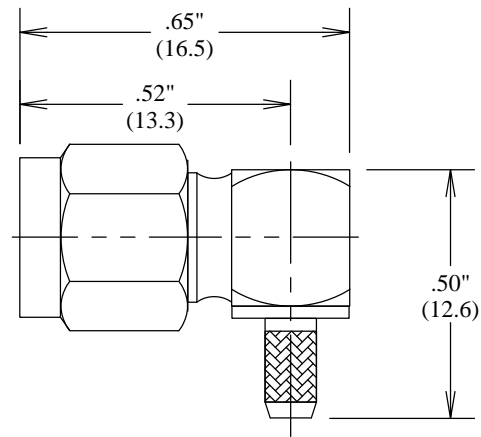
FREQUENCY: 0-6 GHZ  
VSWR 1.3:1 MAX  
IMPEDANCE: 50 OHMS

### MECHANICAL:

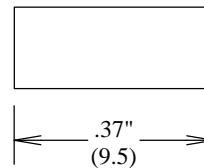
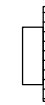
MATERIAL BODY: NICKEL PLATED BRASS  
CENTER CONTACT: BRASS  
CONTACT PLATING: Au PER MIL-G-45204  
INSULATOR: TEFLON  
INTERFACE: MIL-STD-348A

OPERATING TEMPERATURE: -65°C TO +165°C

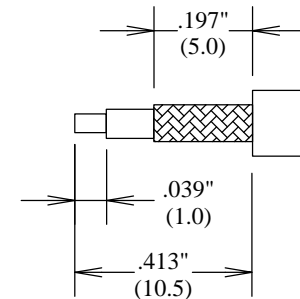
ROHS COMPLIANT



CAP



HEAT SHRINK TUBE



STRIPPING DIMENSIONS

				<b>FAIRVIEW MICROWAVE INC.</b>			
				ALLEN, TX 75013 WWW.FAIRVIEWMICROWAVE.COM			
				TITLE			
				SMA-M R ANGLE RG316 CRIMP CONNECTOR			
ALL DIMENSIONS IN inches(MM) Typical				SIZE	CAGE CODE	DWG NO	REV
				<b>A</b>	<b>3FKR5</b>	<b>SC6052</b>	--
				SCALE	SHEET		