

REVISIONS				
ZONE	REV	DESCRIPTION	DATE	APPROVED

SPECIFICATION

Frequency Range: 0.85–2.5 GHz
 Attenuation: 40dB
 Insertion Loss: 0.5 Max.
 VSWR: 1.50:1 Max.
 RF Power: 15W Average

MATERIAL:	
DRAWN: Paiboon Luekhamthan	DATE: 02-10-2011
APPROVED: T. Nguyen	DATE: 02-10-2011



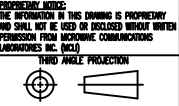
MICROWAVE COMMUNICATIONS LABORATORIES INC.
 7255 30TH AVE. N. SAINT PETERSBURG, FL 33710
 TEL: (727) 344-6254 FAX: (727) 381-6116
 http://WWW.MCLI.COM

SCALE:	N/A
SHEET:	N/A

UNLESS OTHERWISE SPECIFIED:
 TOLERANCES
 IN (INCHES) OR [mm] (MILLIMETERS)
 FRACTIONS: ± 1/64
 DECIMALS: ± 0.01 ± 0.005
 ANGLE: ± 1/2°

DRAWING TITLE:
 CONTINUOUSLY VARIABLE ATTENUATOR, HIGH POWER

PART NO.:
 HA15-1-40



CAGE CODE:
 OD2L5

SIZE: C
 REV: N/A
 DO NOT SCALE THE DRAWING

DWG NO.:
 85499