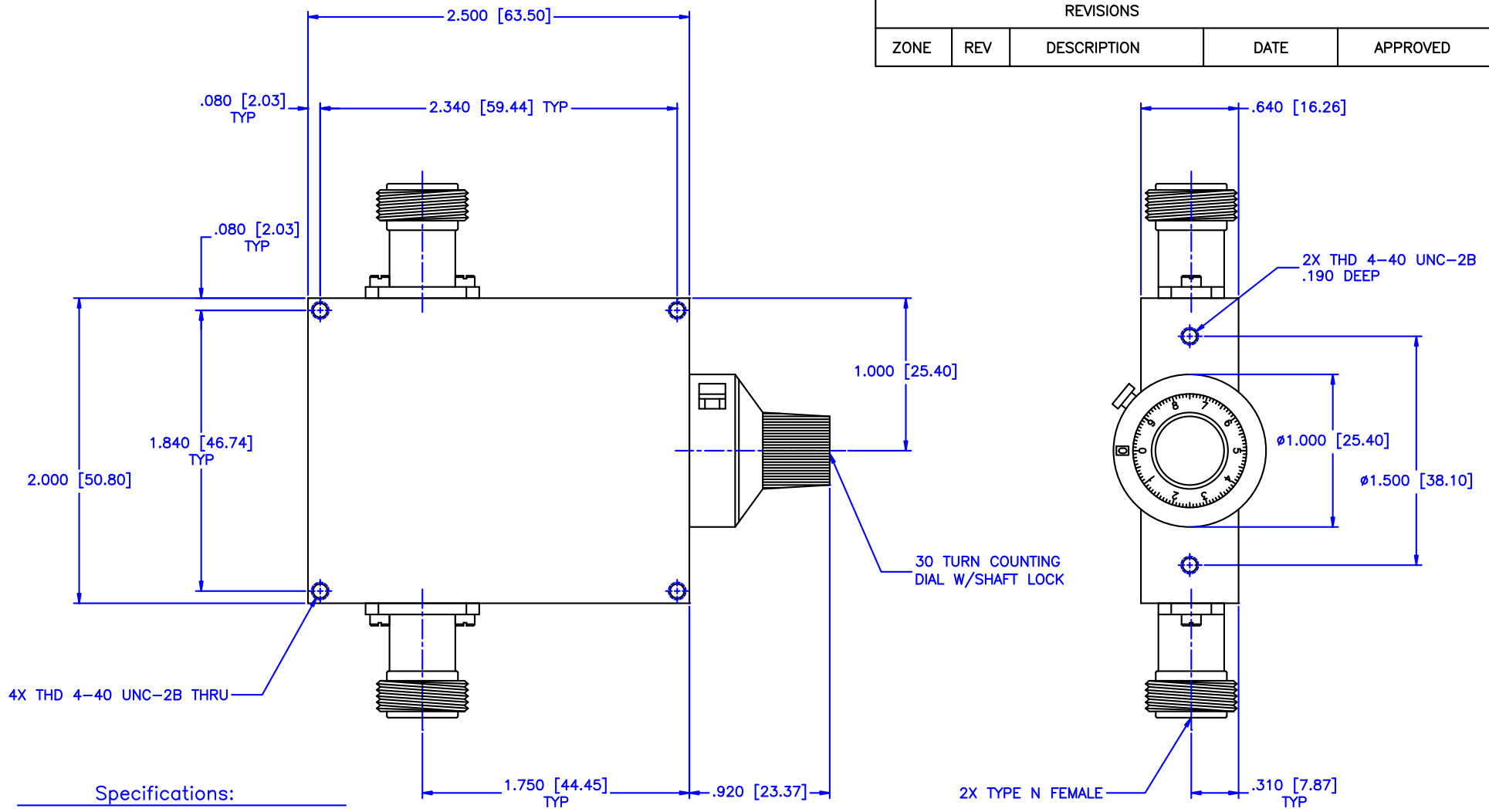


REVISIONS				
ZONE	REV	DESCRIPTION	DATE	APPROVED



**Specifications:**  
 Frequency Range: 6–18 GHz  
 Attenuation: 60dB  
 Insertion Loss: 0.5 Max.  
 VSWR: 1.50:1  
 RF Power: 7W Average, 3kW Peak

**Environmental:**  
 Temperature range: –55°C to +110°C  
 Shock: 15 G's, 11mS, 1/2 sine  
 Vibration: 3 G's overall  
 Altitude: 40,000 ft. Survival 25,000ft Operating

MATERIAL:			MICROWAVE COMMUNICATIONS LABORATORIES INC. 7255 30TH AVE. N. SAINT PETERSBURG, FL 33710 TEL: (727) 344-6254 FAX: (727) 381-6116 http://WWW.MCLI.COM		SCALE:	N/A
			UNLESS OTHERWISE SPECIFIED: TOLERANCES IN (INCHES) OR [mm] (MILLIMETERS) FRACTIONS: ± 1/64 DECIMALS: ±.01 ±.005 ANGLE: ±1/2°		DRAWING TITLE:	CONTINUOUSLY VARIABLE ATTENUATOR WITH DIAL
DRAWN:	DATE:	<small>PROPRIETARY NOTICE:</small> THE INFORMATION IN THIS DRAWING IS PROPRIETARY AND SHALL NOT BE USED OR DISCLOSED WITHOUT WRITTEN PERMISSION FROM MICROWAVE COMMUNICATIONS LABORATORIES INC. (MCLI)	PART NO.			
PAIBOON LUEKHAMHAN	02-08-2011		CVA23-60/DNF			
APPROVED:	DATE:	<small>THIRD ANGLE PROJECTION</small> 	CAGE CODE:	SIZE:	REV:	DWG NO.
T. NGUYEN	02-08-2011		0D2L5	A	N/A	85434
DO NOT SCALE THE DRAWING						