

Coaxial Low Pass Filter

BLP-70+

50Ω DC to 60 MHz

Maximum Ratings

Operating Temperature -55°C to 100°C

Storage Temperature -55°C to 100°C

RF Power Input 0.5W max.

Permanent damage may occur if any of these limits are exceeded.

Features

- rugged shielded case
- other standard and custom BLP models available with wide selection of fco

Applications

- test equipment
- lab use
- video equipment



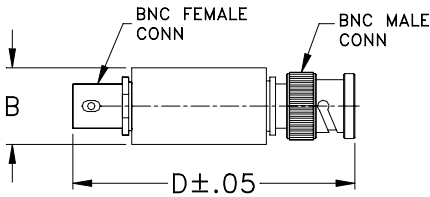
CASE STYLE: FF55

Connectors Model
BNC BLP-70+

+RoHS Compliant

The +Suffix identifies RoHS Compliance. See our web site for RoHS Compliance methodologies and qualifications

Outline Drawing



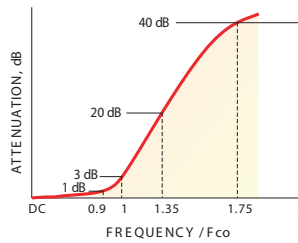
Outline Dimensions (inch/mm)

| B | D | wt |
|-------|-------|-------|
| .54 | 2.59 | grams |
| 13.72 | 65.79 | 40.0 |

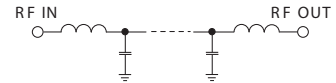
Low Pass Filter Electrical Specifications

| PASSBAND (MHz) | fco (MHz) Nom. | STOPBAND (MHz) | | VSWR (:1) | |
|----------------|----------------|----------------|----------------|---------------|---------------|
| | | (loss > 20 dB) | (loss > 40 dB) | Passband Typ. | Stopband Typ. |
| DC-60 | 67 | 90-117 | 117-300 | 1.7 | 18 |

typical frequency response

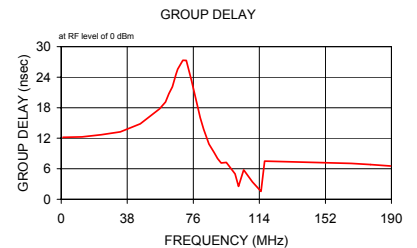
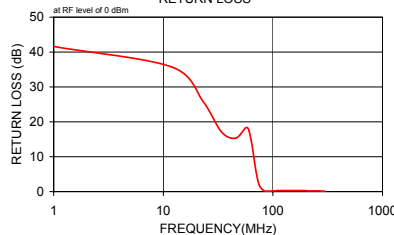
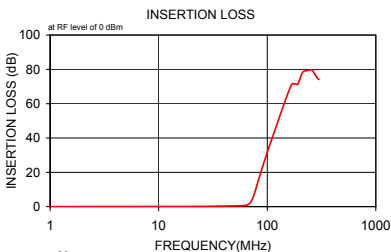


electrical schematic



Typical Performance Data

| Frequency (MHz) | Insertion Loss (dB) | | Return Loss (dB) | Frequency (MHz) | Group Delay (nsec) |
|-----------------|---------------------|----------|------------------|-----------------|--------------------|
| | \bar{x} | σ | | | |
| 1.00 | 0.02 | 0.1 | 41.6 | 1.00 | 12.18 |
| 12.00 | 0.09 | 0.1 | 35.7 | 12.00 | 12.27 |
| 23.00 | 0.14 | 0.1 | 25.9 | 23.00 | 12.70 |
| 34.00 | 0.30 | 0.1 | 17.1 | 34.00 | 13.24 |
| 45.50 | 0.38 | 0.1 | 15.3 | 45.50 | 14.84 |
| 56.50 | 0.48 | 0.1 | 18.3 | 56.50 | 17.75 |
| 60.00 | 0.57 | 0.1 | 17.8 | 60.00 | 19.13 |
| 64.00 | 0.81 | 0.1 | 13.9 | 62.00 | 20.78 |
| 67.00 | 1.27 | 0.2 | 9.8 | 64.00 | 22.11 |
| 70.00 | 2.40 | 0.5 | 5.9 | 66.00 | 24.56 |
| 75.00 | 6.44 | 0.7 | 1.9 | 67.00 | 25.58 |
| 82.00 | 14.32 | 0.6 | 0.3 | 70.00 | 27.33 |
| 85.00 | 17.61 | 0.6 | 0.1 | 72.00 | 27.29 |
| 88.00 | 20.73 | 0.5 | 0.1 | 75.00 | 23.25 |
| 90.00 | 22.72 | 0.5 | 0.1 | 80.00 | 16.05 |
| 92.00 | 24.63 | 0.4 | 0.1 | 82.00 | 13.76 |
| 100.00 | 31.63 | 0.3 | 0.2 | 85.00 | 10.85 |
| 105.00 | 35.63 | 0.3 | 0.2 | 88.00 | 9.20 |
| 110.00 | 39.22 | 0.3 | 0.3 | 90.00 | 8.00 |
| 115.00 | 42.79 | 0.3 | 0.3 | 92.00 | 7.14 |
| 117.00 | 44.09 | 0.3 | 0.3 | 95.00 | 7.25 |
| 167.00 | 71.03 | 2.8 | 0.3 | 100.00 | 4.98 |
| 189.50 | 71.25 | 4.9 | 0.3 | 102.00 | 2.55 |
| 211.50 | 78.21 | 8.2 | 0.2 | 105.00 | 5.78 |
| 233.50 | 79.29 | 6.9 | 0.2 | 110.00 | 3.41 |
| 255.50 | 79.68 | 7.6 | 0.2 | 115.00 | 1.56 |
| 267.00 | 78.34 | 9.9 | 0.2 | 117.00 | 7.50 |
| 278.00 | 76.60 | 3.1 | 0.1 | 167.00 | 7.04 |
| 289.00 | 75.01 | 2.8 | 0.1 | 178.00 | 6.83 |
| 300.00 | 74.09 | 4.1 | 0.1 | 189.50 | 6.54 |



Notes

- Performance and quality attributes and conditions not expressly stated in this specification document are intended to be excluded and do not form a part of this specification document.
- Electrical specifications and performance data contained in this specification document are based on Mini-Circuit's applicable established test performance criteria and measurement instructions.
- The parts covered by this specification document are subject to Mini-Circuits standard limited warranty and terms and conditions (collectively, "Standard Terms"); Purchasers of this part are entitled to the rights and benefits contained therein. For a full statement of the Standard Terms and the exclusive rights and remedies thereunder, please visit Mini-Circuits' website at www.minicircuits.com/MCLStore/terms.jsp

