



30 dB Fixed Attenuator, TNC Male To TNC Female Black Anodized Aluminum Heatsink Body Rated To 25 Watts Up To 18 GHz

TECHNICAL DATA SHEET

PE7375-30

Configuration

Design	Fixed, Bidirectional Attenuator
Connector 1	TNC Male
Connector 2	TNC Female
Body Material and Plating	Black Anodized Aluminum Heatsink

Electrical Specifications * Values at 25°C, sea level

Description	Minimum	Typical	Maximum	Units
Frequency Range	DC		18	GHz
Impedance		50		Ohms
Attenuation Value		30 to 30		dB
Input Power			25	Watts
Peak Power			500	Watts
VSWR			1.6:1	

Specifications by Frequency

Description	F1	F2	F3	F4	F5	Units
Range	DC to 6	6 to 12.4	12.4 to 18			GHz
VSWR	1.3:1	1.45:1	1.6:1			
Attenuation Accuracy	± 0.75	± 1	± 1.5			dB
Maximum Input Power	25					Watts

Mechanical Specifications

Temperature	
Operating Range	-55 to +125 deg C
Size	
Length	4.5 in [114.3 mm]
Width	2.41 in [61.21 mm]
Weight	0.8 lbs [362.87 g]

Click the following link (or enter part number in "SEARCH" on website) to obtain additional part information including price, inventory and certifications: [30 dB Fixed Attenuator, TNC Male To TNC Female Black Anodized Aluminum Heatsink Body Rated To 25 Watts Up To 18 GHz PE7375-30](#)

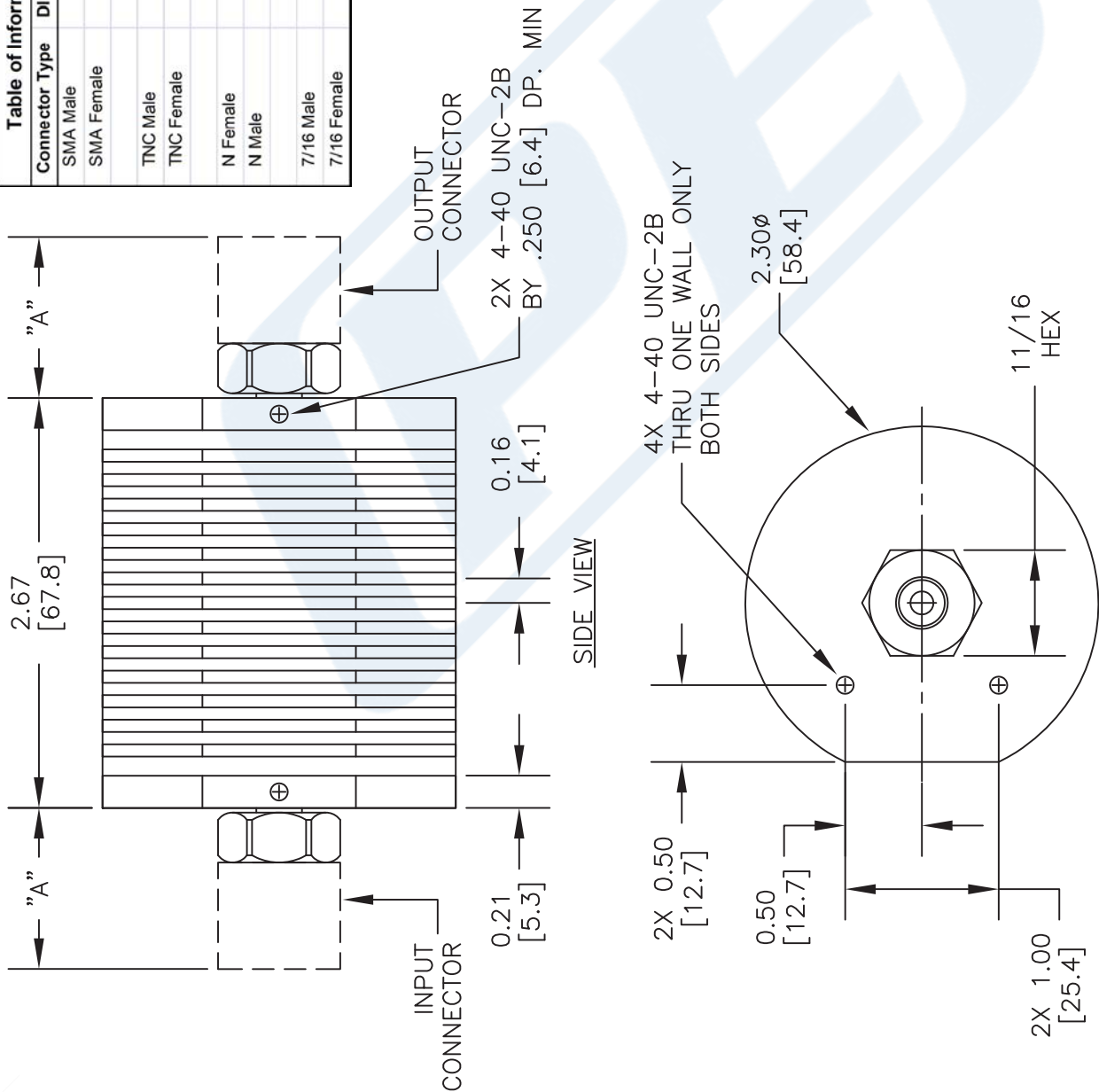


PE7375-30 CAD Drawing

30 dB Fixed Attenuator, TNC Male To TNC Female Black Anodized
Aluminum Heatsink Body Rated To 25 Watts Up To 18 GHz

Table of Information		
Connector Type	DIM "A" (REF.)	
SMA Male	0.68	
SMA Female	0.54	
TNC Male	0.98	
TNC Female	0.94	
N Female	0.95	
N Male	0.98	
7/16 Male	1.12	
7/16 Female	1.16	

Part Number Configuration		
xx	Input Connector	Output Connector
55	SMA Male	7/16 Female
56	SMA Male	N Female
57	SMA Male	SMA Female
58	SMA Male	TNC Female
59	SMA Female	7/16 Female
60	SMA Female	7/16 Male
61	SMA Female	N Female
62	SMA Female	N Male
63	SMA Female	SMA Female
64	SMA Female	TNC Female
65	SMA Female	TNC Female
66	N Male	7/16 Female
67	N Male	N Female
68	N Male	TNC Female
69	N Female	7/16 Female
70	N Female	7/16 Male
71	N Female	N Female
72	N Female	TNC Female
73	N Female	TNC Male
74	TNC Male	7/16 Female
75	TNC Male	TNC Female
76	TNC Female	7/16 Female
77	TNC Female	7/16 Male
78	TNC Female	TNC Female
79	7/16 Male	7/16 Female
80	7/16 Female	7/16 Female
-yy	Indicates Attenuation Level	



DWG TITLE

PE73xx-yy

NOTES:
1. UNLESS OTHERWISE SPECIFIED ALL DIMENSIONS ARE NOMINAL.
2. ALL SPECIFICATIONS ARE SUBJECT TO CHANGE WITHOUT NOTICE AT ANY TIME.
3. DIMENSIONS ARE IN INCHES [mm].

PE PASTERNAK
THE ENGINEER'S RF SOURCE
Pasternack Enterprises, Inc.
P.O. Box 16759 | Irvine | CA | 92623
Phone: (949) 261-1920 | Fax: (949) 261-7451
Website: www.pasternack.com | E-Mail: sales@pasternack.com

FSCM NO. 53919

CAD FILE 030415

SCALE N/A

SIZE A

2233