

RF Attenuator

Negative Control Voltage: 0 to -10 Volts

Model TG9015

5 to 1000 MHz

Features

- Negative Control Voltage: 0 to -10 Volts
- Greater than 20 dB Attenuation
- Environmental Screening Available

Specifications

| CHARACTERISTIC | TYPICAL Ta = 25 °C | MIN/MAX Ta = 0 °C to +50 °C | |
|--|-----------------------|--------------------------------|--------------|
| Frequency | 5 - 1000 MHz | 5 - 1000 MHz | |
| Insertion Loss (Vc=0V) (dB) | 5-500 MHz | 1.5 | 2.0 Max. |
| | 500-1000 MHz | 2.0 | 2.5 Max. |
| Max Attenuation (dB) (Vc = -10V) | 20 | 15 | Min. |
| VSWR (worst Case In Attenuation Range) | In | <1.5:1 | 2.0:1 Max. |
| | Out | <1.75:1 | 2.0:1 Max. |
| Flatness over Freq. | ±0.5 dB | ±0.75 dB Max. | |
| Switching Speed (ms) 10% to 90% | 0.5 | 0.75 | Max. |
| Bias Power | Vdc | + 15 | + 15 |
| | mA | 7 | 10 Max. |
| Control Power | Vdc | 0 to -10 | 0 to -10 |
| | mA | 0 to 7 | 0 to 10 Max. |

Maximum (No Damage) Ratings

Ambient Operating Temperature -55°C to + 125 °C
 Storage Temperature -62°C to + 150 °C
 Case Temperature + 150 °C
 DC Voltage + 18 Volts
 Control Voltage -15 Volts
 Continuous RF Input Power +23 dBm

Packaging Options (see Appendix)

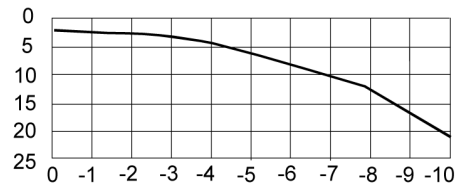
TG9015, 5 Pin TO-8 (T5)
 TNG9015, 4 Pin Surface Mount (SM3)
 BXG9015, Connectorized Housing (H6)

Typical Performance Data @ 25° C

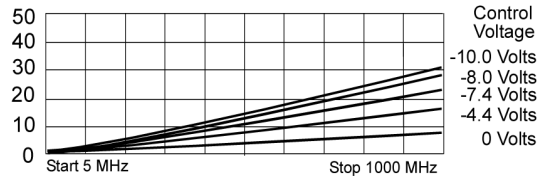
Switching Time Control Pulse = 0 to -10 V.
f = 500 Mhz



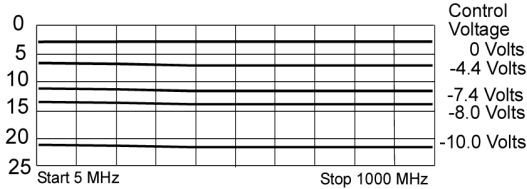
Attenuation (dB) vs. Control Voltage



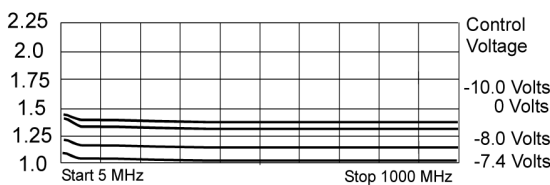
Phase (Deg)



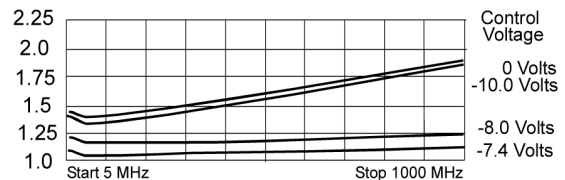
Attenuation



Input VSWR



Output VSWR



Legend ——— + 25 °C - - - - + 50 °C - - - - - 0 °C

