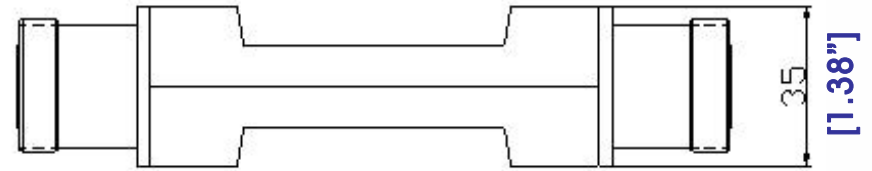
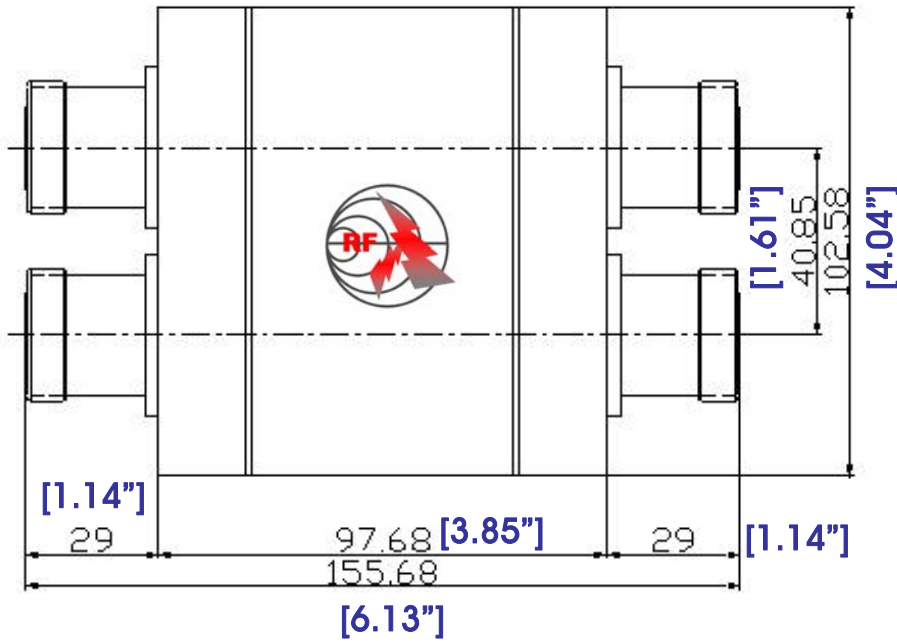


1200W HIGH POWER 3dB 90° HYBIRD




1.0 Mechanical Specifications		
1.1	Connector	7/16Brass, Nickel Plate
1.2	Connect Pins	Beryllium Copper, Gold Plate
1.3	Housing	Aluminum, Gray paint
1.4	Weight	0.4/0.3kg
1.5	Insulators	Ptee, Virgin Electrical grade



2.0 Environment specifications		
2.1	Operation Temp.	-40°C~+85°C
2.2	Storage Temp.	-65°C~+150°C
2.3	Altitude	45000 ft
2.4	Vibration	10g rms (15 degree 2KHz)
2.5	Humidity	100% RH at 35c, 95%RH at 40 deg c
2.6	Shock	20G for 11msec

3.0 Electrical Specifications								
Part Number	Freq. (GHz)	CW Power (W)	IL (dB)	Ripple (dB)	VSWR	Amplitude Balance	Phrase Balance	Isolation
RFHB08M09MVU	0.80-0.96	1200	≤0.3	±0.2	≤1.25	3 ±0.35 dB	±3°	≥20
RFHB17M19MVU	1.71-1.88							
RFHB19M02GVU	1.92-2.17							
RFHB02G02GVU	2.00-2.15							

PAGE 1 OF 1		DATE	Oct 5 2006
 ULTRA HIGH POWER 3dB HYBRID www.rflambda.com		DESIGN	RFPC
		ASSEMBLY REVISION	VS4A2
		ASSEMBLY NAME	RFLVR07
		DRAWING NUMBER	D05-2
RF-LAMBDA	SIZE LT	SHEETS	1 OF 1