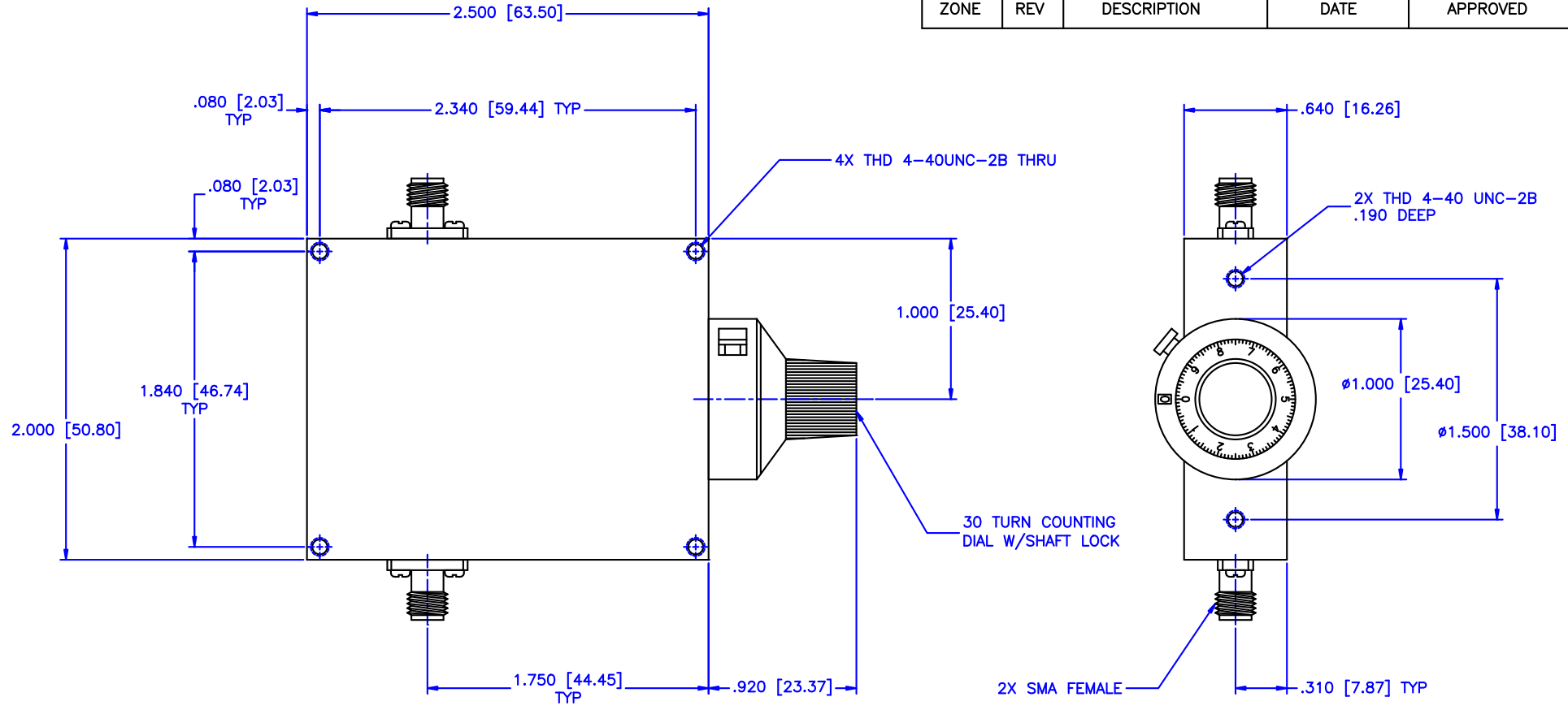


REVISIONS				
ZONE	REV	DESCRIPTION	DATE	APPROVED



SPECIFICATION:

Frequency Range: 2.8–6.5 GHz
 Attenuation: 20dB
 Insertion Loss: 0.5 Max.
 VSWR: 1.50:1 Max.
 Flatness: ±0.5 dB
 RF Power: 5W Average, 3kW Peak
 Operating Temperature: –55°C to +110°C

MATERIAL:		MCLI MICROWAVE COMMUNICATIONS LABORATORIES INC. 7255 30TH AVE. N. SAINT PETERSBURG, FL 33710 TEL: (727) 344-6254 FAX: (727) 381-6116 http://WWW.MCLI.COM	SCALE:		N/A
DRAWN: Paul DeLoach			DRAWING TITLE:		CONTINUOUSLY VARIABLE ATTENUATOR WITH DIAL
DATE: 02-09-2001		TOLERANCES		PART NO. CA18-20/D	
APPROVED: T. Nguyen		IN (INCHES) OR [mm] (MILLIMETERS) FRACTIONS: ± 1/64 DECIMALS: ±.01 ±.005 ANGLE: ±1/2°		CAGE CODE: 0D2L5	
THIRD ANGLE PROJECTION				SIZE: A REV: N/A DWG NO. 85462 DO NOT SCALE THE DRAWING	