

SSMC PLUG CRIMP RG316

SC8860

SPECIFICATIONS

ELECTRICAL

FREQUENCY: 0-12.4 GHZ

VSWR: 1.25 + 0.02f(GHz) MAX

IMPEDANCE: 50 OHMS

INSULATION RESISTANCE: 1000Mohm MIN.

MECHANICAL DURABILITY: 500 CYCLES

MECHANICAL

CENTER CONTACT: Au PLATED BeCu

BODY: Au PLATED BeCu

INSULATOR: PTFE

COUPLING NUT: Au PLATED BRASS

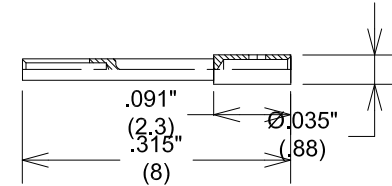
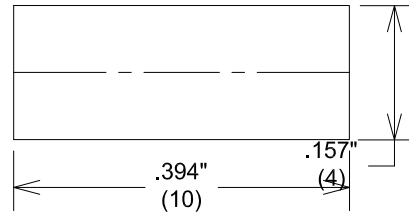
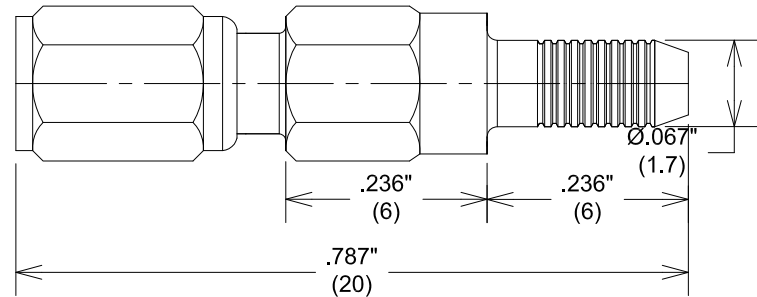
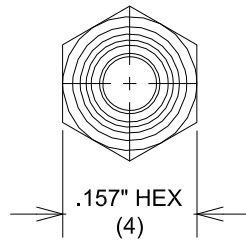
PIPE: Ni PLATED BRASS

OPERATING TEMPERATURE: -45°C to + 120°C

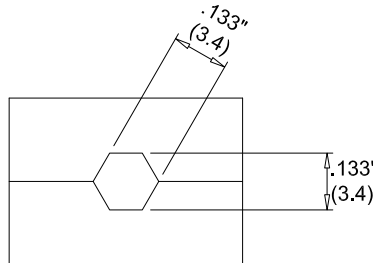
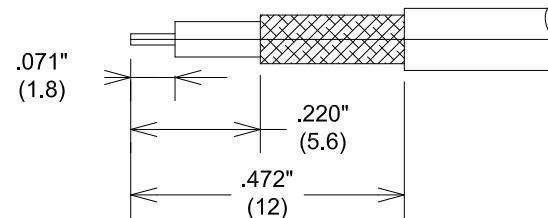
ROHS COMPLIANT

NOTE:

ASSEMBLY STOPPER SC8860-ASSY
STOPPER IS REQUIRED FOR PROPER
ASSEMBLY.



STRIPPING DIMENSIONS



RECOMMENDED
CRIMP TOOL

FAIRVIEW MICROWAVE INC.

ALLEN, TX 75013 WWW.FAIRVIEWMICROWAVE.COM

TITLE

SSMC PLUG CRIMP RG316

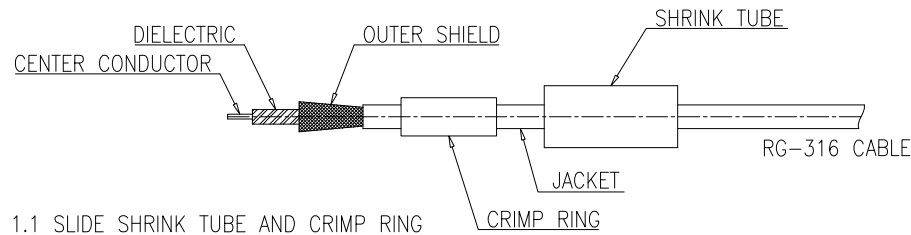
SIZE	CAGE CODE	DWG NO	REV
A	3FKR5	SC8860	B
SCALE		SHEET	

ALL DIMENSIONS IN inches(mm) Typical

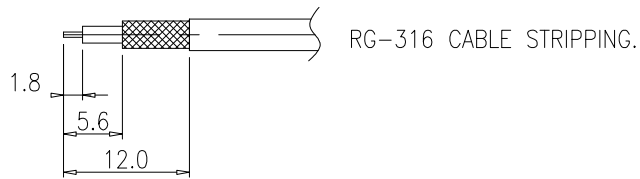
SSMC PLUG CRIMP RG316 ASSEMBLY INSTRUCTIONS

SC8860 INSTRUCTIONS

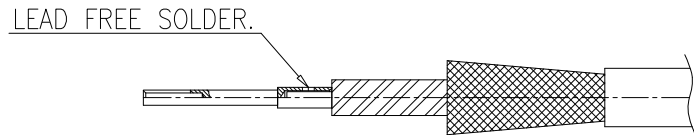
STEP 1. STRIP THE CABLE



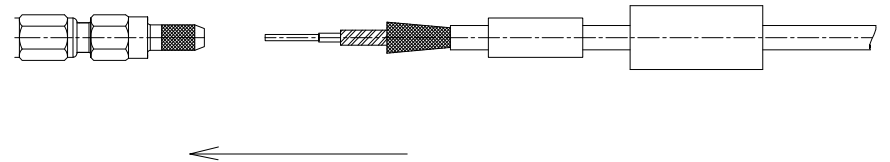
- 1.1 SLIDE SHRINK TUBE AND CRIMP RING ONTO CABLE.
- 1.2 STRIP CABLE JACKET, OUTER SHIELD, DIELECTRIC AND CENTER CONDUCTOR TO DIMENSIONS SHOWN
- 1.3 FLARE OUTER SHIELD AS SHOWN.



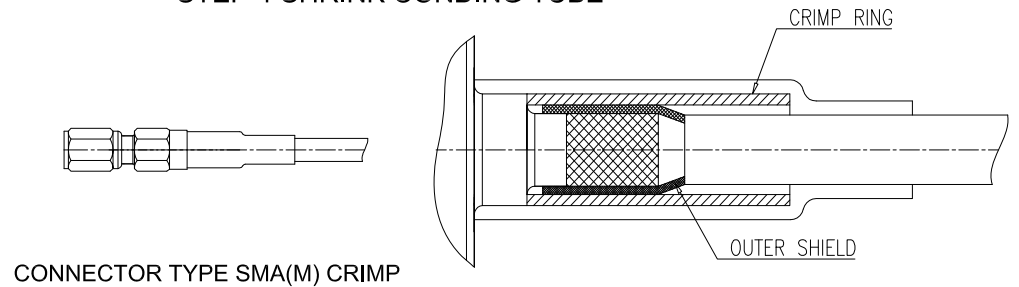
STEP 2. PIN SOLDERING



STEP 3. ASSEMBLE THE CONNECTOR BODY



STEP 4 SHRINK CONDING TUBE



FAIRVIEW MICROWAVE INC.

ALLEN, TX 75013 WWW.FAIRVIEWMICROWAVE.COM

TITLE

SSMC PLUG CRIMP RG316
ASSEMBLY INSTRUCTIONS

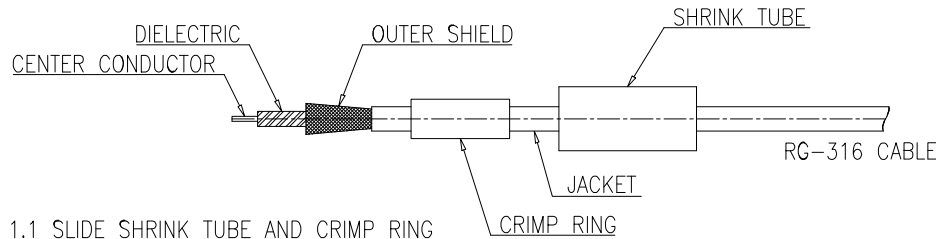
SIZE	CAGE CODE	DWG NO	REV
A	3FKR5	SC8860 INSTRUCTIONS	B
SCALE		SHEET	

ALL DIMENSIONS IN inches(mm) Typical

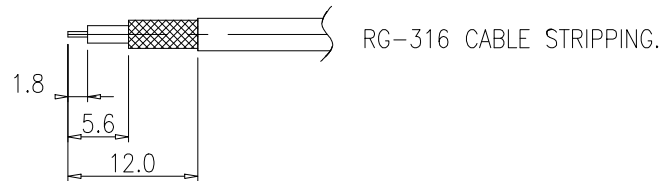
SSMC PLUG CRIMP RG316 ASSEMBLY INSTRUCTIONS

SC8860 INSTRUCTIONS

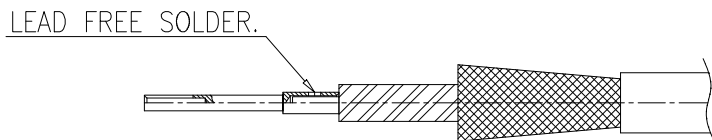
STEP 1. STRIP THE CABLE



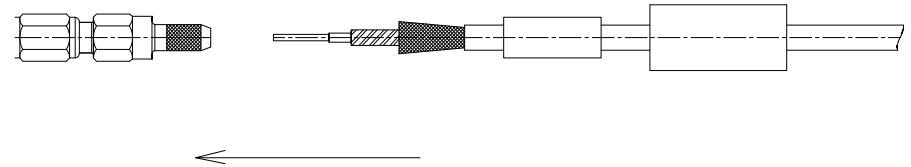
- 1.1 SLIDE SHRINK TUBE AND CRIMP RING ONTO CABLE.
- 1.2 STRIP CABLE JACKET, OUTER SHIELD, DIELECTRIC AND CENTER CONDUCTOR TO DIMENSIONS SHOWN
- 1.3 FLARE OUTER SHIELD AS SHOWN.



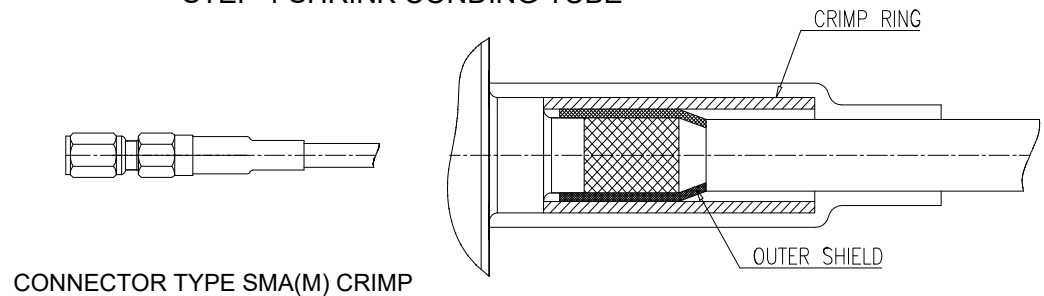
STEP 2. PIN SOLDERING



STEP 3. ASSEMBLE THE CONNECTOR BODY



STEP 4 SHRINK CONDING TUBE



FAIRVIEW MICROWAVE INC.

ALLEN, TX 75013 WWW.FAIRVIEWMICROWAVE.COM

TITLE

**SSMC PLUG CRIMP RG316
ASSEMBLY INSTRUCTIONS**

SIZE	CAGE CODE	DWG NO	REV
A	3FKR5	SC8860 INSTRUCTIONS	B
SCALE		SHEET	

ALL DIMENSIONS IN inches(mm) Typical