



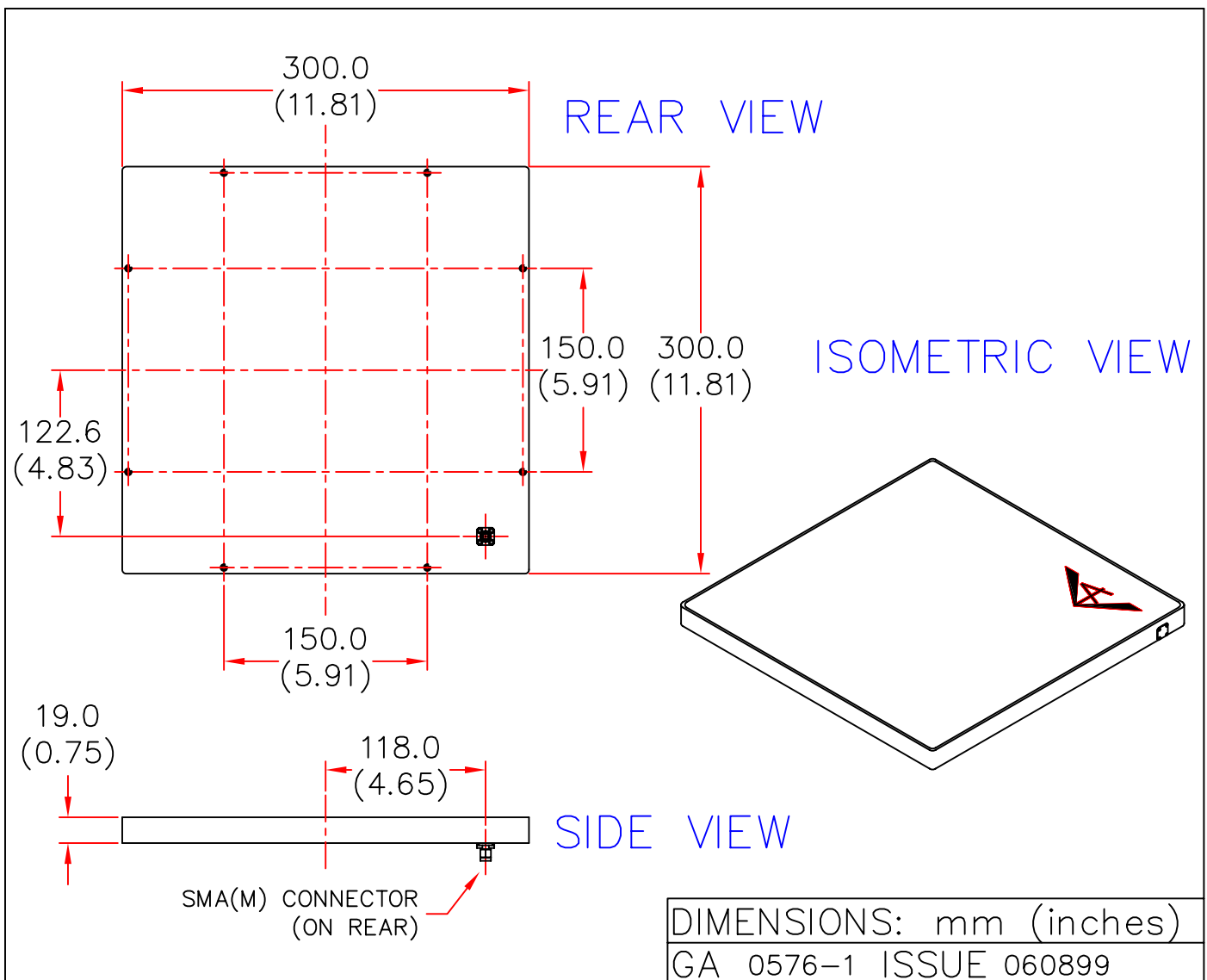
EUROPEAN ANTENNAS



FLAT PLATE ANTENNA

MODEL: FPA13-15R-SMA/576

FREQUENCY: 1.45 – 1.60 GHz	GAIN: 13 dBiC
POLARISATION: R.H. Circular	BEAMWIDTH: 40° x 40°
AXIAL RATIO: 3dB Typ	VSWR: 1.5:1
POWER RATING: 10W	FRONT TO BACK: 20dB
TEMPERATURE: -20°C to +50°C	MASS: 1.7Kg/3.74lbs
RADOME: Glass Fibre/Gloss White	WIND LOADING: 14.6Kg/32.1lbs @100mph



EUROPEAN ANTENNAS LTD.

TEL: +44 (0)1638 731888

LAMBDA HOUSE, CHEVELEY,
NEWMARKET, SUFFOLK, CB8 9RG,
UNITED KINGDOM.

FAX: +44 (0)1638 731999

European Antennas Ltd. has a policy of continuous development and therefore stress that the data contained on this sheet should be used for guidance only.