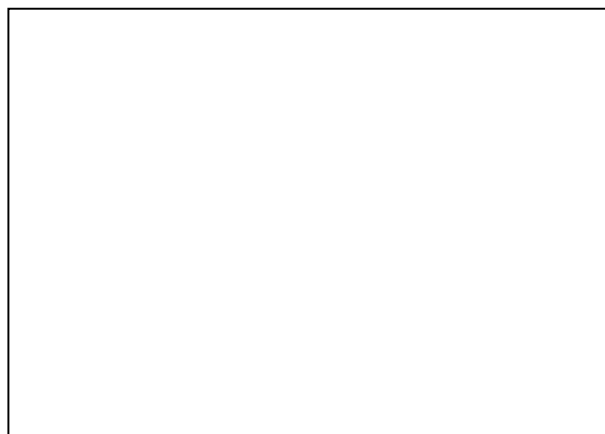


**Key Features:**

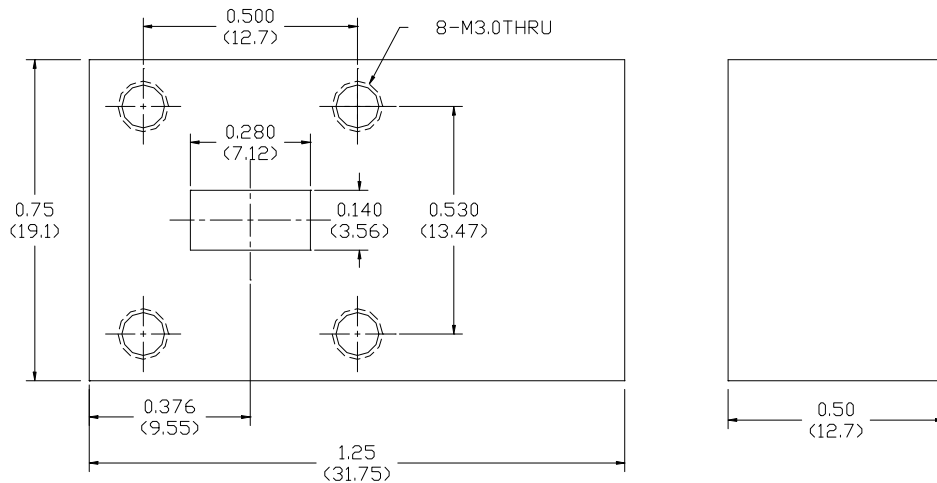
- Designed for applications in the frequency range between 26.5~40.0GHz with bandwidth up to 3GHz
- WR-28 waveguide, connect to UG-599/U flange
- Power handling >10Watts CW forward, >2Watts CW Reverse
- Small size, low cost
- Customer specify center frequency and bandwidth



**Electrical Specifications**

| Part No.      | Freq Range MHz | Insertion Loss, dB | Reverse Isolation, dB | VSWR  | Forward Power, Watts | Reverse Power, Watts | Temp. Range, °C |
|---------------|----------------|--------------------|-----------------------|-------|----------------------|----------------------|-----------------|
| F3336-2800-04 | 27.5~28.5      | 0.4 Max            | ≥ 20                  | ≤1.2  | ≥ 10                 | ≥ 2                  | -40 ~ +85       |
| F3336-2850-04 | 28.0~29.0      | 0.4 Max            | ≥ 20                  | ≤1.2  | ≥ 10                 | ≥ 2                  | -40 ~ +85       |
| F3336-2950-10 | 28.0~31.0      | 0.5 Max            | ≥ 20                  | ≤1.2  | ≥ 10                 | ≥ 2                  | -25 ~ +70       |
| F3336-2950-03 | 29.0~30.0      | 0.4 Max            | ≥ 20                  | ≤1.2  | ≥ 10                 | ≥ 2                  | -40 ~ +85       |
| F3336-3000-07 | 29.0~31.0      | 0.5 Max            | ≥ 20                  | ≤1.2  | ≥ 10                 | ≥ 2                  | -25 ~ +70       |
| F3336-3050-10 | 29.0~32.0      | 0.5 Max            | ≥ 20                  | ≤1.2  | ≥ 10                 | ≥ 2                  | -25 ~ +70       |
| F3336-3050-03 | 30.0~31.0      | 0.4 Max            | ≥ 20                  | ≤1.2  | ≥ 10                 | ≥ 2                  | -40 ~ +85       |
| F3336-3350-03 | 33.0~34.0      | 0.4 Max            | ≥ 21                  | ≤1.2  | ≥ 10                 | ≥ 2                  | -30 ~ +70       |
| F3336-3500-06 | 34.0~36.0      | 0.5 Max            | ≥ 20                  | ≤1.2  | ≥ 10                 | ≥ 2                  | -25 ~ +70       |
| F3336-3500-03 | 34.5~35.5      | 0.4 Max            | ≥ 21                  | ≤1.2  | ≥ 10                 | ≥ 2                  | -40 ~ +80       |
| F3336-3600-03 | 35.5~36.5      | 0.4 Max            | ≥ 21                  | ≤1.2  | ≥ 10                 | ≥ 2                  | -30 ~ +70       |
| F3336-3650-08 | 35.0~38.0      | 0.5 Max            | ≥ 20                  | ≤1.25 | ≥ 10                 | ≥ 2                  | -25 ~ +70       |
| F3336-3700-08 | 35.5~38.5      | 0.5 Max            | ≥ 20                  | ≤1.25 | ≥ 10                 | ≥ 2                  | -25 ~ +70       |
| F3336-3830-03 | 37.8~38.8      | 0.4 Max            | ≥ 21                  | ≤1.2  | ≥ 10                 | ≥ 2                  | -30 ~ +70       |
| F3336-3850-08 | 37.0~40.0      | 0.5 Max            | ≥ 20                  | ≤1.25 | ≥ 10                 | ≥ 2                  | -25 ~ +70       |

Mechanical Structure:



All units in inches

Ordering Information:

F3336-XXXX-XX  
          ↓          ↓  
          Bandwidth, XX%,  
          ↓  
          Frequency XX.XX GHz,