

Waveguide Isolators

Part Number: KTWI180-15A

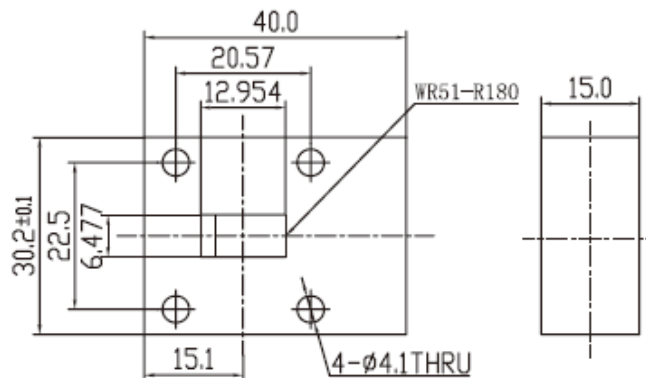
Main Features:

- Broad Frequency Range: 14.5 GHz -22.0GHz
- High Isolation, Low Insertion Loss, Small Size
- Wide Operating Temperature: -40°C~+80°C
- Commercial, Military and Space Applications

Electrical Specifications at Room Temperature:

| Part Number | Freq. Range (GHz) | Bandwidth Max. (MHz) | Insertion Loss Max. (dB) | Isolation Min. (dB) | VSWR Max. | Waveguide Type |
|-------------|-------------------|----------------------|--------------------------|---------------------|-----------|----------------|
| KTWI180-15A | 14.5 - 22.0 | 1000 | 0.3 | 23 | 1.20 | WR51 |
| KTWI180-15A | 14.5 - 22.0 | 2000 | 0.4 | 20 | 1.25 | WR51 |

Mechanical Dimensions (mm):



HOW TO ORDER

