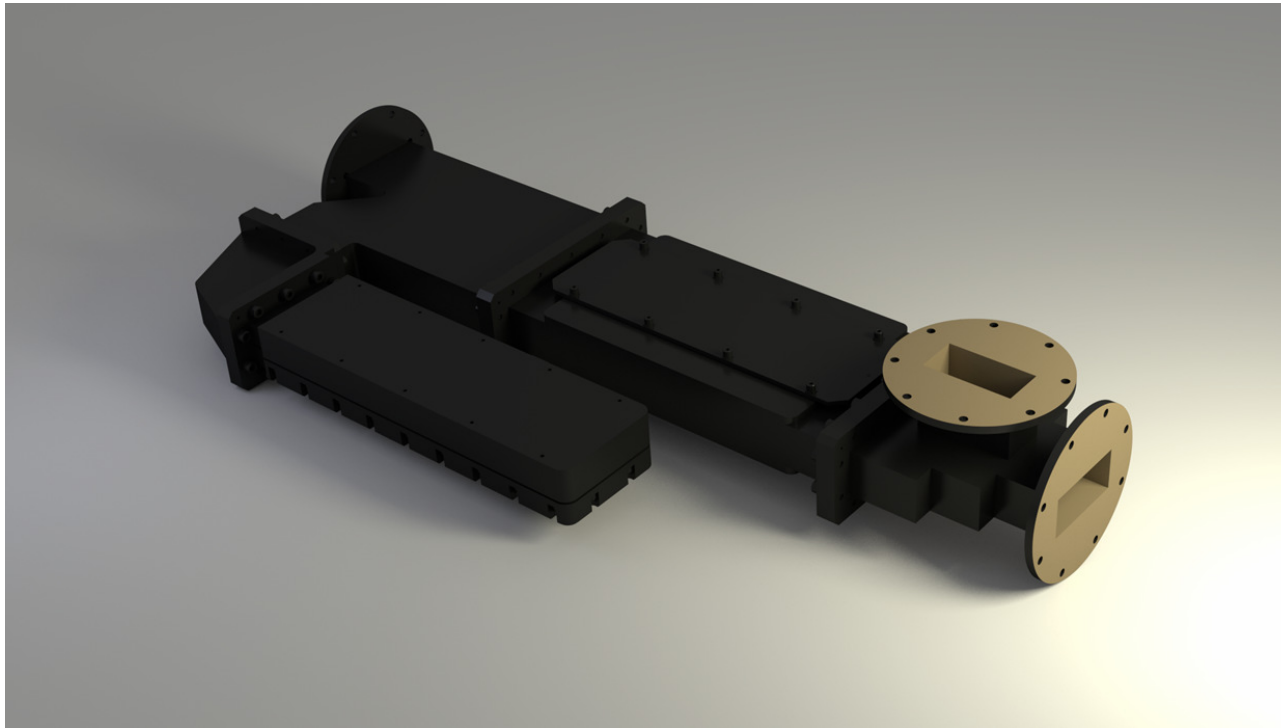


S-Band Differential Phase-shift Circulator



Specification

Operating Frequency	S-Band
Bandwidth	100MHz TYP
Average Power	Up to 10kW
Peak Power	Up to 7.5MW
Insertion Loss (dB)	0.3 max
Isolation (dB)	25 min
Return Loss (dB)	23 min
Waveguide Size	WR284
Operating Temp	-40 to +80C

- Radar, Medical, Scientific Applications
- Can be configured as 2, 3, or 4 available ports, with other ports loaded
- Can be configured with bends to suit customer outline
- Average power rating dependant on cooling options