

Surface Mount Low Pass Filter

LPF-B0R35+

50Ω DC to 0.35 MHz

Maximum Ratings

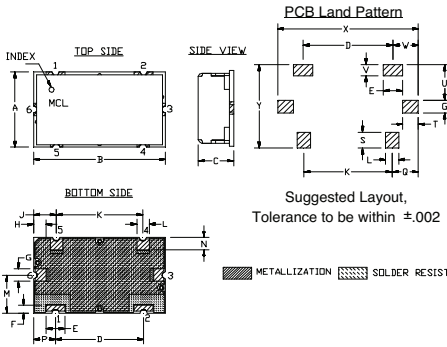
Operating Temperature	-40°C to 85°C
Storage Temperature	-55°C to 100°C
RF Power Input	0.25W Max

Permanent damage may occur if any of these limits are exceeded.

Pin Connections

INPUT	1
OUTPUT	2
GROUND	3, 4, 5, 6

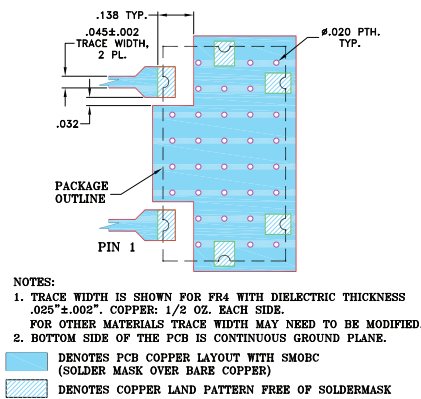
Outline Drawing



Outline Dimensions (inch/mm)

A	B	C	D	E	F	G	H	J	K	L	M
.472"	.826"	.220"	.561"	.118"	.047"	.078"	.076"	.142"	.543"	.078"	.236"
11.99	20.98	5.59	14.00	3.00	1.19	1.98	1.92	3.61	13.79	1.98	5.99
N	P	Q	S	T	U	V	W	X	Y	wt	
.079"	.138"	.162"	.098"	.096"	.217"	.067"	.157"	.866"	.512"	grams	
2.01	3.51	4.11	2.49	2.44	5.51	1.70	3.99	22.00	13.00	6.0	

Demo Board MCL P/N: TB-400+ Suggested PCB Layout (PL-247)

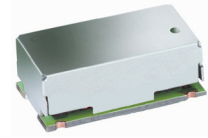


Features

- high rejection
- good VSWR, 1.2:1 typ. @ passband
- shielded case
- aqueous washable

Applications

- CDMA
- cellular Infrastructure
- wireless communications
- receivers / transmitters



CASE STYLE: HZ1198
PRICE: \$9.35 ea. QTY (1-9)

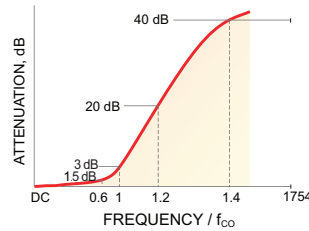
+RoHS Compliant

The +Suffix identifies RoHS Compliance. See our web site for RoHS Compliance methodologies and qualifications

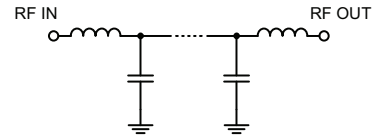
Low Pass Filter Electrical Specifications (T_{AMB} = 25°C)

PASSBAND (MHz)	f _{co} , MHz Nom.	STOPBAND (MHz)		VSWR (:1)	
		(Loss > 20dB)	(Loss > 40dB)	Passband Typ.	Stopband Typ.
DC - 0.35	0.57	0.70 - 0.79	0.79 - 1000	1.2	20

Typical Frequency Response

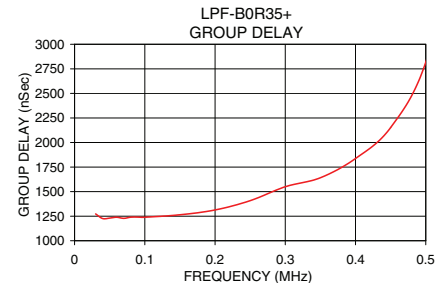
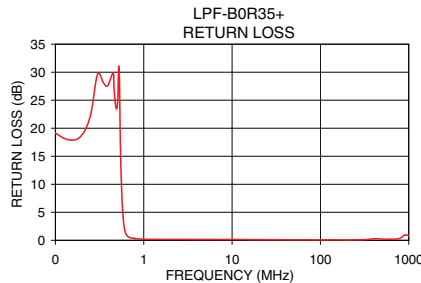
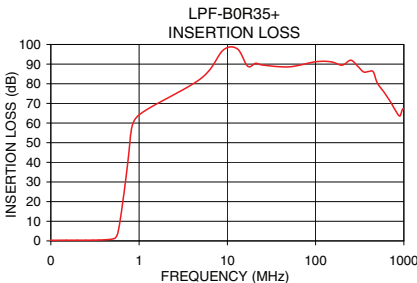


Functional Schematic



Typical Performance Data at 25°C

Frequency (MHz)	Insertion Loss (dB)		Return Loss (dB)	Frequency (MHz)	Group Delay (nSec.)
	\bar{x}	σ			
0.03	0.35	0.02	25.99	0.03	1272.71
0.10	0.33	0.01	18.77	0.05	1230.57
0.20	0.35	0.01	18.25	0.07	1227.66
0.30	0.39	0.01	31.07	0.09	1240.17
0.35	0.46	0.01	34.46	0.11	1244.48
0.39	0.54	0.01	32.08	0.13	1249.43
0.54	1.59	0.15	14.88	0.17	1279.00
0.57	3.62	0.56	5.68	0.20	1313.11
0.59	6.54	0.85	2.82	0.23	1366.08
0.62	12.51	1.01	1.20	0.25	1408.28
0.66	21.26	1.04	0.61	0.27	1438.54
0.70	29.95	1.08	0.44	0.30	1549.84
0.79	51.11	1.62	0.29	0.33	1579.06
1.00	64.18	1.23	0.20	0.35	1641.22
5.00	82.63	2.99	0.14	0.37	1695.07
100.00	91.19	6.08	0.07	0.40	1836.86
500.00	80.42	1.93	0.20	0.45	2152.05
1000.00	67.27	1.21	0.91	0.50	2816.55



For detailed performance specs & shopping online see web site

P.O. Box 350166, Brooklyn, New York 11235-0003 (718) 934-4500 Fax (718) 332-4661 The Design Engineers Search Engine Provides ACTUAL Data Instantly at minicircuits.com

Notes: 1. Performance and quality attributes and conditions not expressly stated in this specification sheet are intended to be excluded and do not form a part of this specification sheet. 2. Electrical specifications and performance data contained herein are based on Mini-Circuit's applicable established test performance criteria and measurement instructions. 3. The parts covered by this specification sheet are subject to Mini-Circuits standard limited warranty and terms and conditions (collectively, "Standard Terms"); Purchasers of this part are entitled to the rights and benefits contained therein. For a full statement of the Standard Terms and the exclusive rights and remedies thereunder, please visit Mini-Circuits' website at www.minicircuits.com/MCLStore/terms.jsp.

REV. OR
M119635
EDR-9416U
LPF-B0R35+
URJ/RAV
121014
Page 1 of 1