

Passband 1: DC to 2100 MHz

## Diplexer (LP/HP)

Passband 1 Isolation: 40 dB

Passband 2: 3200 to 6500 MHz

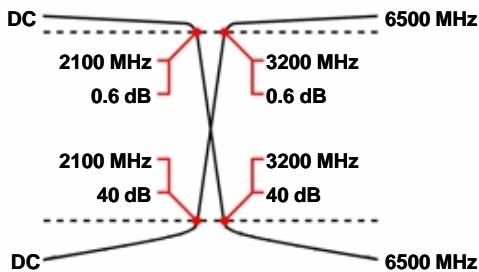
WDK5+5-DC-2100/3200-6500-40S3

Passband 2 Isolation: 40 dB

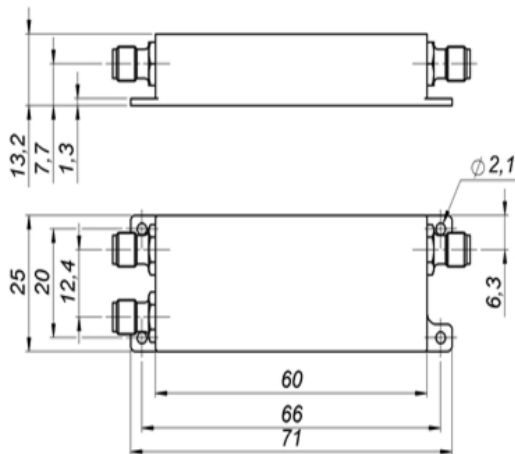
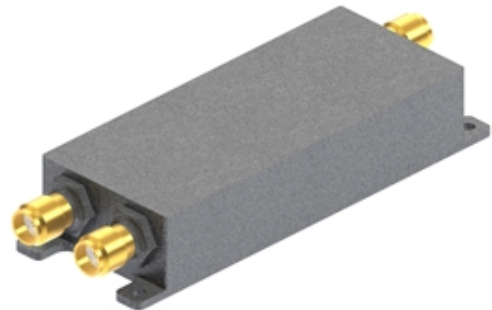
### Specifications

	Band 1 (Lowpass)	Band 2 (Highpass)
Passbands:	DC to 2100 MHz	3200 to 6500 MHz
Passband Insertion Loss:	0.6 dB max.	0.6 dB max.
Passband Return Loss:	20 dB min.	12 dB min.
Stopbands:	3200-6500 MHz	DC-2100 MHz
Stopband Attenuation:	40 dB min.	40 dB min.
Operating Temperature:	15 °C to 45 °C	
Power Handling:	max. 10 W CW into a 2:1 VSWR (Please see our <a href="#">warranty</a> in this regard)	
Dimensions (L x W x H):	60 x 25 x 13.2 mm (plus connectors and flanges)	
Approx. Weight:	0.06 kg	
Mounting Provision:	5.5 mm flanges on both ends	
Connector Common:	SMA Female	
Connector Band 1:	SMA Female	
Connector Band 2:	SMA Female	

### Typical Performance



### 5+5 Section LC Design



©2015 Wainwright Instruments. All rights reserved.

### Euro Prices

(USD Prices will be quoted for US-based customers only)

1 - 4 pcs:	€ 935
5 - 9 pcs:	€ 842
10 - 24 pcs:	€ 757

### Delivery Terms

FCA Andechs (free carrier) according to **Incoterms 2010**  
 In Deutschland liefern wir frachtfrei gemäß CPT **Incoterms 2010** (unversichert).  
 Regarding payment terms and warranty see [Terms and Conditions](#).  
**Delivery time:** normally 3 to 4 weeks - depending on quantity ordered and on our work load.

Customer is responsible for observing all applicable export laws in regard to filter application and location of end user



**Wainwright Instruments GmbH**  
[www.wainwright-filters.com](http://www.wainwright-filters.com)

Tel: +49 8152 918230  
 Fax: +49 8152 918255  
[info@wainwright-filters.com](mailto:info@wainwright-filters.com)