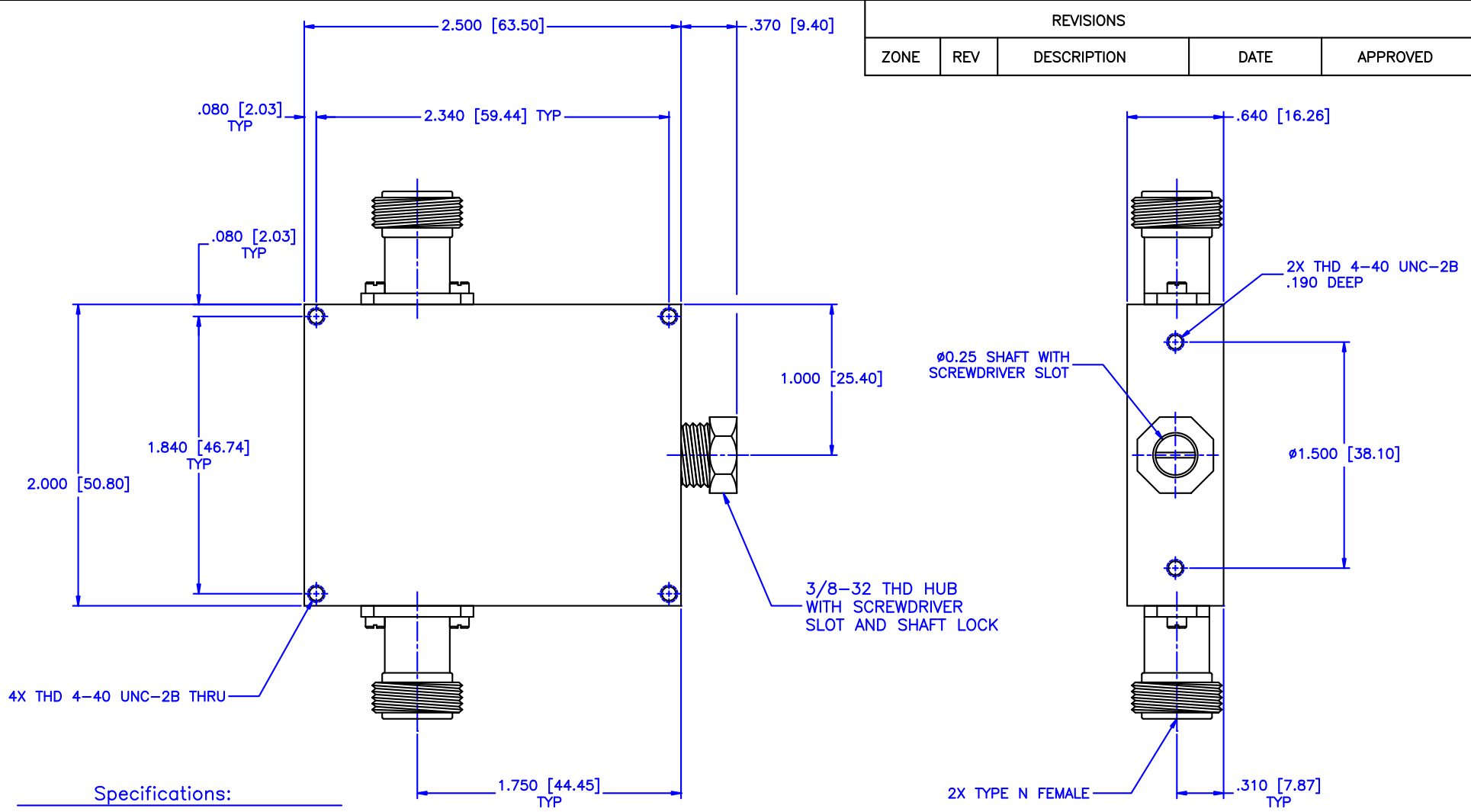


REVISIONS				
ZONE	REV	DESCRIPTION	DATE	APPROVED



Specifications:

Frequency Range: 1-8 GHz
 Attenuation: 30dB
 Insertion Loss: 0.5 Max.
 VSWR: 1.50:1
 RF Power: 7W Average, 3kW Peak

Environmental:

Temperature range: -55°C to +110°C
 Shock: 15 G's, 11mS, 1/2 sine
 Vibration: 3 G's overall
 Altitude: 40,000 ft. Survival 25,000ft Operating

MATERIAL:			MICROWAVE COMMUNICATIONS LABORATORIES INC. 7255 30TH AVE. N. SAINT PETERSBURG, FL 33710 TEL: (727) 344-6254 FAX: (727) 381-6116 http://WWW.MCLI.COM		SCALE:	N/A
UNLESS OTHERWISE SPECIFIED: TOLERANCES IN (INCHES) OR [mm] (MILLIMETERS) FRACTIONS: ± 1/64 DECIMALS: ± 0.01 ± 0.005 ANGLE: ± 1/2°			DRAWING TITLE:		SHEET:	
DRAWN:		DATE:		CONTINUOUSLY VARIABLE ATTENUATOR		
Paiboon Luekhamhan		02-08-2011		PART NO.		
APPROVED:		DATE:		CVA17-30/NF		
T. Nguyen		02-08-2011		PRT NO.		
THIRD ANGLE PROJECTION				CAGE CODE:	SIZE:	REV:
				OD2L5	A	N/A
				DO NOT SCALE THE DRAWING		DWG NO.
						85389