

Surface Mount Bandpass Filter

BPF-B63+

50Ω 61 to 65 MHz

The Big Deal

- Narrow bandwidth (3.2%)
- High rejection (55 dB typical)
- Good VSWR (1.3:1 typical)
- Miniature shielded package



CASE STYLE: HZ1198

Product Overview

The BPF-B63+ is a narrow-band bandpass filter fabricated using SMT technology, It is enclosed in HZ1198 package. Covering a passband of 63 MHz \pm 2 MHz, these units offer good matching within the passband and high rejection. This unit uses a miniature high Q capacitors and wire welded inductors for high reliability. In addition it has repeatable performance across production lots and consistent performance across temperature.

Key Features

Feature	Advantages
Flat group delay over pass band (18ns typical)	Flat group delay ensures that the signal distortion is very less.
Good VSWR, 1.3:1 typical over passband	This provides well matched input and output ports.
Sharp shape factor	Sharp shape factor helps in adjacent channel rejection and hence increased selectivity.
More than 50 dB rejection up to 2300MHz	This enables the filter to attenuate spurious signals and reject harmonics for broad band of frequency.



For detailed performance specs & shopping online see web site

P.O. Box 350166, Brooklyn, New York 11235-0003 (718) 934-4500 Fax (718) 332-4661 The Design Engineers Search Engine  Provides ACTUAL Data Instantly at minicircuits.com

Notes: 1. Performance and quality attributes and conditions not expressly stated in this specification sheet are intended to be excluded and do not form a part of this specification sheet. 2. Electrical specifications and performance data contained herein are based on Mini-Circuit's applicable established test performance criteria and measurement instructions. 3. The parts covered by this specification sheet are subject to Mini-Circuits standard limited warranty and terms and conditions (collectively, "Standard Terms"); Purchasers of this part are entitled to the rights and benefits contained therein. For a full statement of the Standard Terms and the exclusive rights and remedies thereunder, please visit Mini-Circuits' website at www.minicircuits.com/MCLStore/terms.jsp.

Surface Mount Bandpass Filter

BPF-B63+

50Ω 61 to 65 MHz



CASE STYLE: HZ1198
PRICE: \$29.95 ea. QTY (1-9)

Features

- Excellent VSWR, 1.3:1 typical in passband
- Flat group delay over passband
- High rejection, 55 dB typical
- Sharp insertion loss roll-off
- Shielded case
- Aqueous washable

Applications

- Harmonic rejection
- Radio communications
- ILS / Localiser
- Transmitters / receivers

Electrical Specifications at 25°C

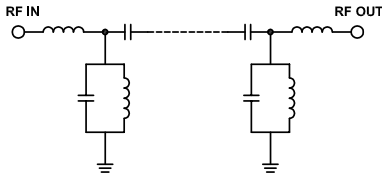
Parameter	F#	Frequency (MHz)	Min.	Typ.	Max.	Unit
Pass Band	Center Frequency	—	—	63	—	MHz
	Insertion Loss	F1-F2	61-65	—	3.6	5 dB
	VSWR	F1-F2	61-65	—	1.3	1.7 :1
Stop Band, Lower	Insertion Loss	DC-F3	DC-55	20	31	dB
	VSWR	DC-F3	DC-55	—	36	— :1
Stop Band, Upper	Insertion Loss	F4-F5	72-2800	20	31	dB
	VSWR	F4-F5	72-2800	—	17	— :1

Maximum Ratings

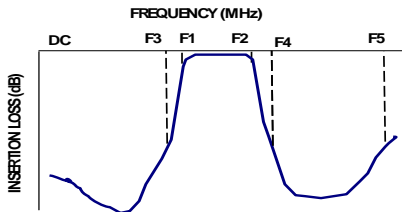
Operating Temperature	-40°C to 85°C
Storage Temperature	-55°C to 100°C
RF Power Input	0.11W max.

Permanent damage may occur if any of these limits are exceeded.

Functional Schematic



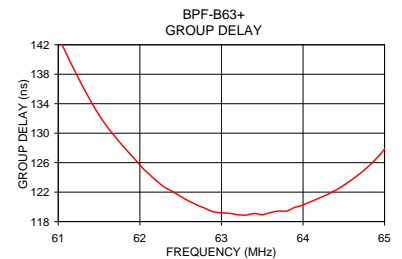
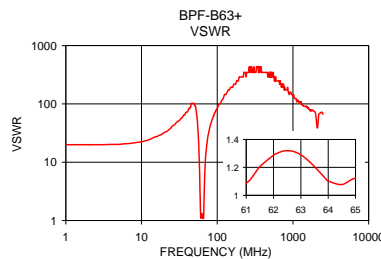
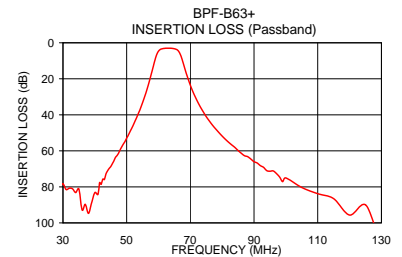
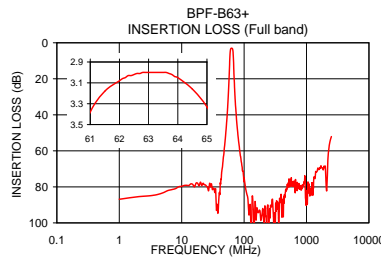
Typical Frequency Response



Frequency (MHz)	Insertion Loss (dB)	VSWR (:1)	Frequency (MHz)	Group Delay (nsec)
1.0	86.87	19.98	61.0	143.12
51.0	49.57	91.43	61.5	132.47
55.0	33.26	44.55	62.8	119.80
58.0	15.57	10.02	62.0	125.69
59.0	8.90	4.00	62.2	123.57
61.0	3.38	1.09	62.4	122.09
62.0	3.08	1.29	62.5	121.41
63.0	3.00	1.29	62.6	120.80
64.0	3.05	1.10	62.8	119.80
65.0	3.33	1.12	63.0	119.19
67.0	7.08	2.28	63.2	118.94
68.0	12.70	4.95	63.4	119.10
70.0	23.55	11.46	63.5	118.94
72.0	31.75	17.75	63.6	119.23
78.0	47.94	34.75	63.7	119.43
100.0	75.04	82.73	63.8	119.43
500.0	80.34	347.44	63.9	119.94
1000.0	88.82	133.63	64.0	120.27
2000.0	68.52	66.82	64.5	122.94
2800.0	45.50	57.91	65.0	127.87

+ RoHS compliant in accordance with EU Directive (2002/95/EC)

The +Suffix has been added in order to identify RoHS Compliance. See our web site for RoHS Compliance methodologies and qualifications.



Mini-Circuits®
ISO 9001 ISO 14001 AS 9100 CERTIFIED

P.O. Box 350166, Brooklyn, New York 11235-0003 (718) 934-4500 Fax (718) 332-4661 The Design Engineers Search Engine Provides ACTUAL Data Instantly at minicircuits.com

IF/RF MICROWAVE COMPONENTS

For detailed performance specs & shopping online see web site

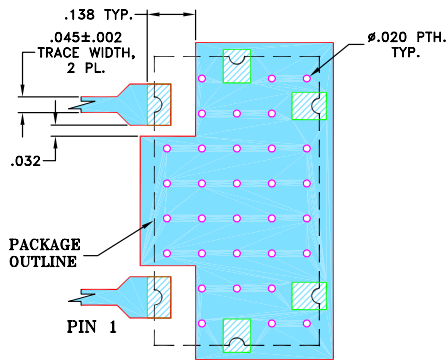
Notes: 1. Performance and quality attributes and conditions not expressly stated in this specification sheet are intended to be excluded and do not form a part of this specification sheet. 2. Electrical specifications and performance data contained herein are based on Mini-Circuit's applicable established test performance criteria and measurement instructions. 3. The parts covered by this specification sheet are subject to Mini-Circuits standard limited warranty and terms and conditions (collectively, "Standard Terms"); Purchasers of this part are entitled to the rights and benefits contained therein. For a full statement of the Standard Terms and the exclusive rights and remedies thereunder, please visit Mini-Circuits' website at www.minicircuits.com/MCLStore/terms.jsp.

REV. OR
M130715
BPF-B63+
EDR-10095U
RAV/URJ/NY
110311
Page 2 of 3

Pad Connections

INPUT	1
OUTPUT	2
GROUND	3,4,5,6

Demo Board MCL P/N: TB-400
Suggested PCB Layout (PL-247)

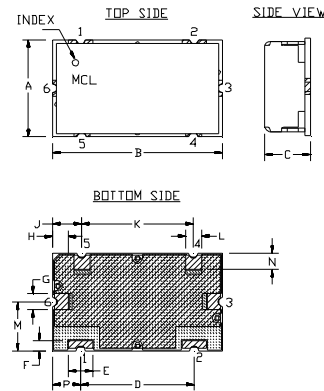


NOTES:

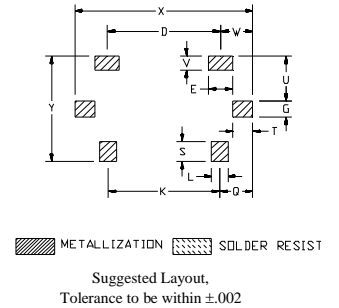
- TRACE WIDTH IS SHOWN FOR FR4 WITH DIELECTRIC THICKNESS .025"±.002". COPPER: 1/2 OZ. EACH SIDE.
 FOR OTHER MATERIALS TRACE WIDTH MAY NEED TO BE MODIFIED.
- BOTTOM SIDE OF THE PCB IS CONTINUOUS GROUND PLANE.

- DENOTES PCB COPPER LAYOUT WITH SMOBC (SOLDER MASK OVER BARE COPPER)
- DENOTES COPPER LAND PATTERN FREE OF SOLDERMASK

Outline Drawing



PCB Land Pattern



Outline Dimensions (inch / mm)

A	B	C	D	E	F	G	H	J	K	L	M
.472	.826	.220	.551	.118	.047	.078	.076	.142	.543	.078	.236
11.99	20.98	5.59	14.00	3.00	1.19	1.98	1.93	3.61	13.79	1.98	5.99
N	P	Q	S	T	U	V	W	X	Y	wt	
.079	.138	.162	.098	.096	.217	.067	.157	.866	.512	grams	
2.01	3.51	4.11	2.49	2.44	5.51	1.70	3.99	22.00	13.00	grams	6.0