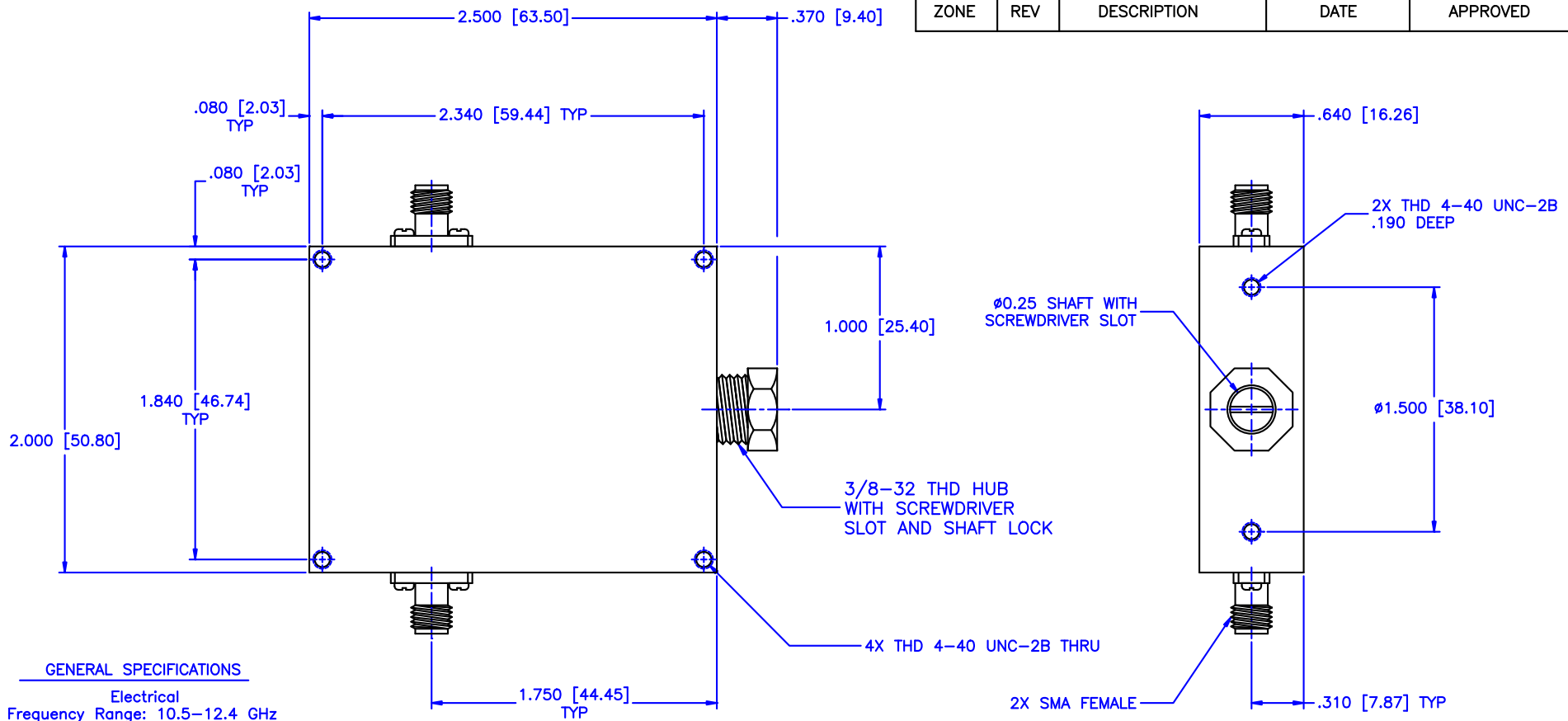


REVISIONS				
ZONE	REV	DESCRIPTION	DATE	APPROVED



GENERAL SPECIFICATIONS

Electrical
 Frequency Range: 10.5–12.4 GHz
 Attenuation: 10dB
 Flatness: ±0.75dB
 VSWR: 1.50:1 Max.
 Insertion Loss per Frequency Band
 to 18 GHz: 0.5dB max.
 to 26 GHz: 0.75dB max.
 to 40 GHz: 1.50dB max.
 RF Power: 7W average, 3kW peak

Mechanical
 Body: Aluminum
 Connectors: Stainless Steel
 Finish: Unique corrosion resistant 316 stainless steel epoxy coating IAW MIL-F-14072
 Weight: 5.2oz / 150gm

Environmental
 Operating Temperature: -55°C to +110 °C
 Shock: 15 G's, 11ms, 1/2 sine
 Vibration: 3 G's overall
 Altitude: 40,000ft. Survival 25,000ft Operating

MATERIAL:	
DRAWN: Paiboon Luekhamhan	DATE: 02-09-2011
APPROVED: T. Nguyen	DATE: 02-09-2011



MICROWAVE COMMUNICATIONS LABORATORIES INC.
 7255 30TH AVE. N. SAINT PETERSBURG, FL 33710
 TEL: (727) 344-6254 FAX: (727) 381-6116
 http://WWW.MCLI.COM

SCALE:	N/A
SHEET:	N/A

UNLESS OTHERWISE SPECIFIED:
 TOLERANCES
 IN (INCHES) OR [mm] (MILLIMETERS)
 FRACTIONS: ± 1/64
 DECIMALS: ±.01 ±.005
 ANGLE: ±1/2°

DRAWING TITLE:
CONTINUOUSLY VARIABLE ATTENUATOR

PART NO.
CA13-10

PROPRIETARY NOTICE:
 THE INFORMATION IN THIS DRAWING IS PROPRIETARY AND SHALL NOT BE USED OR DISCLOSED WITHOUT WRITTEN PERMISSION FROM MICROWAVE COMMUNICATIONS LABORATORIES INC. (MCLI)

CAGE CODE: OD2L5	SIZE: A	REV: N/A	DWG NO. 80647
DO NOT SCALE THE DRAWING			

