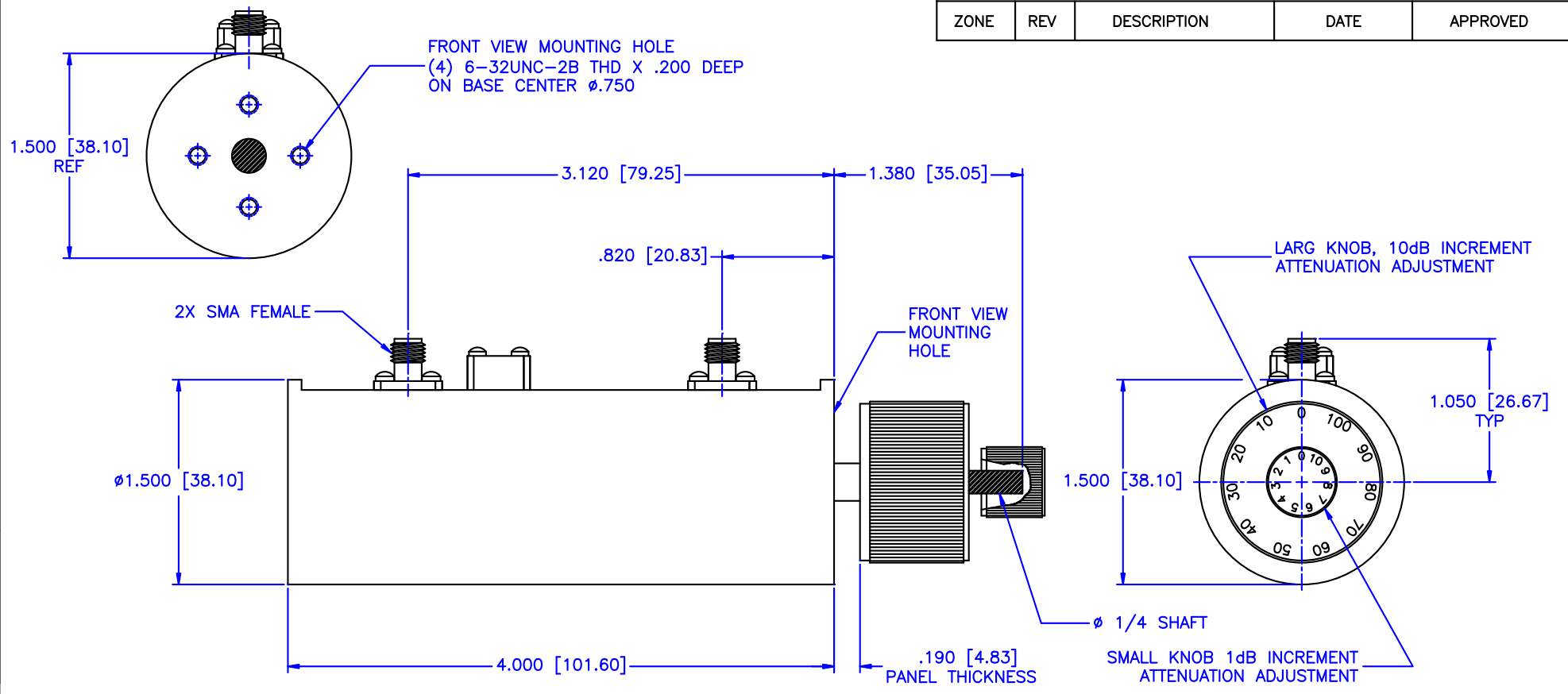


REVISIONS				
ZONE	REV	DESCRIPTION	DATE	APPROVED



Specifications:

Frequency Range: DC-2.2 GHz  
 Attenuation Range: 0-110dB (In 1dB Steps)  
 Attenuation Accuracy:  $\pm$ 0.5dB or 3%  
 Insertion Loss: 1dB Max.  
 VSWR: 1.50:1 Max.  
 RF Input Power: 2W Average, 1kW Peak

Environmental:

Temperature range: -20°C to +85°C  
 Shock: 15 G's, 11mS, 1/2 sine  
 Vibration: 3 G's overall  
 Altitude: 40,000 ft. Survival 25,000ft Operating

MATERIAL:		MICROWAVE COMMUNICATIONS LABORATORIES INC. 7255 30TH AVE. N. SAINT PETERSBURG, FL 33710 TEL: (727) 344-6254 FAX: (727) 381-6116 http://WWW.MCLI.COM		SCALE:	N/A
		UNLESS OTHERWISE SPECIFIED: TOLERANCES IN (INCHES) OR [mm] (MILLIMETERS) FRACTIONS: $\pm$ 1/64 DECIMALS: $\pm$ .01 $\pm$ .005 ANGLE: $\pm$ 1/2°		SHEET:	N/A
DRAWN: Paiboon Luekhamhan		DATE: 02-07-2011		DRAWING TITLE: DUAL CONCENTRIC ROTARY STEP ATTENUATOR	
APPROVED: T. Nguyen		DATE: 02-07-2011		PART NO. CVA26-0110/DD	
THIRD ANGLE PROJECTION		CAGE CODE:	SIZE: A	REV: N/A	DWG NO.
		0D2L5	DO NOT SCALE THE DRAWING		85370