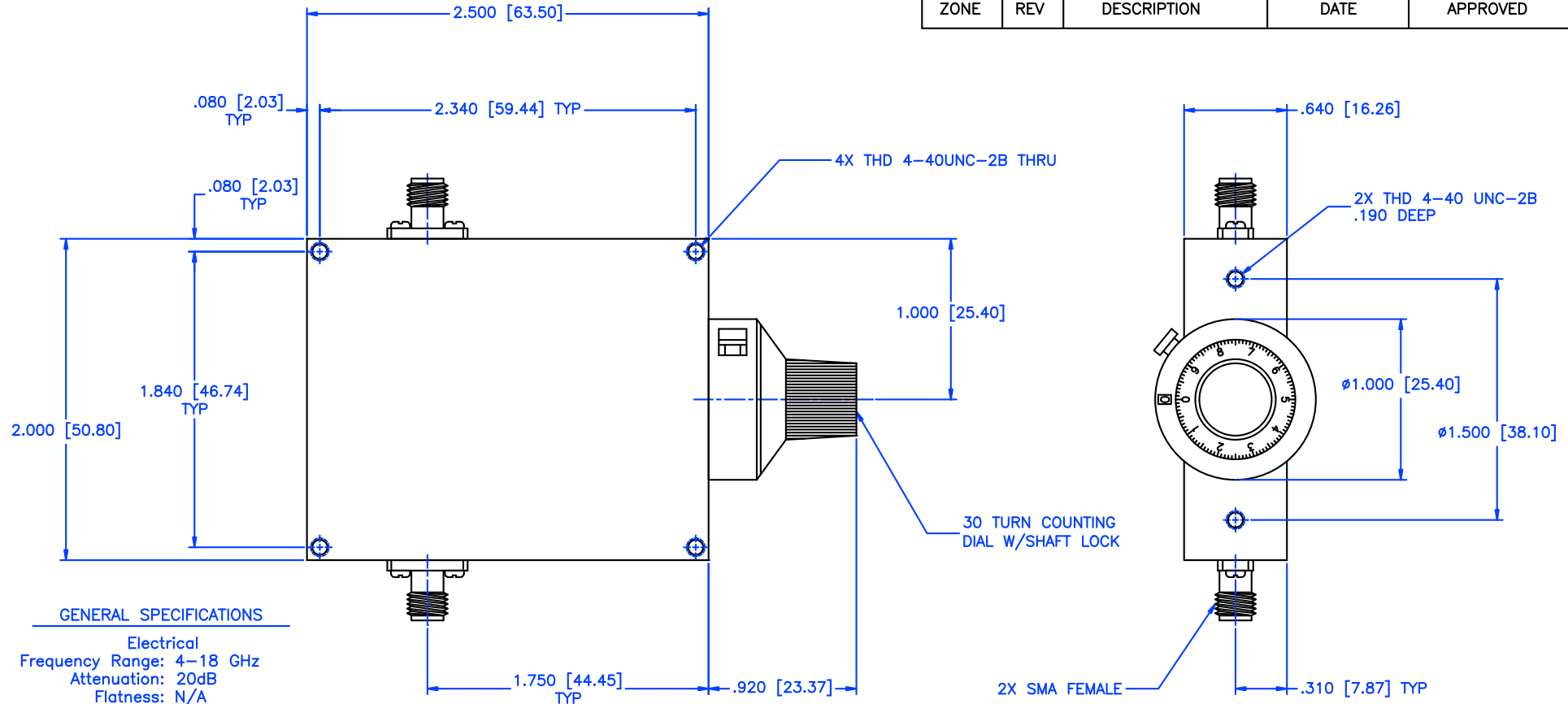


REVISIONS				
ZONE	REV	DESCRIPTION	DATE	APPROVED



**GENERAL SPECIFICATIONS**

**Electrical**  
 Frequency Range: 4-18 GHz  
 Attenuation: 20dB  
 Flatness: N/A  
 VSWR: 1.50:1 Max.  
 Insertion Loss per Frequency Band  
 to 18 GHz: 0.5dB max.  
 to 26 GHz: 0.75dB max.  
 to 40 GHz: 1.50dB max.  
 RF Power: 7W average, 3kW peak

**Mechanical**  
 Body: Aluminum  
 Connectors: Stainless Steel  
 Finish: Unique corrosion resistant 316 stainless steel epoxy coating IAW MIL-F-14072  
 Weight: 5.2oz / 150gm

**Environmental**  
 Operating Temperature: -55°C to +110 °C  
 Shock: 15 G's, 11ms, 1/2 sine  
 Vibration: 3 G's overall  
 Altitude: 40,000ft. Survival 25,000ft Operating

MATERIAL:			MICROWAVE COMMUNICATIONS LABORATORIES INC. 7255 30TH AVE. N. SAINT PETERSBURG, FL 33710 TEL: (727) 344-6254 FAX: (727) 381-6116 http://WWW.MCLI.COM		SCALE:	N/A	
			UNLESS OTHERWISE SPECIFIED: TOLERANCES IN (INCHES) OR [mm] (MILLIMETERS) FRACTIONS: ± 1/64 DECIMALS: ±.01 ±.005 ANGLE: ±1/2°	DRAWING TITLE:		CONTINUOUSLY VARIABLE ATTENUATOR WITH DIAL	
DRAWN:		DATE:		PART NO.			
Paiboon Luekhamhan		02-09-2011		CA26-20/D			
APPROVED:		DATE:		CAGE CODE:	SIZE:	REV:	DWG NO.
T. Nguyen		02-09-2011		OD2L5	A	N/A	82976
		PROPRIETARY NOTICE: THE INFORMATION IN THIS DRAWING IS PROPRIETARY AND SHALL NOT BE USED OR DISCLOSED WITHOUT WRITTEN PERMISSION FROM MICROWAVE COMMUNICATIONS LABORATORIES INC. (MCLI)		DO NOT SCALE THE DRAWING			
		THIRD ANGLE PROJECTION					