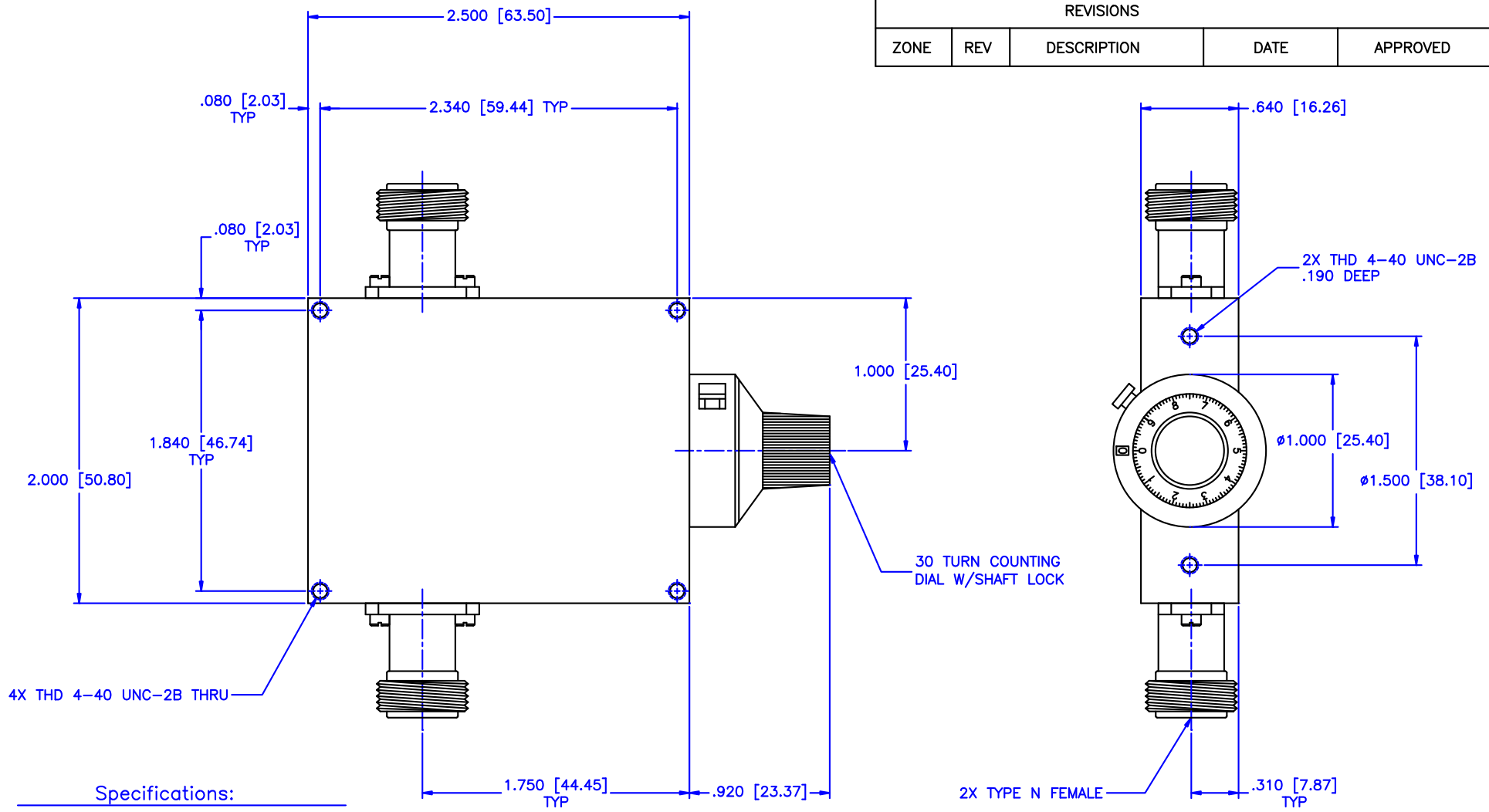


REVISIONS				
ZONE	REV	DESCRIPTION	DATE	APPROVED



Specifications:
 Frequency Range: 4–18 GHz
 Attenuation: 20dB
 Insertion Loss: 0.5 Max.
 VSWR: 1.50:1
 RF Power: 7W Average, 3kW Peak

Environmental:
 Temperature range: -55°C to +110°C
 Shock: 15 G's, 11mS, 1/2 sine
 Vibration: 3 G's overall
 Altitude: 40,000 ft. Survival 25,000ft Operating

MATERIAL:			MICROWAVE COMMUNICATIONS LABORATORIES INC. 7255 30TH AVE. N. SAINT PETERSBURG, FL 33710 TEL: (727) 344-6254 FAX: (727) 381-6116 http://WWW.MCLI.COM		SCALE:	N/A
UNLESS OTHERWISE SPECIFIED: TOLERANCES IN (INCHES) OR [mm] (MILLIMETERS) FRACTIONS: ± 1/64 DECIMALS: ±.01 ±.005 ANGLE: ±1/2°			DRAWING TITLE:		SHEET:	
DRAWN: Paiboon Luekhamhan		DATE: 02-08-2011		CONTINUOUSLY VARIABLE ATTENUATOR WITH DIAL		
APPROVED: T. Nguyen		DATE: 02-08-2011		PART NO. CVA21-20/DNF		
THIRD ANGLE PROJECTION		CAGE CODE: 0D2L5		SIZE: A	REV: N/A	DWG NO. 85424
		DO NOT SCALE THE DRAWING				