

Passband 1: DC to 950 MHz

Diplexer (LP/HP)

Passband 1 Isolation: 50 dB

Passband 2: 1400 to 5000 MHz

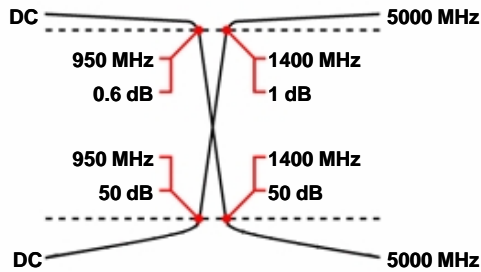
WDK6+5-DC-950/1400-5000-50S3

Passband 2 Isolation: 50 dB

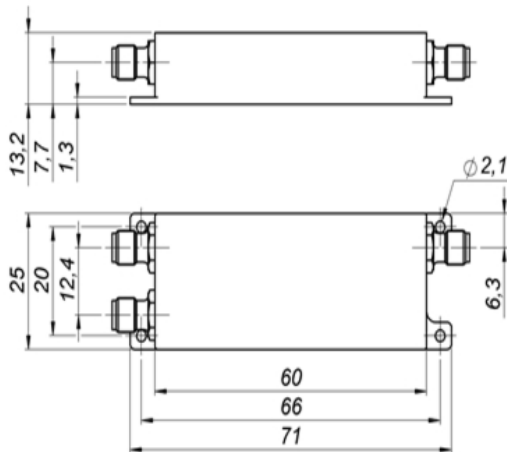
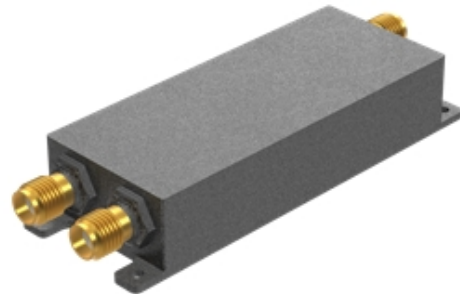
Specifications

	Band 1 (Lowpass)	Band 2 (Highpass)
Passbands:	DC to 950 MHz	1400 to 5000 MHz
Passband Insertion Loss:	0.6 dB max.	1 dB max.
Passband Return Loss:	17 dB min.	15 dB min.
Stopbands:	1400-5000 MHz	DC-950 MHz
Stopband Attenuation:	50 dB min.	50 dB min.
Operating Temperature:	15 °C to 45 °C	
Power Handling:	max. 10 W CW into a 2:1 VSWR (Please see our warranty in this regard)	
Dimensions (L x W x H):	60 x 25 x 13.2 mm (plus connectors and flanges)	
Approx. Weight:	0.1 kg	
Mounting Provision:	5.5 mm flanges on both ends	
Connector Common:	SMA Female	
Connector Band 1:	SMA Female	
Connector Band 2:	SMA Female	

Typical Performance



6+5 Section LC Design



©2015 Wainwright Instruments. All rights reserved.

Euro Prices

(USD Prices will be quoted for US-based customers only)

1 - 4 pcs:	€ 761
5 - 9 pcs:	€ 685
10 - 24 pcs:	€ 616

Delivery Terms

FCA Andechs (free carrier) according to **Incoterms 2010**
 In Deutschland liefern wir frachtfrei gemäß CPT **Incoterms 2010** (unversichert).
 Regarding payment terms and warranty see [Terms and Conditions](#).
Delivery time: normally 3 to 4 weeks - depending on quantity ordered and on our work load.

Customer is responsible for observing all applicable export laws in regard to filter application and location of end user



Wainwright Instruments GmbH
 www.wainwright-filters.com

Tel: +49 8152 918230
 Fax: +49 8152 918255
 info@wainwright-filters.com