

Coaxial Bandpass Filter

ZFBP-70+

50Ω 69 to 71 MHz



CASE STYLE: H16

Maximum Ratings

Operating Temperature	-40°C to 85°C
Storage Temperature	-55°C to 100°C
RF Power Input	0.5W at 25°C

Permanent damage may occur if any of these limits are exceeded.

Features

- Good VSWR, 1.25:1 Typ @ Passband
- Excellent Rejection in the Stopband

Connectors	Model	Price	Qty.
SMA-FEMALE	ZFBP-70-S+	\$64.95 ea.	(1-9)
BRACKET (OPTION "B")		\$5.00 ea.	(1+)

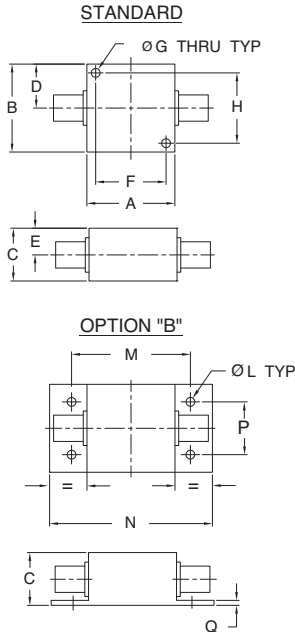
Applications

- IF Signal Processing
- High Rejection Application
- Wire-Line Broadband Access
- Lab Use

+RoHS Compliant

The +Suffix identifies RoHS Compliance. See our web site for RoHS Compliance methodologies and qualifications

Outline Drawing



Outline Dimensions (inch/mm)

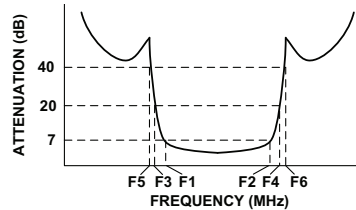
A	B	C	D	E	F	G
1.25	1.25	.75	.63	.38	1.000	.125
31.75	31.75	19.05	16.00	9.65	25.40	3.18

H	L	M	N	P	Q	wt.
1.000	.125	1.688	2.18	.75	.06	grams
25.40	3.18	42.88	55.37	19.05	1.52	70

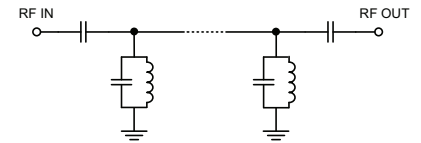
Bandpass Filter Electrical Specifications (T_{AMB} = 25°C)

CENTER FREQ. (MHz)	PASSBAND (MHz) (Loss < 7dB) F1 - F2	STOPBANDS (MHz)				VSWR (:1)	
		Loss > 20dB		Loss > 40dB		Passband Max.	Stopband Typ.
		F3	F4	F5	F6		
70	69 - 71	66	75	64	78 - 1000	1.35	18

Typical Frequency Response

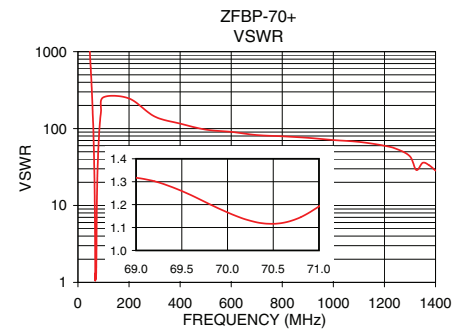
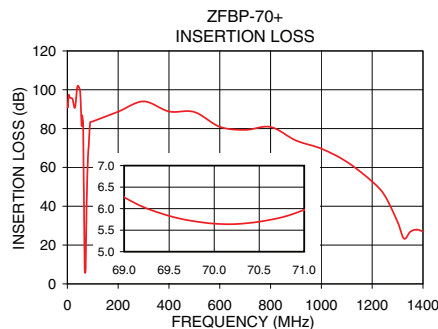


Functional Schematic



Typical Performance Data at 25°C

Frequency (MHz)	Insertion Loss (dB)	VSWR (:1)
0.5	90.82	3501.66
5.0	97.22	2322.94
30.0	90.79	4431.70
50.0	99.47	614.61
62.0	82.86	59.74
64.0	56.94	29.61
66.0	33.57	9.80
66.5	26.89	6.41
67.0	19.89	3.71
68.0	9.14	1.06
69.0	6.26	1.32
70.0	5.65	1.17
71.0	5.97	1.19
72.4	9.77	2.32
74.0	25.39	9.47
76.0	41.61	22.55
78.0	52.97	38.72
100.0	83.70	255.36
500.0	88.51	96.95
1000.0	69.65	70.88
1400.0	26.99	28.37



For detailed performance specs & shopping online see web site

P.O. Box 350166, Brooklyn, New York 11235-0003 (718) 934-4500 Fax (718) 332-4661 The Design Engineers Search Engine Provides ACTUAL Data Instantly at minicircuits.com

Notes: 1. Performance and quality attributes and conditions not expressly stated in this specification sheet are intended to be excluded and do not form a part of this specification sheet. 2. Electrical specifications and performance data contained herein are based on Mini-Circuit's applicable established test performance criteria and measurement instructions. 3. The parts covered by this specification sheet are subject to Mini-Circuits standard limited warranty and terms and conditions (collectively, "Standard Terms"); Purchasers of this part are entitled to the rights and benefits contained therein. For a full statement of the Standard Terms and the exclusive rights and remedies thereunder, please visit Mini-Circuits' website at www.minicircuits.com/MCLStore/terms.jsp.

REV. OR
M107815
EDR-8017AU
ZFBP-70+
URJ/RAV
121017
Page 1 of 1