

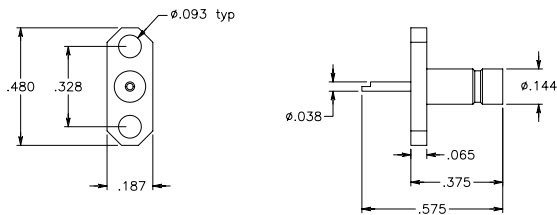
SMB CONNECTORS



*Add "BN" as a prefix to P/N to order Brass/Nickel.
 *Add "NC" as a prefix to P/N to order W/Out Captivation.

SMB

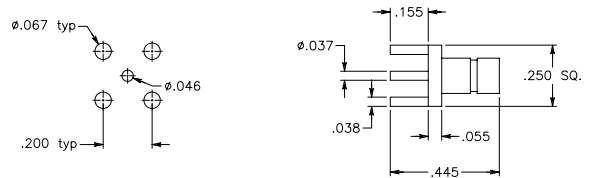
(SMB Jack) 2-Hole Flange Mount Solder Cup Contact



PART #
SMB 6000-1001

Captive Contact

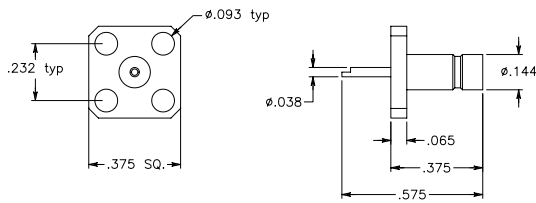
(SMB Jack) Printed Circuit Mount



PART #
SMB 6000-1004

Captive Contact

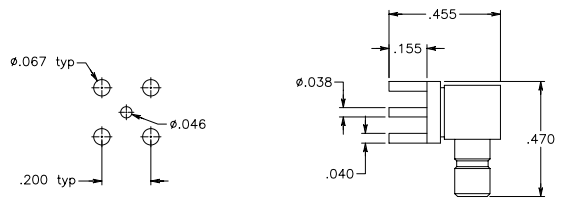
(SMB Jack) 4-Hole Flange Mount Solder Cup Contact



PART #
SMB 6000-1002

Captive Contact

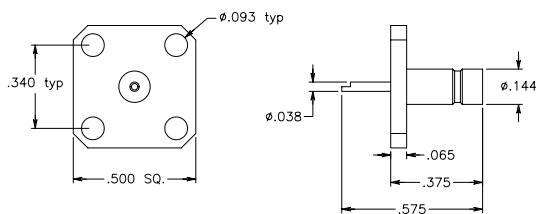
(SMB Jack) Right Angle Printed Circuit Mount



PART #
SMB 6000-1005

Captive Contact

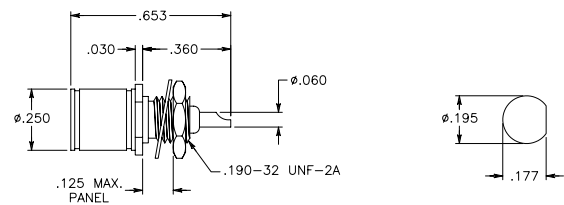
(SMB Jack) 4-Hole Flange Mount Solder Cup Contact



PART #
SMB 6000-1003

Captive Contact

(SMB Plug) Bulk Head Receptacle Front Mount Solder Cup Terminal



PART #
SMB 6000-1006

Captive Contact

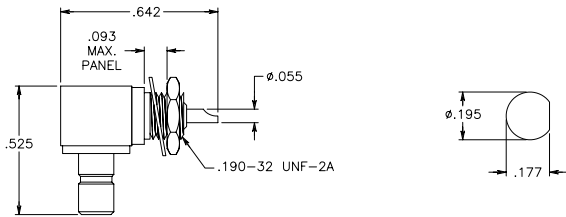
SMB CONNECTORS



*Add "BN" as a prefix to P/N to order Brass/Nickel.
 *Add "NC" as a prefix to P/N to order W/Out Captivation.

SMB

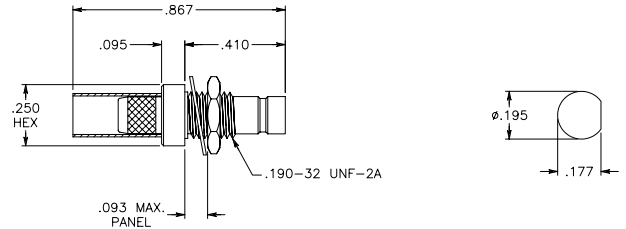
(SMB Jack)
Front Angle Bulk Head Receptacle
Front Mount Solder Cup Terminal



PART #
SMB 6000-1007

Captive Contact

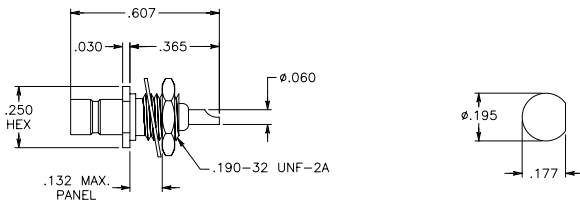
(SMB Jack)
Bulk Head Crimp Attachment
For RG174, RG188 & RG316



PART #
SMB 6000-1010

Captive Contact

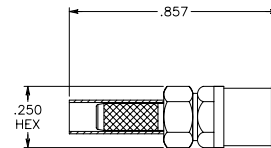
(SMB Jack)
Bulk Head Receptacle
Front Mount Solder Cup Terminal



PART #
SMB 6000-1008

Captive Contact

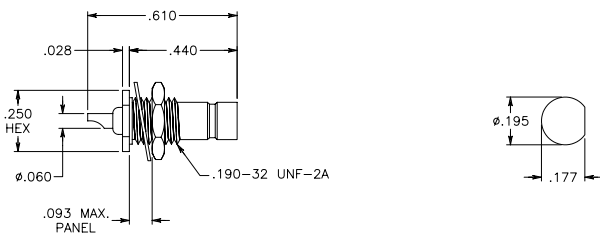
(SMB Plug)
Crimp Attachment
For RG178 & RG196



PART #
SMB 6000-1011

Captive Contact

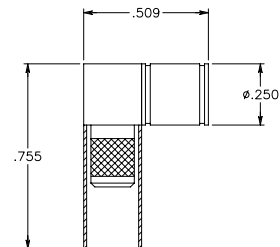
(SMB Jack)
Bulk Head Receptacle
Rear Mount Solder Cup Terminal



PART #
SMB 6000-1009

Captive Contact

(SMB Plug)
Right Angle Crimp Attachment
For RG55, RG142, RG223 & RG400



PART #
SMB 6000-1012

Captive Contact