

Features

- Frequency Range: 1~100MHz
- Gain: 28dB(typ)
- IP3(out): 30dBm(typ)
- P-1: 17dBm
- Standard Hermetic Package TO-8F

Electrical (50 Ω, V_{CC}=+15V, T_A=-55°C~+85°C)

Parameter	Symbol	Unit	Guaranteed	Typical
Frequency Range	f _L ~f _H	MHz	1~100	--
Gain	G _p	dB	≥27.0	28.0
Gain Flatness	Δ G _p	dB	≤1.0	0.4
Noise Figure	F _n	dB	≤2.5 Δ	2.2
Input VSWR	VSWR _i	--	≤2.0:1	1.5:1
Output VSWR	VSWR _o	--	≤2.0:1	1.5:1
For 1dB Compression	P-1	dBm	≥16.0* Δ	17.0
Supply Current	I _{CC}	mA	--	32

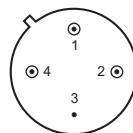
Note: 1)When V_{CC}=12V, Gain will decrease 0.4dB, P-1 will decrease 2.8dB, Current is 26mA(typ).
 2) "*" f=50 MHz. "Δ" T_A=24±1°C.

Maximum Ratings

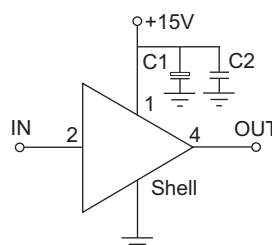
Power supply: +17V_{DC}
 RF input: +7dBm
 Storage Temp: +125°C

Application Notes

1. Interface schematic shown as right, C₁=3.3~22 μ F, C₂=1000~3300pF.
2. Connectorized package (SMA-2) available.
3. See assembly section for outline and mounting information.



TO-8F



Typical Curves

