

Passband 1: DC to 1880 MHz

Diplexer (LP/HP)

Passband 1 Isolation: 50 dB

Passband 2: 2300 to 3000 MHz

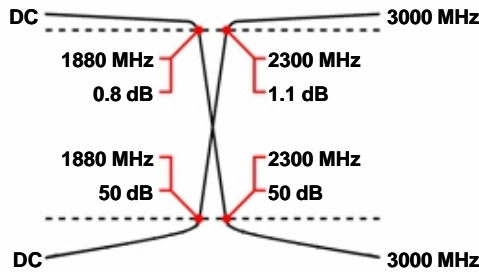
WDK8+8-DC-1880/2300-3000-50E3

Passband 2 Isolation: 50 dB

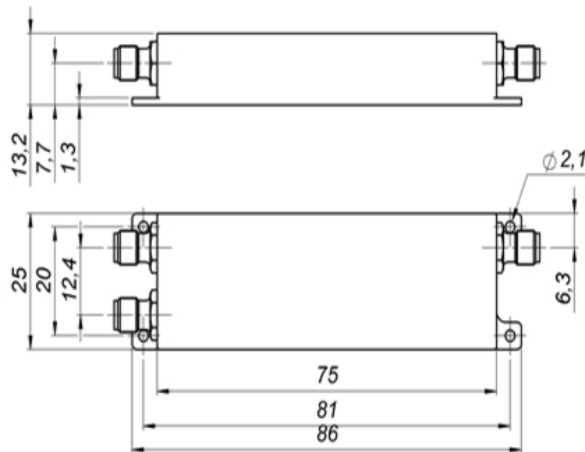
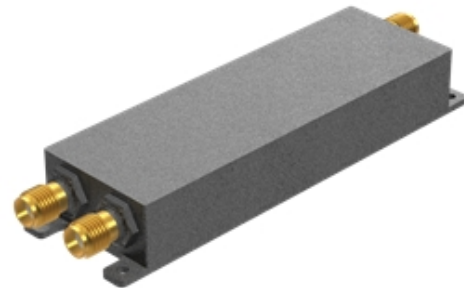
Specifications

	Band 1 (Lowpass)	Band 2 (Highpass)
Passbands:	DC to 1880 MHz	2300 to 3000 MHz
Passband Insertion Loss:	0.8 dB max.	1.1 dB max.
Passband Return Loss:	14 dB min.	14 dB min.
Stopbands:	2300-3000 MHz	DC-1880 MHz
Stopband Attenuation:	50 dB min.	50 dB min.
Operating Temperature:	15 °C to 45 °C	
Power Handling:	max. 10 W CW into a 2:1 VSWR (Please see our warranty in this regard)	
Dimensions (L x W x H):	75 x 25 x 13.2 mm (plus connectors and flanges)	
Approx. Weight:	0.1 kg	
Mounting Provision:	5.5 mm flanges on both ends	
Connector Common:	N Female	
Connector Band 1:	N Female	
Connector Band 2:	N Female	

Typical Performance



8+8 Section LC Design



©2015 Wainwright Instruments. All rights reserved.

Euro Prices

(USD Prices will be quoted for US-based customers only)

1 - 4 pcs:	€ 895
5 - 9 pcs:	€ 806
10 - 24 pcs:	€ 725

Delivery Terms

FCA Anechts (free carrier) according to **Incoterms 2010**
 In Deutschland liefern wir frachtfrei gemäß CPT **Incoterms 2010** (unversichert).
 Regarding payment terms and warranty see [Terms and Conditions](#).
Delivery time: normally 3 to 4 weeks - depending on quantity ordered and on our work load.

Customer is responsible for observing all applicable export laws in regard to filter application and location of end user



Wainwright Instruments GmbH
 www.wainwright-filters.com

Tel: +49 8152 918230
 Fax: +49 8152 918255
 info@wainwright-filters.com