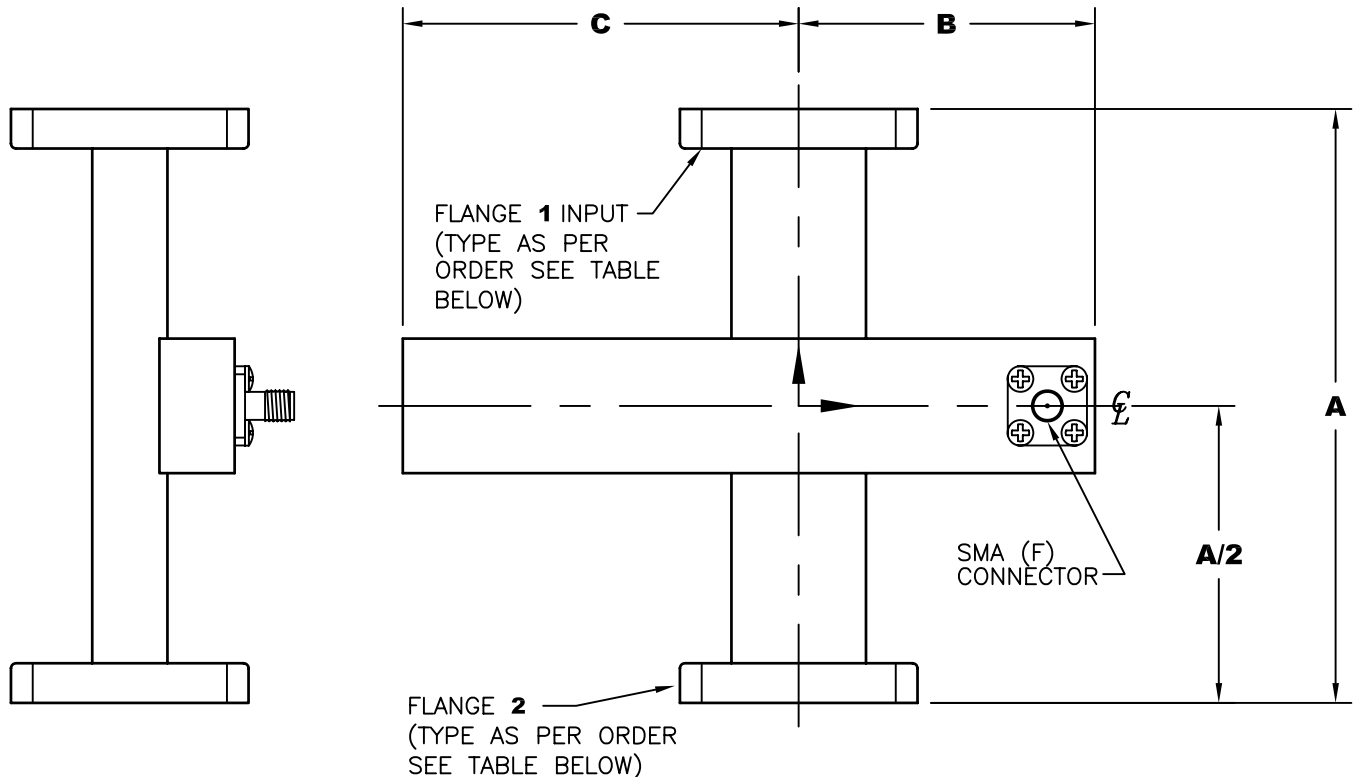


REV. A	DATE 4/30/01	INITIAL RELEASE
B	5/7/03	UPDATED NOTES
C	2/27/04	28-303 DIM C 2.50 WAS 1.50
D	2/08/06	UPDATED FLANGE TYPE 8 WAS: 8=SPEC
E	02/01/11	ADDED PRESSURE TEST OPTION (/PT) $\Delta$



MODEL NO.= WG SIZE - 302/303\* - MATERIAL (A/B)\*\* - COUPLING (dB) - FLG. 1 - FLG. 2/OPTION\*\*\*  
EXAMPLE: 75-303A-30-6-6

\*302=TYPE-N, 303=SMA

\*\*A=ALUMINUM

B=BRASS

\*\*\*10psi PRESSURE TEST=/PT  $\Delta$

MODEL NO.	FREQUENCY (GHz)	DIM. A	DIM. B	DIM. C
430-303	1.75-2.60	7.50	5.00	8.00
284-303	2.60-3.95	7.50	3.75	5.00
229-303	3.30-4.90	7.00	3.50	4.75
187-303	3.95-5.85	6.50	3.25	4.50
159-303	4.90-7.05	6.00	3.00	4.00
137-303	5.95-8.20	6.00	3.00	4.00
112-303	7.05-10.0	4.20	2.10	3.00
90-303	8.20-12.4	4.00	2.00	2.75
75-303	10.0-15.0	3.75	1.87	2.50
62-303	12.4-18.0	3.50	1.75	2.37
51-303	15.0-22.0	3.10	1.50	2.25
42-303	18.0-26.5	2.20	1.10	1.50
34-303	22.0-33.0	2.20	1.10	1.50
28-303	26.5-40.0	2.00	1.00	2.50

#### PERFORMANCE SPECIFICATIONS

VSWR PRIMARY: 1.05 MAX.  
VSWR SECONDARY (COAX): 1.25 MAX.  
NOMINAL COUPLING:  $\pm 0.50$  MAX.  
FREQ. SENSITIVITY:  $\pm 1.00$  dB MAX.  
DIRECTIVITY: 20dB MIN.

FLANGE TYPE
1 = CPRG
2 = CPRF
3 = CMR STANDARD
4 = CMR CLEAR
5 = CMR TAP
6 = UG COVER
7 = UG CHOKE
8 = COVER-GROOVE
9 = PDR
10 = UDR

MATERIAL	ALUMINUM/BRASS	TREATMENT	IRIDITE	DRAWN	R. LYNCH	DATE	5/14/01
FINISH	ATM STD. GRAY	MOD NO.	XXX-302/303-XX-X-X	CHECKED		DATE	
2 PORT CROSSGUIDE DIRECTIONAL COUPLER OUTLINE				APPROVED		DATE	
ADVANCED TECHNICAL MATERIALS, INC. 49 RIDER AVE., PATCHOGUE N.Y. 11772 TEL: (631) 289-0363 FAX: (631) 289-0358 http://www.atmmicrowave.com				UNLESS OTHERWISE NOTED DIMENSIONS ARE IN INCHES TOLERANCES ARE:		FRACTIONS $\pm 1/64$ DECIMALS $\pm .01$ ANGLES $\pm 1/2^\circ$ SHEET. 1/1	
						SCALE N.T.S. DWG. NO. 4293 REV. E	